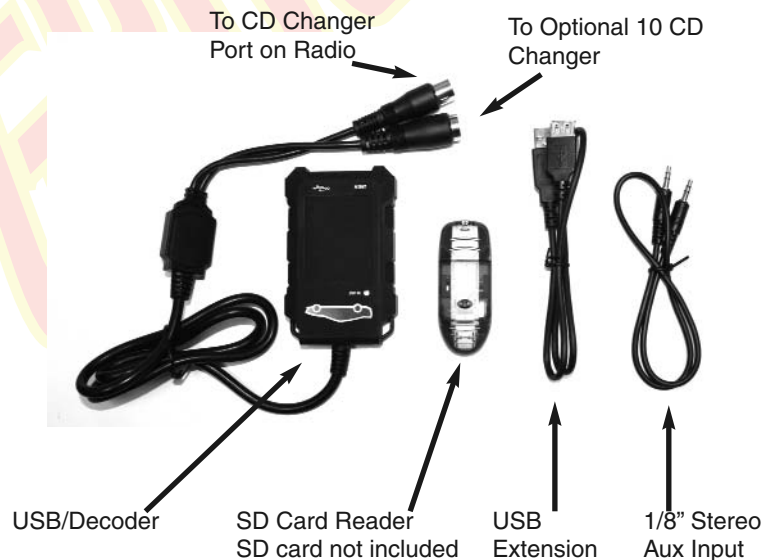


## Auxiliary Input

If you have a cable plugged into the 1/8" stereo plug, the USB player will stop playing songs from the USB storage device and switch to the audio input on the stereo plug. To resume playing the USB player unplug the 1/8" stereo plug from the USB adapter.



Custom Autosound Mfg., Inc.  
1030 W. Williamson Ave.  
Fullerton, CA 92833  
(714) 773-1423 (800) 888-8637  
[www.custom-autosound.com](http://www.custom-autosound.com)



# CAM-USBFLASH USB Interface

for  
Custom Autosound  
Concours  
Radio models USA-5, USA-6,  
USA-66 and Secretaudio

CONNECTS TO: 8-PIN DIN AT HEADUNIT

COMPATIBLE WITH: USB Flash Drives



## CAM-USBFLASH Features:

**Direct connection (dock connector) with CD-quality sound**

**Power on automatic play function**

**Allows use of the radio CD controls to change songs/playlist**

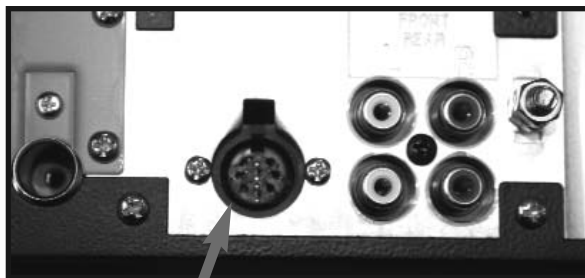
**1/8" stereo jack for other auxiliary input**

This adapter will give you the best possible sound from your USB while playing through your car stereo. Simply plug the CAM-USBFLASH into the CD changer port of your Custom Autosound USA-5, USA-6, USA-66 or Secretaudio and plug in your USB memory drive (thumb drive, flash drives, jump drives, USB keys, etc.) Song selection is made with the CD control buttons on your Custom Autosound radio and includes playlist selection and random song selection. The CAM-USBFLASH can be used with or without the Custom Autosound 10 CD changer. If your flash drive is not connected the CAM-USBFLASH can still be used to input audio from an external device (satellite radio, portable CD, etc.) via the 1/8" stereo plug.

## Installation:

**Turn your radio off before making these connections.**

**Plug the CAM-USBFLASH into the 8 PIN DIN plug on the back of your radio.**



8 PIN DIN Connector on back of Radio

Route the dock connector to a suitable place in your vehicle. (Glove Box, Console etc.) Plug in your memory.

Included with your USB player is an SD card reader SD card not included. You will need to buy an SD card for this reader or use any USB flash drive.

Insert your flash memory into the USB port on the interface.

Turn on your radio and press the CD button (Function button on USA-66).

Do not unplug your flash memory while the light on adapter is on. To remove memory switch radio to AM/FM tuner and wait 5 seconds. Unplugging memory while it is still active could cause file damage.

## Switching between 10 disc changer and USB player

**USA-5, USA-6** radios - If CD changer is playing after pressing the CD button press CD button 3 times this will switch to the USB. Pressing CD button 3 times again will switch back to the CD changer

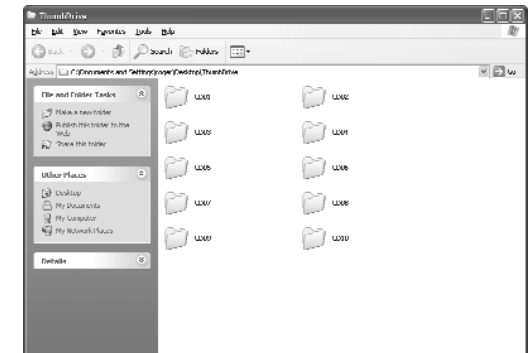
**Secretaudio** radio - If CD changer is playing after pressing the CD button press Band Then CD again to play the USB player. Repeat this sequence to go back to CD changer.

**USA-66 Mustang** radio - If CD changer is playing after pressing the Function button press the Function button 4 times rapidly to switch to the USB player. Repeat this sequence again to go back to CD changer.

The USB player will begin to play songs from the designated folders on the drive. If the USB memory device is not attached or if the proper folder structure (detailed below) is not present, the display may flash "NO DISC" or display track 88 disc 6 and song time may continue to display.

## Setting up your USB drive:

Songs must be placed in designated folders on the flash drive. The folders must be named CD01, CD02....up to CD10. The CAM-USBFLASH will recognize up to 99 songs in each folder.



When the flash drive is plugged into the CAM-USBFLASH each of these folders is recognized as a "disc" - meaning it starts in the CD01 folder, and if you press disc up or disc down it will change to the other folders. You may change tracks by using the seek up/down tuning control on your radio or Track Up Track Down on your USA-66 Mustang radio.

USA-5, USA-6 Display - Secretaudio does not show time



The random button can be used to play songs from a folder in a random order. If you are in random mode and would like to switch to another random song use the up/down tuning knob or Track up Down on the radio.