

Direction and Suggestions for Installing 1967,68,69 Camaro Trunk Panel Kit



Please Note:

Based on your particular car, you may find it necessary to custom-trim here and there, depending upon the type of material you choose to cover the trunk kit panels, how much foam you add or how you decide to custom finish your panels. If you find it necessary, a quick trim adjustment using an electric sander with 80 grit paper or a rasp file is all that will be required.

For some installations, it will be necessary to remove the spare tire hold down brackets using a cutoff wheel.

A typical stock trunk area is on most sedans and hardtops. This is where the installation process is the same, regardless. Trim sanding is all that will be needed. For convertible, it will be necessary to trim the panels.



This is the bottom floor panel for the 67,68,69 Camaro. I suggest that a 5" piece of trunk carpeting material is put down first and glued across the bottom back of the trunk, near the gas filler, this is only a suggestion, then put the panel down as directed. This panel is big and needs to be placed in the trunk right side first. Set the panel on the floor of the trunk then slide it back toward the gas filler tube. The tail light wires should be moved out of the way or wire tied up in order to seat the panel properly in the trunk. The space under the trunk panel floor will need some support, so use a 2X4 approximately 24" long. Place the board on edge in the middle of the trunk in order to stiffen the center of the floor panel. The 2X4 can also be screwed into the floor panel if desired for more rigidity.



The Camaro trunk ready for the trunk panels.



The Camaro trunk has a point of difference around the gas filler tube that must be noted. It is offset and when installing this look carefully at the cutout



Notice how the offset is off to the right side of the panel.



The corners fit around wheel well with enough room for carpeting.

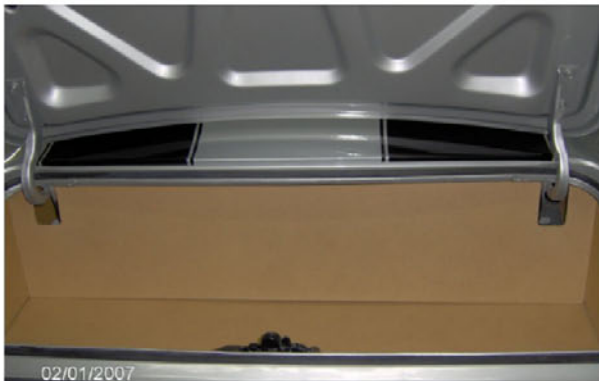
These are the next panels to go into the trunk. Put the left side in by matching the notch with the metal lip on the bottom of the wheel well tub. Be careful not to break the panel by forcing the piece into place. Start by sliding the front of the panel all the way under the fender then slide the notch into place. Slide in the back with the cut out for the tail light into place. On 1969's, you can wedge the panel under the bulb plug to hold it in place to test for size. The panel should sit on top of the floor panel on both sides.



The left panel is the first one in place. The rear cutout should be pulled back enough to fit against the tail light housing.



The right panel is next and should also be against the tail light housing.



The final piece is the rear panel. Carefully put the panel in tilted to the rear, bottom first and then move it up into place.

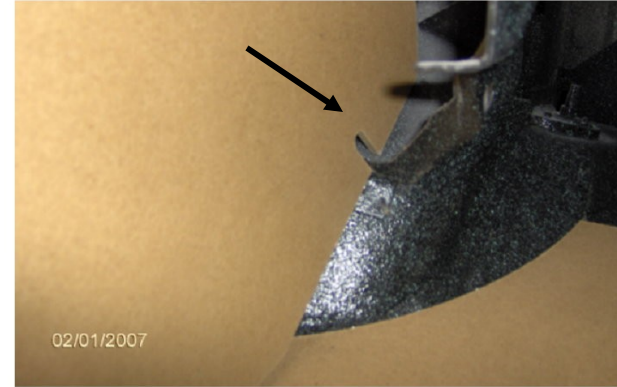


The panels will be snug once the upholstery and carpeting is put into place. You may need to sand them down if using thick material.

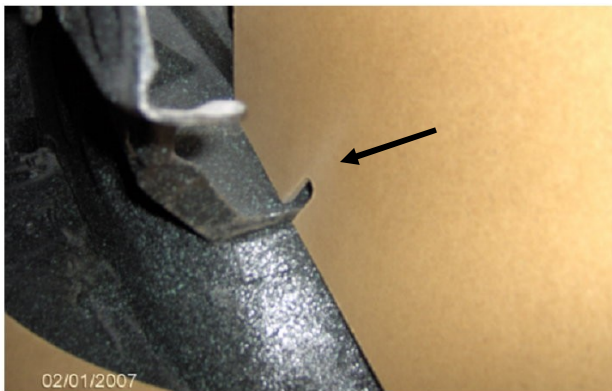
The last panel to go in is the back with the hinge cutouts.. Put it into the trunk by tilting the top toward the gas filler and then slide it up and into place. It may get tricky here trying to keep the sides in place and getting the back panel where it belongs. The panels fit much tighter with material on them and will not move once set into place



The right panel is in place. Pull the side panel up against the lip of the trunk for a good fit. The arrow indicates the lip where it should fit



The left panel has a notch in the front of it and it fits over a metal piece on the fender well. This needs to be exact for a good fit.



The right side pane lhas the same notch and should be fit the same as the left side, over the metal on the fender well.

The Camaro Kit contains four pieces, a floor, two sides, they are both the same for each side and a back panel. #317-4



Now Available for Most Chevy's
Trunk Panel Kits for Finishing and Trunk Upholstery

- Chevy 1955,56,57 Panel Kit No. 417-4
- Camaro 1967,68,69 Panel Kit No. 317-4
- Chevelle 1968-72 Panel Kit No. 517-4
- Chevy Impala 1962-64 Panel Kit No.917-4
- Nova 1968-72 Panel Kit No. 817-4

Save time and money using our trunk panel kits from

www.customtrunkpanels.com

