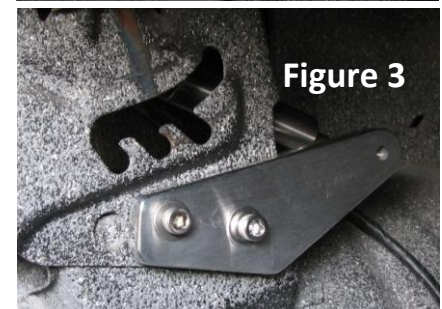
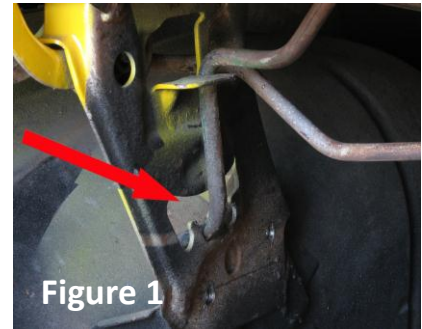




TRUNK HINGE INSTALLATION INSTRUCTIONS MS149-04 1966-67 NOVA

1. Before beginning the installation, take note of your trunk lid's fit and finish. Pay close attention to the width of the seams, alignment of the trunk lid to the fenders, etc. This will help in the final adjustment of the trunk lid. **NOTE: Do not attempt the installation alone. There are several steps in the installation process that require two people to complete safely.**
2. Mark the position of the stock hinges on the trunk lid and remove the four bolts holding it to the hinges. Remove the trunk lid and place it in a safe place.
3. Using a large screw driver or small bar, pry the bent end of the torsion rod away from the notches on the torsion rod bracket (figure 1- pictures may differ slightly). This will relieve the pressure on the trunk hinge. Do the same on both sides.
4. Rotate the bar until the opposite end can be removed from the hinge. The end of the bar at the hinge has a bend approximately 1 ½" long that is locked into the hinge. **NOTE: Once the spring tension is released, if you do not plan on saving the bars, you can cut them with a die grinder to ease removal.**
5. Locate the head of the hinge pin that holds the hinge into the torsion rod bracket between the outer edge of the bracket and the inside of the quarter panel. Use a Dremal or die grinder to grind off the head of the pin. **Use extreme caution to prevent damaging the outer body skin.**
6. Support the hinge while removing the pin by pulling it towards the center of the car.
7. Install the new billet trunk hinges. You can identify the correct hinge for each side of the car by noting that the ball stud on the hinge should face outward towards the fender.
8. Use the new stainless steel hinge pins supplied in the kit to fasten the hinges to the bracket. Slide the pins in from the center of the car. Secure them with the new C-clips.
9. From the center of the car, line the provided template up with the edge of the torsion rod bracket under the step of the hinge bracket (figure 2).
10. Using the enclosed template, locate and drill two 5/16 holes.
11. Using flat washers on each side of the strut bracket, attach it to the torsion rod bracket using the supplied stainless steel button head bolts and locknuts (figure 3).
12. Remove the retaining clips from the gas strut sockets and set them aside.
13. Snap the struts onto the ball studs with the body attached to the hinge and replace the strut retaining clips.
14. Reinstall the trunk lid, loosely attaching the hinge to the lid with the supplied stainless steel button head bolts and aluminum washers. Realign the trunk lid on the car as necessary using your markings as a guide. Once you are satisfied with the fit, securely tighten the fasteners.



EDDIE MOTORSPORTS IS NOT RESPONSIBLE FOR THE INSTALLATION OF HINGES ON APPLICATIONS OUTSIDE THE SPECIFIC YEAR AND MODEL OF THEIR INTENDED USE. CONTACT US WITH ANY QUESTIONS 888-813-1293

www.eddiemotorsports.com

