



## HDX-69C-CVL

Dakota Digital HDX Instrument Installation  
For 1969 Chevelle, Malibu and El Camino

Your new HDX-69C-CVL kit includes:

**HDX Display**



**Interconnect Harness**



**Universal Sender Pack**



**Installation Manuals**



**(9) 1/2" Screws**

**Blinker Harnesses (2)**



**Gear Indicator Lenses (2)**



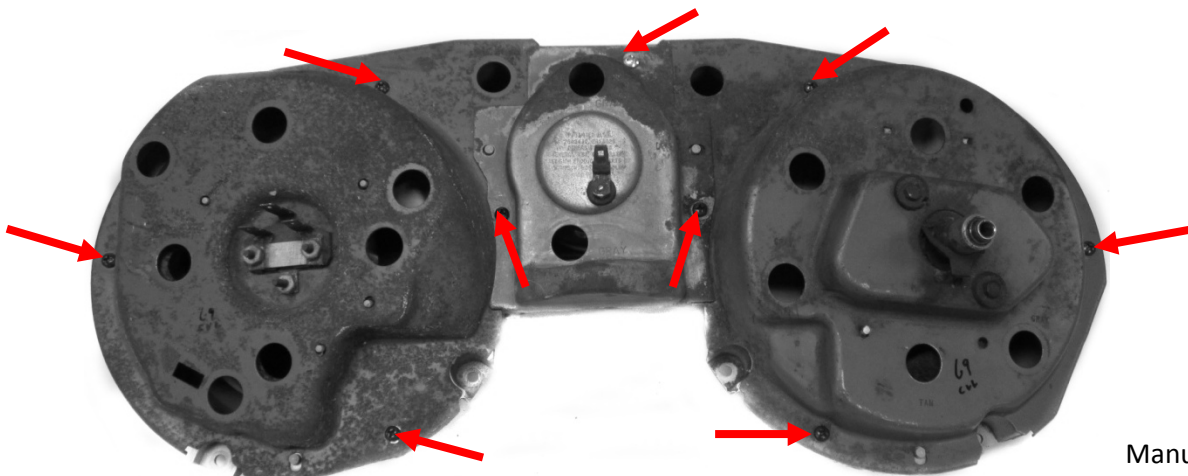
**Control Box**



**Main Harness**

## Installation

1. Remove the bezel from the dashboard, then, remove the instrument housing from the bezel by removing the nine screws shown below.



Manual # 650578A

2. Remove the stock lens using a pair of side cutters or a utility knife; the original lenses will not be reused. Using a small flathead screwdriver, remove the clock adjustment screw to allow lens to be lifted off of the housing (Fig. 2b.)

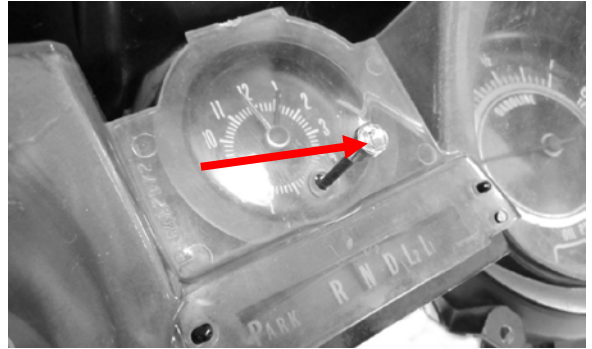
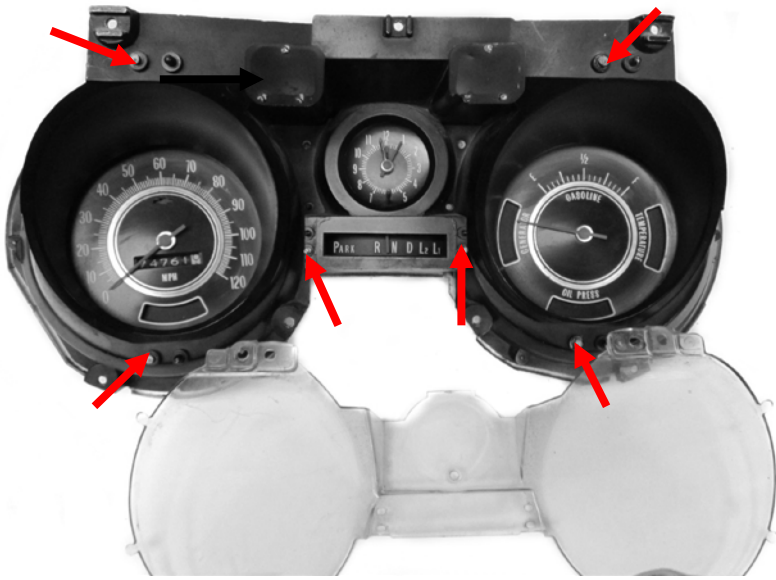
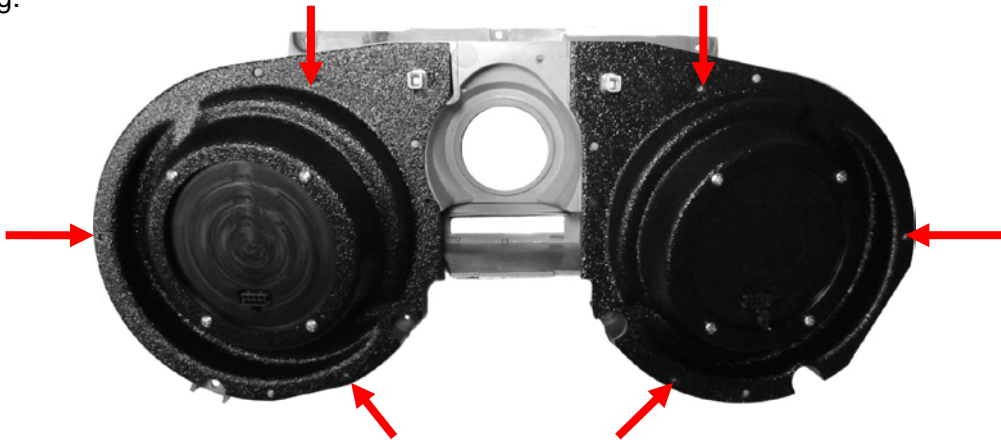
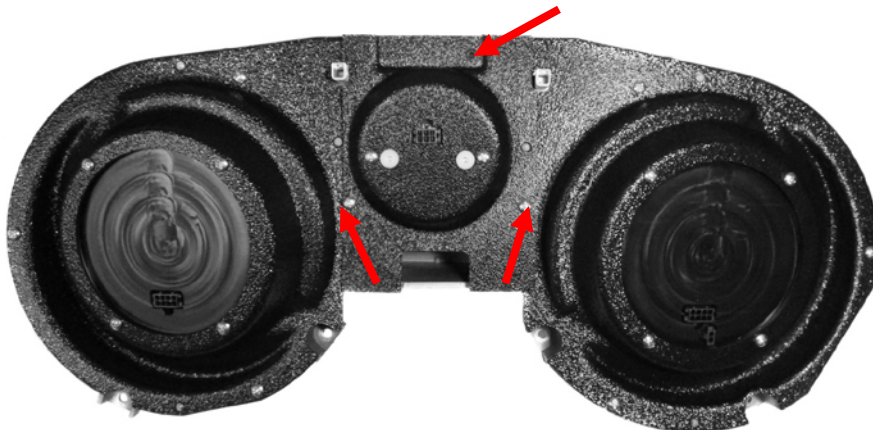


Fig. 2b

3. Using the provided screws; attach the Speed and Tach instrument panels to the stock instrument housing.

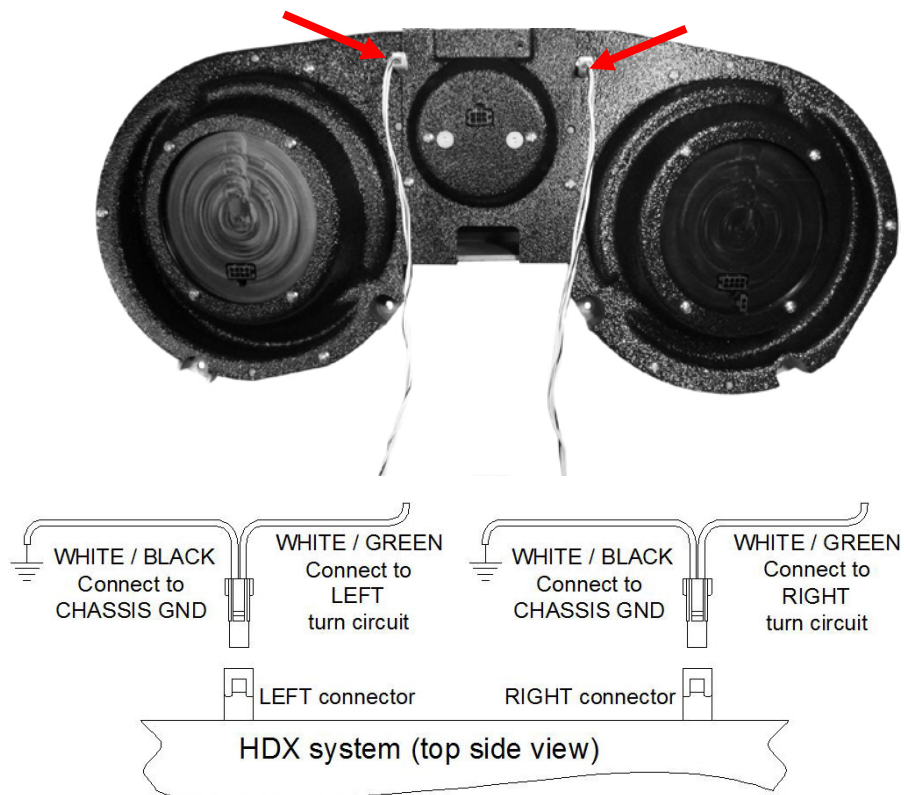


4. Install the Clock instrument panel between the Speed and Tach installed in Step 3, again using the provided screws.

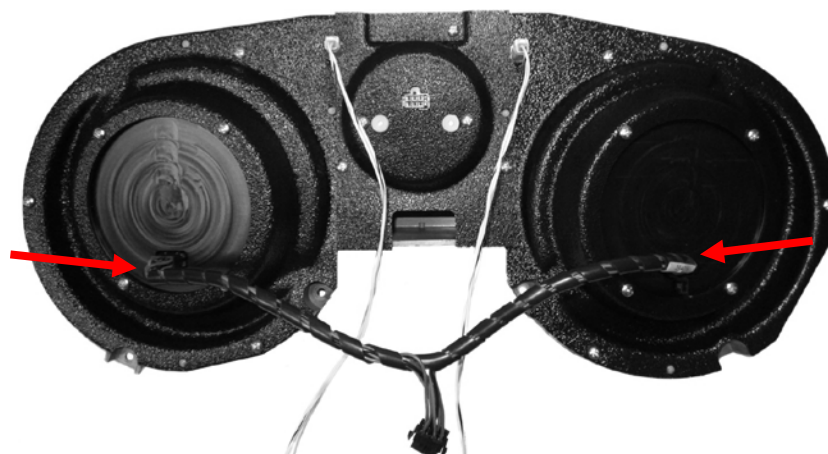


5. This system comes with the option to use two sets of turn signals in your dash: arrows located in the faceplate of your new HDX display, and arrows in your vehicle's stock turn signal locations. To use the new faceplate arrows, follow the wiring instructions for the turn signals found in the main HDX manual.

To optionally use the stock turn signal arrows, do not wire the turn signals to the HDX control box. Instead, use the two (2) provided two-wire harnesses. The harnesses plug directly into connectors on the back side of your new HDX system. Connect the wires from these harnesses to your turn signal circuits and ground as shown below. Doing this will light green LED bulbs, located in the original locations of your dash panel, when turn signals are active. Make sure to check left and right to verify they were wired correctly.



6. Connect the provided Interconnect Harness to the Speed and Tach.



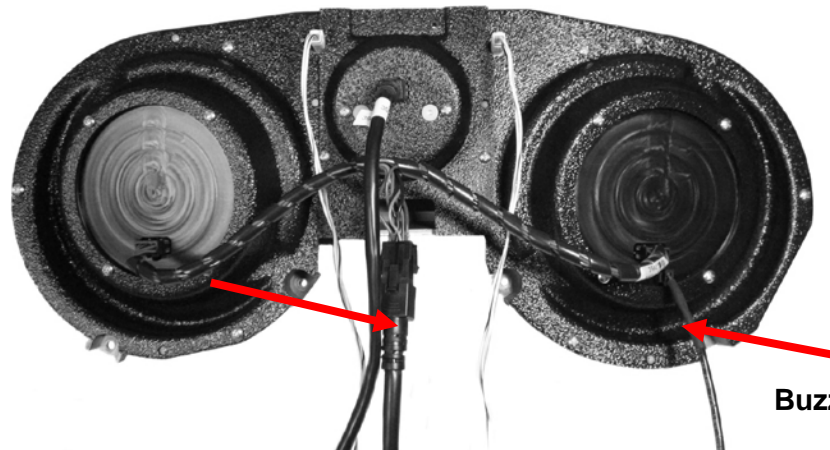


7. This instrument system allows the use of either the stock gear indicator or the GSS-2000 electronic gear indicator (sold separately) which will be displayed in the LCD message center.

Using RTV silicone, attach the provided clear lens (shown) for the stock indicator or the included block-off lens if using the GSS-2000.

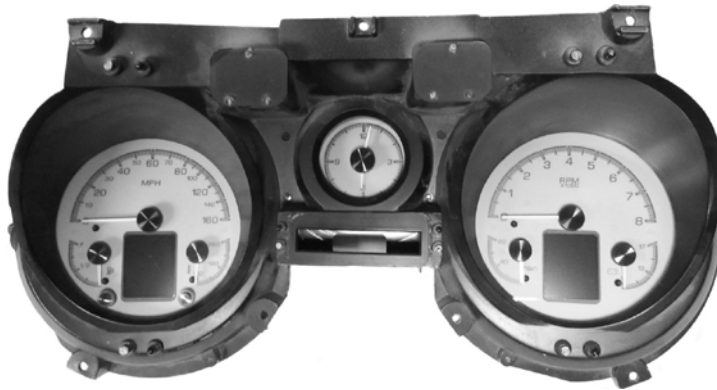


8. Connect the provided Main Harness and the Buzzer (optional for audio feedback) to the back of the HDX system.



**Buzzer Connector**

9. Re-install the cluster into the vehicle using the factory hardware and refer to the main manual for wiring instructions and manual 650569 for clock operations to complete the HDX installation.



**⚠ WARNING:** This product can expose you to chemicals including lead, which is known to the State of California to cause cancer and birth defects or other reproductive harm. For more information go to [www.P65Warnings.ca.gov](http://www.P65Warnings.ca.gov)



4510 W. 61st St. North  
Sioux Falls, SD 57107  
[www.dakotadigital.com](http://www.dakotadigital.com)

[dakotasupport@dakotadigital.com](mailto:dakotasupport@dakotadigital.com) Copyright 2011 - Dakota Digital, Inc.

Phone (605) 332-6513  
Fax (605) 339-4106