

SHIFTERS



THIS IS AN EXCLUSIVE GROUND UP PRODUCT

SHIFTKIT-350

BUY'N SAVE WITH KITS

Console Shifter Kit
Complete kit to convert to an automatic console shifter. Kit includes factory style staple shifter, cable, brackets, & all correct hardware.

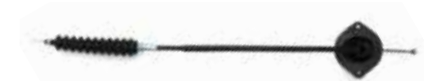
SHIFTKIT-350	1970-72 TH350.....	199.61 kit
SHIFTKIT-400	1970-72 TH400.....	203.86 kit



4 Speed Overdrive Kits

This kit makes it easy to install a modern overdrive automatic in place of your old Powerglide, TH350 or TH400 for improved performance and gas mileage. Each kit includes a new laser cut and hardened detent, indicator plate, hardware and brackets to allow the use of your factory shifter. This kit works with a TH700, TH200 or 4L60 transmission.

SC2242	1970 All.....	99.95 kit
SC2243	1971-72 All.....	99.95 kit



FTH-973R



Staple Shifter

Complete staple shifter assembly with chrome plated handle, spring loaded lock out trigger and mounting base. Ready to install.

ISSFT-1	1970-72 Shifter.....	139.99 ea.
ISH-3X	1970-72 Handle Only.....	79.99 ea.

No Volume Discount.



ISSFT-1

ISSFT-HRDW



Staple Shifter Repair Kit

All the hardware needed to bring a worn out staple shifter back to life.

ISSFT-HRDW	1970-72 ALL.....	32.99 kit
------------	------------------	-----------

No Volume Discount.

SW-DT3



Ratchet Shifter Detent

Converts your factory shifter to a ratchet type shifter. Simple installation.

SW-DT3	1970-72 Powerglide, TH350, TH400.....	95.95 ea.
SW-DT4	1970-72 700-R4, 200-4R, 4L60, 4L65, 4L80.....	95.95 ea.

Shifter Cables

Original GM or high quality reproduction shifter cables for floor mounted TH shifter.

FTH-973	1970-72 GM.....	94.95 ea.
FTH-973R	1970-72 Repro.....	28.95 ea.
FTH-88G	1982-88 G-body Shifter Cable.....	42.95 ea.



EBC-22

Shifter Cable Clip

Correct gold clip for mounting cable.

EBC-22	Mounting Clip.....	2.99 ea.
--------	--------------------	----------



FTH-049

Shifter Cable Mounting Clip

Correct push-on clip which mounts to shifter.

FTH-049	Push-on Clip (to shifter).....	7.99 ea.
---------	--------------------------------	----------

TRANSMISSION & RELATED



GForce Transmission Crossmembers

When you need extra exhaust clearance or just want to make your car handle better, these crossmembers are for you!

FCM-RCAE	1970-72 Coupe TH200R4, Muncie, TH350, TH400 Short Tail	275.99 ea.
FCM-RCAE-4	1970-72 Coupe 4L80E, 4L85E	275.99 ea.
FCM-RCG-350	1978-88 TH350	235.99 ea.
FCM-RCG-400K	1978-83 TH200R4 TH400 Short Tail.....	275.99 ea.
FCM-RCG-400	1984-88 TH200R4 TH400 Short Tail.....	235.99 ea.
FCM-RCG-700	1978-88 TH700R4 4L60E	235.99 ea.
FCM-RCG-4L80K	1978-83 4L60E 6L80E	335.99 ea.
FCM-RCG-4L80	1984-88 4L60E 6L80E	290.99 ea.
FCM-RCG-T56K	1978-83 T56 6 Speed.....	315.99 ea.
FCM-RCG-T56	1984-88 T56 6 Speed.....	235.99 ea.

No Volume Discount.



DIRECT FIT



FCM-88N

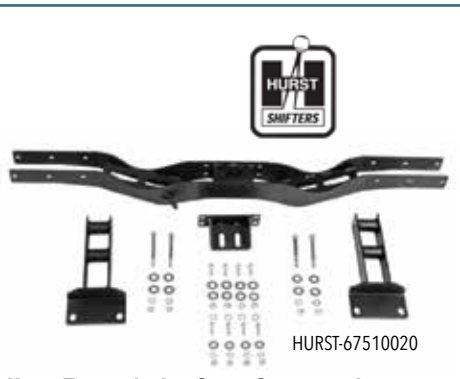


BPC-7000

Transmission Crossmember

Reproduction crossmembers for mounting your transmission.

FCM-88N	1970-72 TH350/4 Speed	139.95 ea.
BPC-7000	1970-72 Mounting Bolts (16 pc.)	6.95 kit



HURST-67510020

Hurst Transmission Swap Crossmembers

These ultra-trick Hurst transmission crossmembers have painstakingly been designed and fabricated from thick steel plate and heavy gauge steel tubing for a perfect fit and finish that has no equal. These Bolt-in units are much stronger than the factory stock crossmembers and help maintain the correct transmission and driveshaft angle. Precision cut and fully MIG-welded, then given a durable black powder coating finish to last a lifetime and give you peace of mind knowing you're buying the best parts available for your Tremec TKO 5-Speed or Magnum 6-Speed conversions. You can surely trust the company that originally started out making conversion mounts back in 1958, Hurst Performance.

HURST-67510020	70-72 Magnum 6, TKO 5-6, TH350, 400, 700R4	421.99 ea.
HURST-67510018	78-88 Magnum 6, TKO 5-6.....	383.99 ea.
HURST-67510019	78-83 Magnum 6 Speed Adapter Kit*	133.99 ea.

No Volume Discount. *Adapter only. Crossmember Not included.

NTR-235



Transmission Mounts

NPG-100	1970-72 Powerglide	11.95 ea.
NTR-235	1970-72 TH350/Manual	13.95 ea.
NTR-225	1970-72 TH400.....	13.95 ea.
BTE-7939	Mounting Bolt.....	0.95 ea.

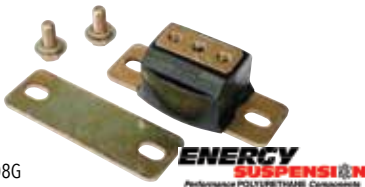


FCB-220

Cable Mounting Bracket

Correct bracket for mounting cable to transmission.

FCB-1210	1970-72 TH350.....	16.99 ea.
FCB-220	1970-72 TH400.....	21.99 ea.
FCB-193	1974-75 TH400.....	35.99 ea.



3-1108G

Poly Graphite Transmission Mount

Poly graphite mounts outlast OEM mounts and are also able to absorb most driveline vibrations.

3-1108G	1970-88 All Black.....	36.99 ea.
3-1108R	1970-88 All Red	36.99 ea.



FTB-13433

Column Shift Transmission Bracket

Correct column shift transmission bracket which mounts on all column shift GM cars from 1970-1977.

FTB-13433	1970-77	11.99 ea.
-----------	---------------	-----------



FCB-222

FCB-322

Shifter Cable Lever Brackets

Correct cable lever brackets which mount to transmission.

FCB-322	1970-71 1st Design.....	19.99 ea.
FCB-222	1972 2nd Design	24.95 ea.



FTH-050

Shifter Cable Stud

Correct cable stud which mounts to bracket.

FTH-050	Mounting Stud (to bracket).....	9.99 ea.
---------	---------------------------------	----------



ACC-8555

ATE-2101

Kickdown

Correct kickdown switch for TH400.

ATE-2101	1970-72 TH400 Switch.....	42.99 ea.
ACC-8555	1970-72 Switch Bracket	19.95 ea.
17565	1971-72 TH400 Harness	23.99 ea.



S530

S531

Kickdown Cable & Bracket

Correct kickdown cable and bracket for cars with a TH350 transmission.

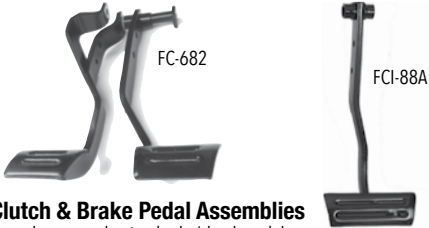
S530KIT	All Cable & Bracket Kit	32.31 kit
S530	All Cable	20.95 ea.
S531	All Bracket.....	14.95 ea.



FBC-799

Clutch Pedal Booster Rod & Clip

FBC-799	Booster Rod Clip	6.99 ea.
FBF-606	Booster Rod Fork.....	14.95 ea.



Clutch & Brake Pedal Assemblies

Complete reproduction brake/clutch pedals.

FC-682	1970-72 All	99.99 ea.
FCI-88A	1970-72 Auto Brake Pedal	49.99 ea.
IBP-628	1970-77 Auto Pedal Pivot Pin	14.99 ea.
FC-78K	1978-88 Manual Brake & Clutch	269.99 ea.
FC-78C	1978-88 Clutch Pedal Only	137.99 ea.
FC-78B	1978-88 Brake Pedal Only	137.99 ea.
FPS-6816	1978-88 Pivot Sleeve*	10.99 ea.

* One required for automatic transmissions and two for manual.



Back Drive Components

Correct bracket, spring, nylon bushing and mounting bolts that mount to the driver's side frame rail. Provides a pivot point for the automatic on the column shift linkage.

NT-391A	1970-72 Complete Kit	27.99 kit
NT-2833	1970-72 Bracket Only	16.95 ea.
NT-69BU	1970-72 Bushing Only	5.95 ea.
FB-69SP	1970-72 Back Drive Spring	5.95 ea.



Clutch Pedal Bushing & Bumper

Correct nylon bushing used for ease of pedal.

FPB-97	All Bushing	1.99 ea.
FPB-103	All Bumper	3.95 ea.
FPS-6810	1978-88 Pedal Bump Stop	17.99 ea.



Transmission Cooler Hose Kit

These flexible braided stainless steel transmission cooler hoses fit either single or dual pass cooler set ups. Includes fittings.

GCS-S5047	All	119.99 kit
-----------	-----	------------

48" hose length.



Dipstick & Tubes

GM replacement dipstick and tubes.

FDT-350	TH350 Tube	21.95 ea.
FDT-400	TH400 Tube	21.95 ea.
FDS-3	TH350 Stick	9.95 ea.
FDS-4	TH400 Stick	9.95 ea.

FLYWHEEL & CLUTCH



BUY'N SAVE WITH KITS



621 Bellhousing Kit

Complete kit with reproduction "621" bellhousing, clutch fork, fork boot, throwout bearing, bolts and inspection cover. Fits cars with 11" clutch.

FBH-621SUPERKIT	Complete Kit	263.74 kit
FBH-621K	Bellhousing and Cover	174.93 kit
FBH-621	Bellhousing Only	169.95 ea.



Bellhousing Hardware

BPB-9021	Bellhousing to Block (6 pc.)	8.95 kit
BTE-307	Bellhousing to Trans 4 Speed (4 pc.)	8.95 kit



Flywheels

Original GM flywheels.

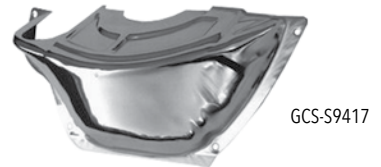
FFW-105	10.5" w/o 454	279.99 ea.
HAYS-10-010	168t 57-85 SBC 65-70 BBC*	97.99 ea.
HAYS-10-020	168t SBC 70-90 BBC**	91.99 ea.

*Internally balanced. **Externally balanced.

12 Piece Bolts

BPB-5116	1970-72 Flywheel to Crank 4 Speed	14.99 kit
BPB-5118	1970-72 Flex Plate to Crank Auto	16.99 kit
BPP-8386	1970-72 Flywheel to Pressure Plate	9.99 kit

No Volume Discount.



Custom Flywheel Inspection Covers

Looks great on any show car!

GCS-S9417	PG Chrome	26.99 ea.
GCS-S8607	TH350/TH400 Polished	47.99 ea.
GCS-S9588	TH350/TH400 Chrome	20.99 ea.
GCS-S9587	TH700-R4 Chrome	27.99 ea.



Heavy Duty Clutch Kits

All HD clutch kits include clutch disc, pressure plate, throwout bearing, pilot bushing, alignment tool and grease pack.

FCK-258	11" 10 Spline BB	210.95 kit
FCK-260	11" 26 Spline BB	219.95 kit
FCK-105	10.5" 10 Spline SB	199.95 kit
FCK-108	10.5" 26 Spline SB	199.95 kit

No Volume Discount.



Flywheel Inspection Covers

OE style reproduction flywheel covers.

FTE-3943	1970-72 Manual 11"	24.95 ea.
NK-4497	1970-72 Manual 10.5"	23.99 ea.
NJ-088	All Powerglide	32.95 ea.
NE-810	All TH350	34.95 ea.
NJ-089	All TH400	93.99 ea.
BFW-506K	Attaching Bolts (4 pc.)	1.95 kit

FPB-ROLLER



Pilot Bushing

New input shaft bushing that goes into the crankshaft.

FPB-667	1970-77 All Brass	13.95 ea.
FPB-ROLLER	1970-77 All Roller	21.99 ea.



FTO-641

Throwout Bearing

Original OEM style throwout bearing.

FTO-641 1970-77 All 44.95 ea.



FTE-9000-ADJ



FTE-9000

Clutch Fork Ball

Original GM clutch fork mounting/pivot ball for inside the bellhousing. We also now offer adjustable pivot ball for after market pressure plates where alignment can be an issue.

FTE-9000 1970-77 All 16.99 ea.
 FTE-9000-ADJ 1970-77 Adjustable 29.95 ea.



FV-1521

Firewall Boot Retainer

FV-1521 1970-72 All 14.95 ea.



FW-68



FRC-100

Clutch Firewall Rods

FW-68 1970-72 All 29.99 ea.
 FW-78G 1978-88 All 66.99 ea.
 FRC-100 Attaching Clip 1.99 ea.



FSS-5053

Firewall Rod Boots

OE style reproduction rubber boots for firewall.

FSS-5053 1970-72 All 14.95 ea.
 FSS-78G 1978-88 All 29.99 ea.

Centerforce Clutches & Flywheels

Whether you are building a street cruiser or a high powered drag race car, Centerforce clutches and flywheels will get you down the road reliably. With kits ranging from your basic entry-level performance clutch, to their radical twin disc kits, Centerforce offers the kit for you.



KCFT355216



N1716

Steel Flywheels

Centerforce steel flywheels are manufactured from high quality billet steel and match closely to the original equipment flywheel weight. Please make sure to double check application before ordering.

700120 11" 168 Tooth, Internally Balanced Engines 454 BB 33 in/oz 298.99 ea.
 700140 11" 168 Tooth, Externally Balanced Engines 381.99 ea.

Flywheels for externally balanced engines have a 23.4 in/oz. counter balance.

Centerforce I Clutch Kits

The Centerforce I Clutch Series is designed as a high-quality entry-level performance clutch for those in need of a superior stock replacement. Please make sure to double check application before ordering.

KCF523516 1970 396ci, 168 Tooth, 11" Clutch, 10 Spline 334.99 kit
 KCF523516 1970 350ci, 168 Tooth, 11" Clutch, 10 Spline 334.99 kit
 KCF523516 1970 400ci, 168 Tooth, 11" Clutch, 10 Spline 334.99 kit
 KCF523516 1972 402ci 168 Tooth, 11" Clutch, 10 Spline 334.99 kit

Centerforce II Clutch Kits

The Centerforce II Clutch Series utilizes a full facing disc with premium friction materials and a pressure plate with patented centrifugal weights (where applicable). Furthermore, static clamp load is increased via a patented machining processes; this combination allows superb holding power and maximum clutch life, making this clutch ideal for selected street/strip applications. Please make sure to double check application before ordering.

KCFT355216 1970 396ci, 168 Tooth, 11" Clutch, 10 Spline 404.99 kit
 KCFT355216 1970 350ci, 168 Tooth, 11" Clutch, 10 Spline 404.99 kit
 KCFT355216 1970 400ci, 168 Tooth, 11" Clutch, 10 Spline 404.99 kit
 KCFT355216 1972 402ci, 168 Tooth, 11" Clutch, 10 Spline 404.99 kit

Centerforce Accessories

N1716 Throw-out Bearing, All 47.99 ea.



HAYS-92-1003



Hays Manual Clutches

Hays Street 450 single disc kits are an excellent upgrade offering up to 30% more holding power over your stock clutch, designed to handle stock and mildly modified engines up to 450 horsepower. This is a great clutch where drivability is the most important factor along with a stock pedal feel.

HAYS-91-1003 10.5" 26 Spline 295.99 kit
 HAYS-91-1002 10.5" 10 Spline 292.99 kit
 HAYS-91-1004 11" 10 Spline 302.99 kit
 HAYS-91-1005 11" 26 Spline 302.99 kit

Hays Street 650 single disc kits are designed to handle highly modified naturally aspirated engines up to 650 horsepower. Designed as a true street/strip clutch for spirited high performance driving or frequent track use.

HAYS-92-1003 10.5" 26 Spline 586.99 kit
 HAYS-92-1002 10.5" 10 Spline 565.99 kit
 HAYS-92-1004 11" 10 Spline 601.99 kit
 HAYS-92-1005 11" 26 Spline 596.99 kit

No Volume Discount.



Lakewood Bellhousing

The Lakewood 15000LKW bellhousing connects Monte Carlo small and big block engines to transmissions utilizing the standard GM pattern such as the Muncie, Saginaw, Borg Warner T10 and Tremec TKO transmissions. This bellhousing is hydro formed to fit '58-'87 GM full and midsize cars, 67-81 F-body vehicles and 68-79 Novas. This bellhousing is S.F.I. 6.1 certified which is required by many sanctioning bodies for cars running 11.49 or faster in the quarter mile. The Lakewood 15000 comes complete with engine block plate and Grade 8 mounting hardware.

LW-15000LKW	1970-1977 SBC, BBC.....	535.99 ea.
FEH-397	1970-72 All Resto Clutch Fork.....	52.99 ea.
FKW-4999	1970-75 All Clutch Fork Boot.....	8.95 ea.
FKW-11LW	1970-1977 All Clutch Fork Boot.....	31.99 ea.
FTE-9000-ADJ	1970-1972 All Adjustable Clutch Fork Ball	29.95 ea.

No Volume Discount.



HAYS-10-010



Hays Automatic Flexplate

Hays heavy duty Flexplate for high performance competition Monte Carlo engines are constructed of a thicker than stock steel plate. This enables them to withstand the stress of high-stall torque converters and high-RPM engines. These flexplates are supplied with a ring gear that is securely welded in place and feature a dual bolt pattern for use with a Powerglide or Turbo style torque converter.

HAYS-10-010	168t 57-85 SBC 65-70 BBC*	97.99 ea.
HAYS-10-020	168t SBC 70-90 BBC**.....	91.99 ea.

*Internally balanced. **Externally balanced.

No Volume Discount.



BM-20230



B&M Automatic Flexplate

Heavy duty flexplate for extreme racing or street applications. SFI certified for NHRA & IHRA.

BM-20230	55-85 168t SBC up to 1991 BBC.....	112.99 ea.
BM-20232	55-85 168t SBC 400.....	120.99 ea.
BM-20233	55-85 168t BBC 454.....	109.99 ea.
BM-20232	55-85 153t SBC	120.99 ea.

*Except SBC 400 and BBC 454. No Volume Discount.

CLUTCH & RELATED



FEH-397

Clutch Fork

New GM style clutch fork.

FEH-397	1970-72 All Resto	52.99 ea.
FEH-397-GM	1970-72 All Original GM.....	105.99 ea.



FB-78G

Clutch Frame Brackets

Correct bracket for mounting Z bar to frame.

FB-566	1970-72	18.95 ea.
FB-78G	1978-88 All	36.99 ea.
BFB-605	Attaching Bolt.....	0.75 ea.



FCE-0681

Clutch Adjustment Rod Kits

FCE-0681	1970-72 All V8	19.99 kit
FRC-100	Attaching Clip.....	1.99 ea.



FKW-4999

Clutch Fork Boot

Original clutch fork dust boot.

FKW-4999	1970-75 All	8.95 ea.
----------	-------------------	----------



FRB-172

Clutch Pedal Push Rod Bushing

This injection molded plastic bushing installs on the clutch pedal and retains the clutch push rod.

FRB-172	1973-75	1.99 ea.
---------	---------------	----------



FRZ-19

Clutch Z Bar

Reproduction "zerk" bar.

FRZ-19	1970-72 All	39.99 ea.
FZ-78G	1978-88 All	147.99 ea.

THIS IS AN EXCLUSIVE GROUND UP PRODUCT

FPX-828

FPX-0696

FPX-6568

Clutch Cross Shaft Kit
Original GM stud balls, nylon seats, protective felts, retaining clips, nuts and washers.

FPX-828	1970-72	29.95 kit
FPX-6568	Block Ball Only	13.95 ea.
FPX-5289	Frame Ball Only.....	20.99 ea.
FPX-3349	Plastic Seat Only.....	2.95 ea.
FPX-3360	Ball Felt	12.99 ea.
FPX-0696	Retaining Clip	1.99 ea.
FPX-33K	Cross Shaft Seat & Seal Kit.....	29.46 kit



FCE-3920

Clutch Return Springs

Original return springs for clutch fork, etc.

FCE-3920	1970-72 All	6.95 ea.
FCS-78G	1978-88 All	15.99 ea.



Hurst Shifter & Installation Kit

This complete Hurst Competition Plus shifter and linkage kit includes a famous Hurst Competition Plus shifter, chrome Hurst shifter handle and white shifter ball with 4 speed pattern as well as a complete Hurst installation kit with all rods, levers, swivels and hardware. This kit will provide you with that vintage muscle car look as well as provide reliable shifts every time!

HURST-KITA69M 1970-72 Muncie 507.36 kit
Part Notes: Please verify that the year of your transmission matches the year of your car before ordering. 1970 Muncie 4-speed transmissions can be identified from later models by the way the transmission arms attach. Early Muncie side covers had a stud and the shift arm attached with a nut on the stud while the 1970 and later model side covers had a hole and the shift arms attached with a bolt.



FHM-69K



Hurst Installation Kits

Complete kit with rods, levers, swivels and hardware.

3737834 1970-72 w/ Muncie 211.99 kit
 3737897 1973-74 w/ Muncie 248.99 kit
 No Volume Discount.



Hurst/Muncie Shifter Kit

This Ground Up exclusive Hurst/Muncie shifter kit allows you to keep an original style Muncie shifter handle and mate it to a Hurst shifter and linkage. Original Muncie shifters performed very poorly, so we created this exclusive kit to keep your car looking original while utilizing the strength and reliability of a bullet proof Hurst Competition Plus shifter. Everything under the shifter handle is covered by your shifter boot so no one will be able to tell it isn't stock.

FHM-69K All 1970-72 w/ Console and/or Buckets 596.60 kit
 FHM-69 All 1970-72 w/ Bench 594.05 kit
 * No Volume Discount.



NT-390



Reverse Lockout Kit

Complete with 2 rods and swivel mechanism.

NT-390 1970-72 w/ Muncie 89.95 kit
 FZ-1420 FW-157



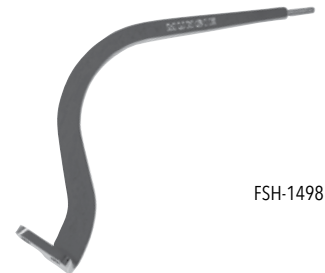
Shifter Balls

Reproduction shifter balls.

FZ-1420 1970-72 White 5/16" 21.99 ea.
 FZ-1424 1970-72 White 3/8" 27.99 ea.
 FW-115 Chrome 5/16" 24.99 ea.
 FW-117 Chrome 3/8" 23.99 ea.
 FW-157 Black/Chrome 5/16" 21.99 ea.
 FW-159 Black/Chrome 3/8" 21.99 ea.



FSH-1499



FSH-1498

1970-72 Muncie Shifter Handles

OE style reproduction chrome shifter handles.

FSH-1498 1970-72 w/o Console 79.95 ea.
 FSH-1499 1970-72 w/ Console 79.95 ea.

SH-203-8



SH-202-8



SH-204-10



Billet Shifter Handles

These billet aluminum shifter handles from Clayton Machine work with any Hurst or Tremec, TK500 TK0600 2 bolt shifter mount and are a great finishing touch for your custom ride! Available in three styles: Basic black anodized, truss style with grey powder coat, truss style adjustable grey powder coat. Shift knob not included. Requires knob with 3/8-16" thread. Same as most Hurst knobs.

SH-203-8 8" Black Ano 30 Degree Kick Back 169.99 ea.
 SH-203-10 10" Black Ano 30 Degree Kick Back 175.99 ea.
 SH-202-8 8" Grey PC Truss Style 30 Degree Kick Back 132.99 ea.
 SH-202-10 10" Grey PC Truss Style 30 Degree Kick Back 137.99 ea.
 SH-204-10 10" Grey PC Truss Style Adjustable Kick Back 228.99 ea.

No Volume Discount.



BM-80675



BM-80706



B&M Automatic Floor Shifters

From the originator of high performance manual shifters our line of performance, street and racing shifters for automatic transmissions won't let you down. With classic good looks and proven mechanical designs giving choices of either positive ratcheting actions or gated racing shifters, provide positive shifts guaranteeing you won't miss a shift when it counts.

Starshifter

Features include NHRA/ IHRA reverse lockout, backup light switch, neutral safety switch, polished T-handle. Cable operated for quick installation and accurate shifting.

BM-80675 All 2&3 Speed 231.99 ea.

Megashifter

The B&M Megashifter has it all, form, function and classic style. This all adds up to bring you a quality shifter that's been one of the most popular automatic shifters of all time. First off let's talk function. The Megashifter's positive ratcheting function won't allow you to over shift and miss a gear at that critical moment, along with the reverse lockout feature meets NHRA/IHRA safety rules for those weekend grudge races at the track. The look and feel of the T-handle and accordion style shift boot really shows off the racing heritage of the Megashifter.

BM-80690 All 2,3,4 Speed..... 372.99 ea.

Quicksilver

The B&M Quicksilver features a ratcheting action for positive shifts, chrome knob, neutral safety switch, NHRA/IHRA approved reverse lockout.

BM-80683 All 2,3,4 Speed..... 337.99 ea.

Hammer

The Hammer shifter may just be the most comfortable and versatile shifter available. The unique design of the shift handle easily fits all sizes of hands providing the best wrist angle and feel when shifting.

BM-80885 All 2,3,4 Speed..... 255.99 ea.

Pro Stick

The Original Pro Stick shifter delivers rock-solid performance, mixed with clean design cues and compact size. This is why you see so many Pro Stick shifters at the race track.

BM-80706 All 2,3,4 Speed..... 328.99 ea.

Stealth Magnum Pro Stick

The Stealth Magnum Grip Pro Stick shifter delivers rock-solid performance, mixed with clean design cues and compact size.

BM-81052 All 2,3,4 Speed..... 312.99 ea.

Pro Ratchet

The Pro Ratchet shifter is one of our most popular and easiest to operate race shifters. Features include a positive ratcheting design that self-centers the handle after each shift giving you maximum clearance behind the shifter and won't allow you to miss a shift by over-shifting a gear. This versatile shifter will operate both forward and reverse shift patterns.

BM-80840 All Silver 2 Speed Powerglide 331.99 ea.

BM-80842 All Silver 3,4 Speed* 331.99 ea.

BM-80843 All Carbon 3,4 Speed* 334.99 ea.

BM-81120 All Stealth 3,4 Speed* 414.99 ea.

*May require PRNDL switch for some applications. No Volume Discount.



HURST-3838530



HURST-3160001

Hurst Automatic Shifters

From the originator of high performance manual shifters, is our line of performance street and racing shifters for automatic transmissions that won't let you down. With classic good looks and proven mechanical designs giving choices of either positive ratcheting actions, or gated racing shifters providing positive shifts guaranteeing you won't miss a shift when it counts.

Pro-Matic 2

Ratchet-action shifter with its chrome-plated stick and black knob is quality engineered for years of precise, trouble-free operation. Once the shifter is installed, the textured console and brilliant top cover that can be trimmed to fit any floor contour integrates the shifter with the interior.

HURST-3838500 All 3 Speed 317.99 ea.

V-Matic 3 Shifter

Designed with a park and reverse lock trigger actuating system that allows smooth and flawless ratcheting through the forward gears.

HURST-3838530 All 3 & 4 Speed 369.99 ea.

Quarter Stick

The Quarter Stick shifter provides positive gear change control for both street and race applications. Its compact size fits easily in racecars with limited space and is very lightweight at only 2.5 pounds. Features include black oxide coated steel construction, 1018 hardened steel gate plate, forged aluminum shift stick with 7/16-20 tpi and a classic white Hurst shift knob.

HURST-3160001 All 2 Speed*..... 319.99 ea.

HURST-3160006 All 3 Speed** 319.99 ea.

HURST-3160020 All 3 Speed*..... 322.99 ea.

*Reverse valve body. **Forward valve body.



FW-HURST



Hurst T Handle Shifter Knob

This brushed aluminum t-handle provides a positive feel for accurate gear selection. A favorite in the performance world for years! Includes adapters for most popular shift handles.

FW-HURST T-Handle 37.99 ea.



HURST-5389023



HURST-5389020

Hurst Billet Shifter Handles

This is a great way to add a contemporary performance look to your muscle car. Billet Aluminum construction is precision CNC machined for a modern look and feel. Fits classic Hurst shifters with a 2 bolt pattern.

HURST-5389020 6" Straight.....83.99 ea.

HURST-5389021 8" Straight.....93.99 ea.

HURST-5389022 10" Straight.....105.99 ea.

HURST-5389023 6" Lay Back.....93.99 ea.

HURST-5389024 8" Lay Back.....105.99 ea.

HURST-5389025 10" Lay Back.....128.99 ea.

No Volume Discount.



ICE-HURST



ICE-INDY

Hurst Shifter Boots

Brand new injection molded boots.

ICE-HURST Universal.....60.99 ea.

ICE-INDY Universal Indy Shift Boot.....27.99 ea.



THIS IS AN
EXCLUSIVE
GROUND UP PRODUCT



IT-1360K



BUY 'N SAVE
WITH KITS

Boot & Retainer Kit

Buy a correct shift boot and retainer for your 1970-72 Monte Carlo with console and save!!!

IT-1360K 1970-72 w/ Console..... 32.22 kit



IT-1360



NT-196

Shift Boot Retainers

Correct die stamped steel boot retainers.

IT-1360 1970-72 w/ Console..... 18.95 ea.
NT-196 1970-72 w/o Console (2 pc.)..... 69.95 ea.
IT-3954 1978-88 w/o Console..... 34.99 ea.



ICE-5356



ICE-5405

Shifter Boots

Brand new injection molded boots.

ICE-5356 1970-72 w/ Console..... 18.95 ea.
ICE-5405 1970-72 w/o Console..... 21.95 ea.
IE-4010 1978-88 w/o Console..... 52.99 ea.

DRIVETRAIN ACCESSORIES



HURST-5000023



HURST-5008555



HURST-5000029

Hurst Shifter Cables

These premium quality cables feature a solid 303 stainless steel inner wire core encased within a nylon liner wrapped with helical lay wires and swaged ends for superior strength. The core is lubricated with Teflon prior to assembly and then sealed in a heavy plastic outer casing for a lifetime of durability and smooth operation.

Single eyelet on one end and threaded on the other end.
HURST-5000023 3 Feet 72.99 ea.
HURST-5000025 5 Feet 68.99 ea.
HURST-5000028 8 Feet 88.99 ea.

Single eyelet on one end and threaded on the other end. For Pro-Matic & V-Matic shifters
HURST-5008555 5 Feet 65.99 ea.

Eyelets on both ends for quarter stick.
HURST-5000029 5 Feet 76.99 ea.
No Volume Discount.



FCC-305

Speedometer Cables

New complete cables with casings and correct ends ready to install.

Check your speedometer fitting and length before ordering.

FCC-202 1970-77 100" (Clip on speedo end) 18.95 ea.
FCC-205 1970-77 80" (Clip on speedo end) 18.95 ea.
FCC-305 1970-77 61" (Clip on speedo end) 18.95 ea.
FCC-309 1970-77 41" (Clip on speedo end) 18.95 ea.
FSG-22 1970-72 Grommet 7.95 ea.
FSG-78G 1978-88 All Grommet 15.99 ea.

Note: Longer cables are for cars with passenger side screw ins on transmission.



GNS-35

Neutral Safety Switch

Correct steering column switch for proper engine and reverse light activation.

GNS-33 1970-72 Manual 49.99 ea.
GDR-411 1970-72 Auto Console 21.95 ea.
GNS-35 1970-73 Auto Column 16.99 ea.



GNS-1588

Neutral Start Switch

Correct safety switch located at pedal which prevents your car from being started in gear.

GNS-1588 1970 4 Speed 52.95 ea.
GNS-1589 1971-72 4 Speed 49.95 ea.



FHB-13653

Speedometer Cable Clip

Bolts to the bottom of the transmission tail shaft bolt to keep the speedometer cable from hanging down.

FHB-13653 1970-79 4 Speed 14.99 ea.



BM-70264

B&M Transmission Coolers & Kits

B&M Super Coolers are 100% aluminum stacked plate style core which is ideal for additional transmission cooling. With oven brazed construction this sturdy cooler design is practically impervious to flying rocks or other debris.

Small
BM-70265 All 7,500 BTU Polished 99.99 ea.
BM-70273 All 15,000 BTU Black 90.99 ea.

Medium
BM-70268 All 13,000 BTU Black 92.99 kit
BM-70266 All 20,500 BTU Black 124.99 ea.
BM-70272 All 20,500 BTU Polished 170.99 ea.

Large
BM-70264 All 14,400 BTU Black 108.99 kit
BM-70274 All 29,200 BTU Black 150.99 ea.

No Volume Discount.



BM-70298

B&M HiTek Cooling Systems

Hi-Tek Super Coolers are fitted with a high quality 12 Volt electric fans and built-in mounting brackets which makes it ideal for maximum cooling. Suitable for many fluids including ATF, Engine Oil, Differential Oil and power steering fluid.

- BM-70298 All 350 CFM Black337.99 ea.
 - BM-70297 All 590 CFM Black372.99 ea.
- No Volume Discount.*



FR-158RM

FR-158SS

FR-158RK

FR-158SH

Transmission Speedometer Gears

These are the correct speedometer drive gears which go inside the transmission case. Please compare the gear you have to what you are ordering as the color or tooth count may vary from original. We do not have an application chart for these so if changing axle ratios or tire size please consult various online resources.

Muncie M20, M21, M22.

Saginaw 3 & 4 Speed and Powerglide

- FR-158RB 17 Tooth Purple 16.95 ea.
- FR-158RD 18 Tooth Brown 16.95 ea.
- FR-158RF 19 Tooth Natural 16.95 ea.
- FR-158RH 20 Tooth Blue 16.95 ea.
- FR-158RK 21 Tooth Red 16.95 ea.
- FR-158RM 22 Tooth Gray 16.95 ea.
- FR-158RS 23 Tooth Black 16.95 ea.
- FR-158RV 24 Tooth Orange 16.95 ea.

TH350, TH375, TH400, TH475

- FR-158SB 35 Tooth Pink 16.95 ea.
- FR-158SD 36 Tooth White 16.95 ea.
- FR-158SF 37 Tooth Red 19.95 ea.
- FR-158SH 38 Tooth Blue 16.95 ea.
- FR-158SM 40 Tooth Black 16.95 ea.
- FR-158SP 41 Tooth Yellow 16.95 ea.
- FR-158SS 42 Tooth Green 16.95 ea.
- FR-158SV 43 Tooth Purple 16.95 ea.
- FR-158SX 44 Tooth Dark Gray 16.95 ea.
- FR-158SZ 45 Tooth Light Blue 16.95 ea.



BM-20248

B&M Governor Recalibration Kit

This kit allows you to adjust the shift points of your transmission after it is installed in your vehicle. The Governor Recalibration Kit is very useful if you have a vehicle that is very light; has a low rear-end gear ratio.

- BM-20248 55-85 TH350, TH400, TH700R483.99 kit
- No Volume Discount.*



BM-30229

B&M Transpak, Transkit & Master Overhaul Kits

B&M Transpak has all the features in the Shift Improver Kit, plus it provides additional driver manual control. Retain full automatic features and standard shift points with selector in Drive.

- BM-30228 1970-77 TH35097.99 ea.

B&M Transkits give you the same high-quality components that are used in all B&M Street and Strip transmissions. They also include special directions on how to modify your case, pump, and components.

- BM-30229 1970-77 TH350285.99 ea.

B&M Master Racing overhaul kits are supplied with all of the gaskets, seals, bushings, and friction material required for a complete high performance or racing trans overhaul.

- BM-21042 1970-77 TH350 241.99 kit
- BM-21041 1970-77 TH400 262.99 kit

No Volume Discount.



REVSKIT-UNI

Universal Reverse Lamp Switch Manual

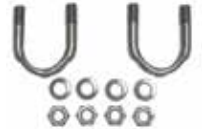
This kit allows you to add a reverse light switch to non-stock applications. If you have a Hurst shifter this kit is a must.

- REVSKIT-UNI All39.99 ea.

BPU-337



BPU-334



U Joint Attaching Kits

Correct straps and bolts for attaching the drive shaft to rear yoke.

- BPU-337 All Straps w/ Bolts15.99 kit
- BPU-334 All U Bolts w/ Nuts16.99 kit



FTS-350

Tail Seals

Correct tail shaft yoke seals.

- FTS-PG Powerglide 5.99 ea.
- FTS-350 TH350 5.95 ea.
- FTS-400 TH400 10.95 ea.



BSB-12925

Tail Shaft Bolts

Correct TR head markings & black phosphate plating.

- BSB-12925 PG, TH350, TH400 (6 pc.) 9.99 kit



FY-935

Yokes

New front drive shaft & rear differential yokes.

- FY-123 Front Yoke TH40099.99 ea.
- FY-935 Front Yoke TH350/4 Speed99.95 ea.



UMI-4500-B

UMI Driveshaft Safety Loops

This one-piece NHRA legal driveshaft safety loop is a Bolt-in or weld-in application for your Monte Carlo. This driveshaft loop is contoured for the A-Body floor pan and bolts or welds into the reinforcement rib located behind the transmission. This is a must for tracks that require a safety loop for cars running faster than 13.99 in the quarter mile. The entire loop is constructed of 0.250 thick mild steel, CNC machined mounting points for a superb fit and fully MIG welded for outstanding strength.

- UMI-4500-B 1970-72 All Black79.99 kit
- UMI-4500-R 1970-72 All Red 79.95 kit
- UMI-3500-B 1978-88 All Black79.95 kit
- UMI-3500-R 1978-88 All Red79.95 kit



GCS-S7120

Universal Driveshaft Loop

- GCS-S7120 Universal28.99 ea.

TTP-71



TTP-70



TTP-6972



Turbo HydraMatic Transmission ID Tags

Turbo HydraMatic transmission ID tag with rivet, measuring 1-1/8 inch x 1-15/16 inch. This installs on the side of the transmission case with the rivet. You must punch your own info onto the tag.

TTP-70	1970 Black.....	29.99 ea.
TTP-71	1971 Light Blue.....	29.99 ea.
TTP-6972	1972 Yellow.....	29.99 ea.



HBB-5847



N-7081

Rear End Plugs & Posi Tag

Reproduction plugs and posi tag.

HBB-5847	All Metal Tag.....	6.95 ea.
FDP-3R	1970-72 Plug 3/4".....	16.95 ea.
FPT-1	1970-72 Posi Tag 3/4".....	12.95 ea.
N-7081	1970-72 Vent Plug.....	9.95 ea.



ATS-653

TCS Wire Retainer

Correct reproduction for Muncie.

ATS-653	1970-74 w/ Muncie.....	19.95 ea.
---------	------------------------	-----------



BM-70500



B&M Differential Covers

B&M Cast Aluminum Differential Covers are designed to strengthen the differential by preventing case distortion and ring gear & bearing cap deflection. Constructed of A356.0-T6 aluminum, these rugged covers significantly increase the fluid capacity and dissipate heat much faster than the stock factory unit to prolong the life of your ring and pinion gears.

BM-70500	12 Bolt 8.875" Ring Gear Silver.....	198.99 ea.
BM-70502	10 Bolt 8.2, 5, 6" Ring Gear Silver.....	202.99 ea.
BM-71502	10 Bolt 8.2, 5, 6" Ring Gear Black.....	221.99 ea.
BM-70503	10 Bolt 8.2" BOP Ring Gear Silver.....	181.99 ea.

No Volume Discount.

TRANSMISSION PANS & REAR END COVERS



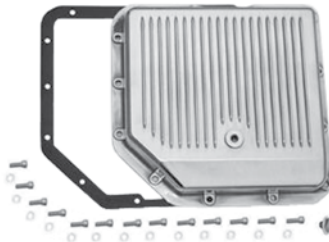
BM-30280

B&M Deep Transmission Pan Cast

These B&M automatic transmission deep pans provide additional fluid capacity and cooling ability. No modifications to the dipstick are needed. They include a drain plug for clean and easy fluid changes. Adds 2-3 quarts to the transmission.

BM-30280	All TH350, TH250 3Qts.....	190.99 ea.
BM-20280	All TH400 2Qts.....	173.99 ea.
BM-70280	All Powerglide 2Qts.....	184.99 ea.
BM-70260	All TH700RH, 4L60/65E 3Qts.....	265.99 ea.

No Volume Discount.



GCS-S8491

Polished Fined Transmission Pans

Show quality polished stock depth pan crafted from cast aluminum and polished to a bright finish. Includes gasket, drain plug and bolts.

GCS-S8491	TH350.....	52.99 ea.
GCS-S8492	TH400.....	62.99 ea.
GCS-S8493	TH700-R4.....	62.99 ea.



GCS-S9074



GCS-S9124

Chrome Transmission Pans

Stock depth. Chrome plated steel for a show quality finish.

GCS-S9074	TH350.....	19.99 ea.
GCS-S7599	TH700-R4.....	24.99 ea.
GCS-S9124	Powerglide w/ Fins.....	19.99 ea.
GCS-S9122	TH350 Turbo w/ Fins.....	17.99 ea.
GCS-S9121	TH400 Turbo w/ Fins.....	17.99 ea.
GCS-S9712	TH700-R4 w/ Fins.....	24.99 ea.



GCS-S9197

Extra Capacity Fined Transmission Pans

Same quality show finish as our stock pans but with extra fluid capacity for better cooling.

GCS-S9197	400 Turbo 1.5 Extra Qts.....	20.99 ea.
GCS-S9196	400 Turbo 2.5 Extra Qts.....	28.99 ea.
GCS-S9197BK	400 Turbo 1.5 Extra Qts. Black.....	20.99 ea.
GCS-S9198BK	350 Turbo 1.5 Extra Qts. Black.....	20.99 ea.
GCS-S9712BK	700-R4 Turbo 1.5 Extra Qts. Black.....	26.99 ea.

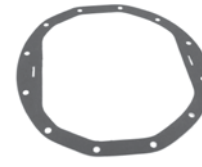


GCS-S4787

Custom Rear End Covers

Choose from high quality chrome or bright polished aluminum. A great finishing touch!

GCS-S4786	10 Bolt Chrome.....	15.99 ea.
GCS-S4787	12 Bolt Chrome.....	15.99 ea.
GCS-S5082	12 Bolt Polished.....	84.99 ea.
GCS-R0002X	Bolt Kit.....	8.99 kit



FPF-12B



NP-109

Rear End Cover

Reproduction 12 bolt cover.

NP-109	All 12 Bolt Cover.....	49.95 ea.
FPF-10B	10 Bolt Gasket.....	6.95 ea.
FPF-12B	12 Bolt Gasket.....	6.95 ea.
BRE-2008	Cover Bolt.....	0.95 ea.

FPF-49

FPF-668



Rear End Fluid

AC Delco special fluid and posi additive.

FPF-668	Rear End Fluid.....	24.95 ea.
FPF-49	Posi Additive.....	14.95 ea.