

**FENDERS & RELATED**

**Fenders**

Our reproduction fenders are manufactured to duplicate the originals in both fit and appearance. All fenders come EDP coated. Just as with original GM fenders, we recommend test fitting before painting or modifying.

*No Volume Discount. All fenders ship Truck Freight to a commercial address. Not eligible for free shipping.*



RIF-73P



RIFS-787

**Front Inner Fenders**

Brand new die-stamped inner fender wells.

- RIF-73P 1973-77 All Plastic ..... 249.95 pr.
  - BIF-64K Hardware Kit..... 26.95 ea.
  - RIFS-787 1978-88 All Inner Fender Shields .... 44.95 pr.
- Ships Oversize 2. Not eligible for free shipping.*



RF-81MCL



RF-81MCR

**Monte Carlo Fenders**

This is an exact reproduction 1981-1988 Monte Carlo fender which is constructed of heavy gauge steel and features all of the correct bracing as original. This is a great replacement for your original dented or rusty fender and it is black EDP coated for rust prevention.

- RF-81MCL 1981-88 All\* ..... 159.95 ea.
  - RF-81MCR 1981-88 All\* ..... 159.95 ea.
- \*Except LS



RFB-3900

**Lower Fender Support Braces**

These lower fender braces connect the lower fenders to the radiator support for rigidity. Includes hardware.

- RFB-3900 1970-72 All ..... 24.95 pr.

**FRONT END SHEET METAL**

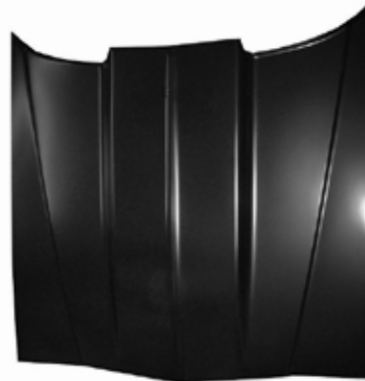


BFE-8002

**Front End Fastener Kit**

Over 175 pieces all individually bagged to attach all of your front end sheet metal including fenders, grille, inner fenders, hood, etc.

- BFE-8002 1970-72 All ..... 45.95 kit



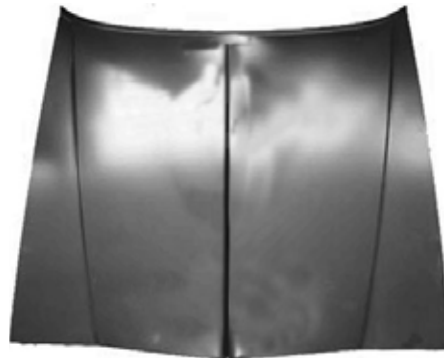
RH-812



**Cowl Induction Hood**

These are the hoods that GM should have made! Let people know your ride means business with one of these 2" cowl hoods!

- RH-812 1981-88 2" Cowl..... 319.95 ea.
- No Volume Discount. Ships Truck Freight to a commercial address. Not eligible for free shipping.*



RH-818

**Standard Hood**

Reproduction hood, each hood is finished in a protective EDP coating to prevent rust and is ready to be prepped and painted. You can be sure you are receiving the highest quality hood on the market.

- RH-818 1981-88 ..... 199.95 ea.
- No Volume Discount. Ships Truck Freight to a commercial address. Not eligible for free shipping.*



RRS-8188



RSB-1330

**Radiator Supports**

Reproduction radiator supports.

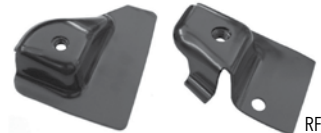
- RRS-8188 1981-88 ..... 399.99 ea.
  - RSB-1330 1981-88 3pc Support Brace Kit..... 79.95 kit
- No Volume Discount.*



**Firewall Brackets**

Reproduction firewall brackets (where your body bushings attach)

- RFP-1461F 1970-72 ..... 109.95 pr.



RFB-3468

**Fender to Firewall Brackets**

These brackets provide the mounting points for the fenders.

- RFB-3468 1970-72 All ..... 39.95 pr.



RFP-1461B



**Firewalls**

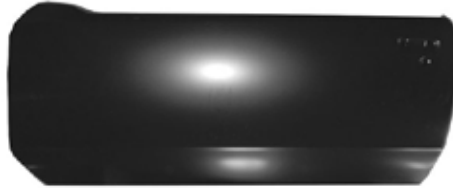
Brand new complete firewalls.

- RFP-1461A 1970-72 Firewall w/ AC ..... 329.95 ea.
  - RFP-1461B 1970-72 Firewall w/o AC ..... 329.95 ea.
  - RFP-1461C 1970-72 Firewall Heater Delete.... 329.95 ea.
- Ships Truck Freight to a commercial address. Not eligible for free shipping. No Volume Discount.*

**DOOR & RELATED**



RDS-81MCL



RDS-86MCL

**Door Skins**

Door skins are perfect for repairing doors that have not rusted through the inner shell. These stamped steel panels replace your old rusty skin.

RDS-81MCL	1981-85 LH.....	209.95 ea.
RDS-81MCR	1981-85 RH.....	209.95 ea.
RDS-86MCL	1986-88 LH.....	209.99 ea.
RDS-86MCR	1986-88 RH.....	209.99 ea.

No Volume Discount. Ships Oversize 2. Not eligible for free shipping.



RSH-81MCL

**Door Shells**

These full door shells feature the outer door skin welded to the shell as original. Perfect when your entire door has rusted through.

RSH-81MCL	1981-85 LH.....	499.95 ea.
RSH-81MCR	1981-85 RH.....	499.95 ea.
RSH-86MCL	1986-88 LH.....	489.99 ea.
RSH-86MCR	1986-88 RH.....	489.99 ea.

No Volume Discount. Ships Truck Freight to a commercial address. Not eligible for free shipping.



RHS-9



BAV-2623

**Door Hinge Hardware**

Correct OEM bolts and heavy spring.

BAV-2623	1970-72 Hex.....	1.99 ea.
RHS-9	1970-72 Spring.....	8.99 ea.
BAV-2623K	Hex (24 pc.).....	38.21 kit



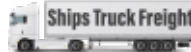
BPX-2225

**Door Hinge Pin Kits**

Correct hinge pins and brass bushings for repairing all 4 of your door hinges.

BPX-2225	1970-72 (12 pc.).....	13.99 ea.
----------	-----------------------	-----------

May require slight modification to hinges.



RDR-72K

**Hinge Detent Rollers**

Correct machined detent rollers for lower hinges.

RDR-72K	1970-72 All.....	26.99 kit
---------	------------------	-----------



RDH-088LL

**Door Hinges**

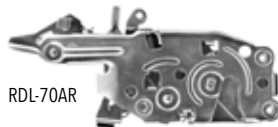
Reproduction door hinges.

**Upper**

RDH-170U	1970-72 All RH/LH.....	59.95 ea.
RDH-78UL	1978-88 All LH.....	69.95 ea.
RDH-78UR	1978-88 All RH.....	69.95 ea.

**Lower**

RDH-088LL	1970-72 LH.....	59.95 ea.
RDH-088LR	1970-72 RH.....	59.95 ea.
RDH-78L	1978-88 All LH/RH.....	59.95 ea.



RDL-70AR



RDL-SCREW

**Door Latch Assemblies**

Reproduction door latch assemblies.

RDL-70AL	1970-72 LH.....	69.95 ea.
RDL-70AR	1970-72 RH.....	69.95 ea.
RDL-70AK	1970-72 Kit (Both Sides).....	111.92 kit
RDL-828L	1982-88 All LH.....	79.99 ea.
RDL-828R	1982-88 All RH.....	79.99 ea.
RDL-SCREW	1970-77 Screw 3 pc*.....	6.95 set

\*Part Notes: This kit does one door latch. 1 kit required per door.



BPX-1275



BPX-1299

**Door Strikers w/ Washer**

BPX-1275	GM Replacement.....	9.99 ea.
BPX-1299	Reproduction*.....	11.99 ea.
BPX-1299K	Reproduction Pair.....	20.38 kit

\*Correct Allen Head Zinc Plated.

**ROOF**



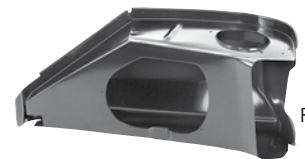
RTT-7888

**Roof Panel**

This is a correct 8 piece set of stainless steel T-top trim for 1978-1988 Monte Carlo.

RTT-7888 1978-88 T-Top Trim.....309.99 set  
Ships Truck Freight to a commercial address. Not eligible for free shipping. No Volume Discount.

**COWL**



RCS-68R

**Cowl Shoulder Assembly**

Complete replacement for this often rotted out area.

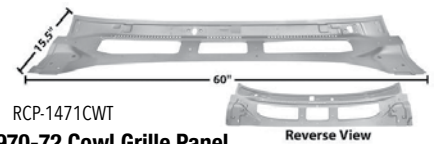
RCS-68L	1970-72 LH.....	123.95 ea.
RCS-68R	1970-72 RH.....	123.95 ea.



RCP-7L

**1970-72 Cowl Side Panel**

RCP-7L	1970-72 LH.....	63.95 ea.
RCP-7R	1970-72 RH.....	63.95 ea.



RCP-1471CWT

**1970-72 Cowl Grille Panel**

Reproduction perfect for replacing this commonly rotted area. Features Weld-Thru primer.

RCP-1471CWT	1970-72.....	199.95 ea.
-------------	--------------	------------

Ships Oversize 2.



RCP-1419WT

**1970-72 Cowl Panel**

This lower cowl panel offers a complete replacement for this often rotted out area. This complete cowl panel includes the entire wiper valley so you can be sure to eliminate any rust or rot all in one shot.

RCP-1419WT	1970-72.....	369.95 ea.
------------	--------------	------------

Ships Oversize 2. Not eligible for free shipping.

**ARCH & WHEELHOUSE**



RWH-818AL

**Complete Monte Carlo Wheelhouse Assemblies**

These complete wheelhouse assemblies feature the inners and outers already welded together, saving you a lot of time and money!

RWH-818AL	1981-88 LH.....	305.95 ea.
RWH-818AR	1981-88 RH.....	305.95 ea.

*Ships Oversize 2. Not eligible for free shipping. No Volume Discount.*



RWH-291L



RWH-813L

**Monte Carlo Inner Rear Wheelhouses**

New inner rear section of wheelhouse which installs between the trunk area and seams to the outer wheelhouse. It is always a good idea to replace your wheelhouses when you replace your quarter panels!

RWH-291L	1970-72 LH.....	75.95 ea.
RWH-291R	1970-72 RH.....	75.95 ea.
RWH-813L	1983-1988 LH.....	149.95 ea.
RWH-813R	1983-1988 RH.....	149.95 ea.

*Ships Oversize 2. Not eligible for free shipping. No Volume Discount.*



RWH-818MCOL

**Outer Rear Wheelhouses**

Correct steel wheelhouses which attach to the inside of the quarter panel. It is always a good idea to replace your wheelhouses when you replace your quarter panels! Buy the pair and save 10%. Just ask your sales rep!

RWH-818MCOL	1981-88 Monte Carlo LH.....	119.95 ea.
RWH-818MCOR	1981-88 Monte Carlo RH.....	119.95 ea.

*Ships Oversize. Not eligible for free shipping. No Volume Discount.*

**QUARTER PANEL**



RFQ-MC702L



RFQ-818L

**1970-1988 Quarter Panels**

This OE quality quarter panel is the perfect replacement! There is no need to spend a fortune on a NOS quarter. These are extremely high quality pieces, so you can be sure to get the best fit possible.

RFQ-MC702L	1970-1972 LH OE Quality.....	499.95 ea.
RFQ-MC702R	1970-1972 RH OE Quality.....	499.95 ea.
RFQ-818L	1981-88 LH OE Quality.....	379.95 ea.
RFQ-818R	1981-88 RH OE Quality.....	379.95 ea.

*Ships Truck. Not eligible for free shipping. No Volume Discount.*



RQE-70ML



RQE-70MR

**1970-1972 Quarter Panels Extensions**

Reproduction of the original 1970-1972 Monte Carlo quarter panel extension (or drop off) which connects the inside lower rear of the quarter panel to the outside of the trunk. It is recommended to replace this piece when replacing a trunk or a quarter panel. Odds are high your trunk floor extensions (drop offs) will need replacement or repair if your quarter panels and wheelhouses contain rust. It's very common to need all three items since they are all connected. Our trunk floor extensions are direct replacements of originals and feature correct flanges, tabs, holes and bends.

RQE-70ML	1970-1972 LH.....	99.99 ea.
RQE-70MR	1970-1972 RH.....	99.99 ea.

*Ships Oversize. Not eligible for free shipping. No Volume Discount.*

**FLOOR & RELATED**



**1970-72 Full Floor Pan w/ Braces, Rear Seat Pan & Rockers**

This floor pan featuring all braces, rear seat panel and rocker panels completely assembled saving you a ton of time and money over individually piecing together a floor!

RFP-1462Y	1970-72.....	899.95 ea.
-----------	--------------	------------

*No Volume Discount. Ships Truck Freight to a commercial address. Not eligible for free shipping.*



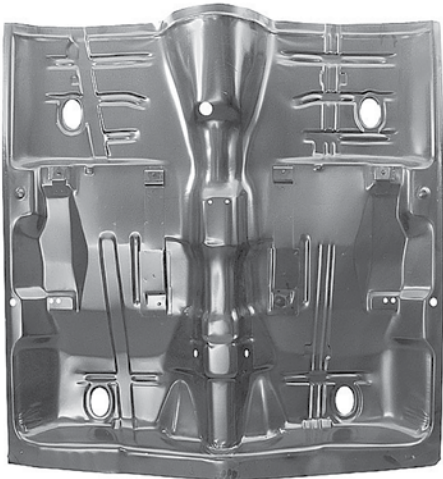
**1970-72 Full Floor Pan w/ Braces & Rear Seat Pan**

This complete floor pan features all braces as well as rear seat panel already installed! This will save you hours over welding in individual pieces of floor pan!

RFP-1462X	1970-72.....	599.95 ea.
-----------	--------------	------------

*No Volume Discount. Ships Truck Freight to a commercial address. Not eligible for free shipping.*





**1970-72 Full Floor Pan**

This is an excellent basic replacement full floor minus the braces, rear seat pan and rocker panels.

RFP-1462 1970-72 .....299.95 ea.  
*No Volume Discount. Ships Truck Freight to a commercial address. Not eligible for free shipping.*



**Half Side Floor Pans**

Full half side floor panels which seam in the middle. All 1970-67 floor panels feature wiring harness retainers as well as gas pedal mounting plate as original.

- RP-68FL 1970-72 Monte Carlo LH .....99.95 ea.
- RP-68FR 1970-72 Monte Carlo RH .....99.95 ea.
- RFP-78L 1978-88 Monte Carlo\*\* LH .....149.95 ea.
- RFP-78R 1978-88 Monte Carlo\*\* RH .....149.95 ea.

**\*\* Can be cut to fit Malibu and Monte Carlo**  
*Ships Truck Freight to a commercial address. Not eligible for free shipping.*



RFP-72FL

RFP-72FR



RFP-72RL

RFP-72RR

**Floor Pan Patches**

These front floor patches are high quality and constructed of heavy gauge steel. Perfect when only portions of your floor are rotted out.

- RFP-72FL 1970-72 Front LH .....69.99 ea.
- RFP-72FR 1970-72 Front RH .....69.99 ea.
- RFP-72RL 1970-72 Rear LH .....69.99 ea.
- RFP-72RR 1970-72 Rear RH .....69.99 ea.
- RFP-78FL 1978-88 Front LH\* .....75.95 ea.
- RFP-78FR 1978-88 Front RH\* .....75.95 ea.
- RFP-78RL 1978-88 Rear LH\* .....75.95 ea.
- RFP-78RR 1978-88 Rear RH\* .....75.95 ea.

**\*Can be used on other G-bodies with modifications.**  
*Ships Oversize. Not eligible for free shipping.*



**1978-88 Monte Carlo, Malibu Full Floor**

The days of welding together pieces of floors are finally over. This new Monte Carlo, Caballero and Malibu full floor pan is a direct replacement for your old, rotted floor and will save you tons of time and money because you won't have to weld-in and finish individual pieces.

RFP-7888 1978-88 All \* .....349.95 ea.  
*\* Direct replacement for 1978-87 El Camino. May require some cutting on the rear for Malibu, Monte Carlo, Regal, Cutlass and Grand Prix. This is the floor pan only. It does not include any braces or brackets.*

*Ships Truck Freight To A Commercial Address. Not eligible for free shipping.*



**Floor Pan Patch Kit**

This Monte Carlo floor pan patch kit includes front left and right floor pan patches and rear left and right floor pan patches. This is a great lower cost alternative to a full floor pan because this kit can ship via UPS instead of truck freight.

RFP-72K 1970-72 ..... 251.96 kit  
*Ships Oversize 2. Not eligible for free shipping. No Volume Discount.*



**Toe Boards**

This toe board or floor pan extension connects the front of the floor pan to the firewall and is a commonly rotted out area. Now includes part of the transmission hump.

- RTB-68L 1970-72 LH .....59.95 ea.
- RTB-68R 1970-72 RH .....59.95 ea.

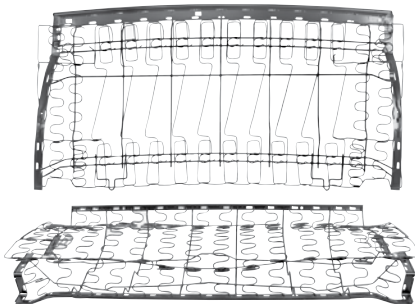


ISA-669

**Bucket Seat Frames**

Complete bucket seat frame assemblies with seat springs already installed!

ISA-669 1970-72 All .....395.00 ea.  
*No Volume Discount. Ships Oversize 2. Not eligible for free shipping.*



ISF-1402H

**Rear Seat Frames**

This is a reproduction rear seat frame which includes the back and bottom. This is a complete replacement for your worn out original springs.

ISF-1402H 1970-72 .....619.95 ea.  
*No Volume Discount. Ships Truck Not eligible for free shipping.*



**Rear Seat Retainer Kit**

This rear seat retainer kit contains all four of the necessary retainers to hold the rear seat of your in place.

IBX-99KR 1970-72 .....22.99 kit  
 BSM-REAR 1970-72 Seat Back Bolts .....9.99 pr.



**Bucket Seat Brackets**

This is a reproduction bucket seat mounting bracket kit which will correctly mount both seats.

IBX-89K 1970-72 All .....42.99 kit  
 IBX-89K-FR 1970-72 All Front/Rear Set.....57.99 kit  
 IBX-RELO All (4pc) Relocation Brackets .....32.95 kit



**Inner Rocker Panels**

Reproduction die stamped inner rocker panels for an exact replacement.

RIP-1489T 1970-72 LH .....54.95 ea.  
 RIP-1489S 1970-72 RH .....54.95 ea.  
 RIP-78L 1978-88 LH .....79.99 ea.  
 RIP-78R 1978-88 RH .....79.99 ea.  
 RIP-5970 1970-72 All Drain Plugs.....6.95 ea.  
 RIP-5970 1970-72 Inner Rocker Drain Plugs .6.95 ea.  
*Ships Oversize. Not eligible for free shipping.*



**Outer Rocker Panels**

Correct gauge stamped steel full outer rocker panels with original mounting points.

RRP-682L 1970-72 LH .....95.95 ea.  
 RRP-682R 1970-72 RH .....95.95 ea.  
 RRP-78L 1978-88 LH .....98.99 ea.  
 RRP-78R 1978-88 RH .....98.99 ea.  
*Ships Oversize. Not eligible for free shipping.*



**Rocker to Cowl Reinforcements**

Heavy gauge rocker to cowl reinforcement panels. Features Weld-Thru primer.

RCR-1419 1970-72 .....142.95 pr.



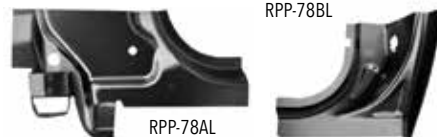
RST-72D

RST-73D

**Shifter Tunnel Pans**

Correct stamped steel hump which was factory installed on all 3 or 4 speed cars.

RST-72D 1970-72 w/ Console.....79.95 ea.  
 RST-72A 1970-72 w/o Console.....79.95 ea.  
 RST-73D 1973-77 All .....69.95 ea.  
 IQ-4015 1978-88 All Plastic.....29.95 ea.



RPP-78AL

RPP-78BL

**Door Jamb Repair Patches**

These patches repair the commonly rusted area at the front and back of the door jamb at the bottom of the A and B pillars.

RPP-78AL 1978-88 LH A-Pillar .....64.99 ea.  
 RPP-78AR 1978-88 RH A-Pillar .....64.99 ea.  
 RPP-78BL 1978-88 LH B-Pillar .....69.99 ea.  
 RPP-78BR 1978-88 RH B-Pillar .....69.99 ea.  
*Fits 2 door only.*



P-2200



P-2000

**Spare Tire Anchor Plates**

Correct spare tire hold down and jack floor brackets.

P-2000 1970-72 Anchor Plate .....9.95 ea.  
 P-2200 1970-72 Jack Bracket.....9.95 ea.

**CROSSMEMBERS, RAILS & BRACES**



RTB-682

**Fuel Tank Braces**

Correct braces that attach to the trunk floor and support the tank straps.

RTB-682 1970-72 LH & RH .....34.95 ea.



RBB-68R

**Trunk Floor Braces**

Correct stamped steel braces that support the trunk floor. All braces include correct cage nuts.

RBB-68L 1970-72 LH .....32.95 ea.  
 RBB-68R 1970-72 RH .....32.95 ea.



**Lower Frame Braces**

Now you can give your Monte Carlo some added strength with this pair of exact reproduction rear frame braces. These braces were originally installed on cars with heavy duty suspensions and were used to stiffen the chassis from the lower rear control arms forward mounting point. These braces help to eliminate breaking of the cross member in high performance applications.

DZ-4500 1970-72 Rear Lower.....79.95 pr..

**CROSSMEMBERS, RAILS & BRACES (CONTINUED)**



RFB-86RR



RFB-87RR

**Above Axle Crossmembers**

Correct steel crossmembers which go under the front of the trunk directly above the rear end.

RFB-86RR	1970 .....	84.95 ea.
RFB-87RR	1971-72 .....	94.95 ea.

*Ships Oversize. Not eligible for free shipping.*



RFB-84F



RFB-85M



RFB-85R

**Floor Pan Braces**

These braces are a must when replacing any parts of your floor pan! These often rusted body braces support the floor pans under the front, middle and rear seats and offer the necessary support. All braces feature correct contours and cage nuts.

RFB-84F	1970-72 Front.....	89.95 ea.
RFB-85M	1970-72 Middle.....	89.95 ea.
RFB-85R	1970-72 Rear.....	94.95 ea.

*Ships Oversize. Not eligible for free shipping.*



**Rear Frame Crossmember**

Ties the back of the frame together.

RFR-68A	1970-72 .....	109.95 ea.
---------	---------------	------------

*Ships Oversize.*



BCN-716

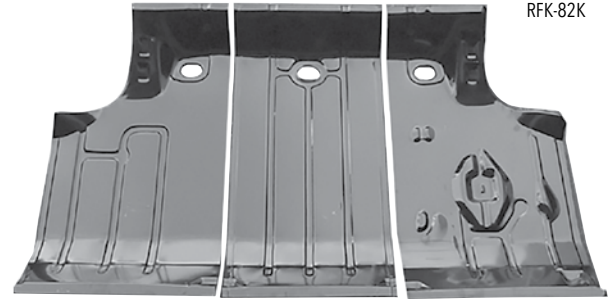
RCH-86L

**Partial Floor Pan Braces**

These partial braces extend approximately 16" from the outboard sides to the driveshaft. Cage nuts are included.

RCH-86L	1970-72 All Front LH.....	52.95 ea.
RCH-86R	1970-72 All Front RH.....	52.95 ea.
RCH-87L	1970-72 All Middle LH.....	52.95 ea.
RCH-87R	1970-72 All Middle RH.....	52.95 ea.
BCN-716	1970-72 All Cage Nut Only.....	8.95 ea.

**TRUNK FLOOR & RELATED**



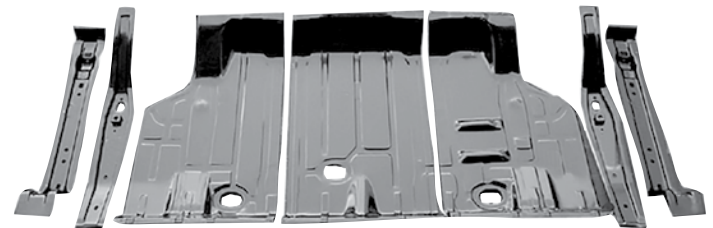
RFK-82K

**Trunk Floor Repair Patches**

These individual trunk floor pieces are perfect when your entire trunk isn't rotted out and also allows you to save on shipping as opposed to a full trunk floor. Buy the set of all 3 and save!

RTF-68L	1970-72 LH.....	52.95 ea.
RTF-68C	1970-72 Center.....	52.95 ea.
RTF-68R	1970-72 RH.....	52.95 ea.
RFK-82K	1970-72 (3 pc.).....	135.02 kit

*No Volume Discount. Ships Oversize. Not eligible for free shipping.*



RTF-682K

**BUY 'N SAVE**  
WITH KITS

**Trunk Floor Kits**

This 7 piece kit includes (3) trunk floor sections, (2) frame braces and (2) fuel tank braces so you can do the job right while saving money.

RTF-682K	1970-72 (7 pc.).....	239.95 kit
----------	----------------------	------------

*No Volume Discount. Ships Oversize. Not eligible for free shipping.*



**Trunk Floor Center Pan**

This is a correct die stamped Monte Carlo center floor section which is perfect when only the center of your trunk floor is rotted out. Features all of the factory lines and contours. Measures 46W x 34L.

RTF-68U	1970-72 .....	99.95 ea.
---------	---------------	-----------

*No Volume Discount. Ships Oversize. Not eligible for free shipping.*



**REAR PANEL**

RPT-3468



**Rear Package Tray Panel**

Features correct details and heavy gauge steel as original. This panel will save you time and money over trying to fabricate patch panels for this commonly rusted out area.

RPT-3468 1970-72 ..... 169.95 ea.  
Oversize 2. Not eligible for free shipping. No Volume Discount.



RFR-78GL



RFR-78GR



RFB-78G

**1978-88 Rear Frame Rails & Floor Pan Repair**

Perfect for repairing the often rotted rear section of the chassis and trunk floor behind the rear wheels.

Partial Replacement Rear Frame Rails.

RFR-78GL 1978-88 2 Door Coupe LH ..... 119.95 ea.  
RFR-78GR 1978-88 2 Door Coupe RH ..... 119.95 ea.

Trunk Floor To Frame Repair Plates

RFB-78G 1978-88 2 Door Coupe ..... 69.95 set  
BCN-788 1978-88 Body Cage Nut Only Fits All ..... 6.99 ea.  
Ships Oversize. Not eligible for free shipping.

**TRUNK & RELATED**



RTG-8A

**Trunk Weatherstrip Gutter**

This trunk weatherstrip gutter set includes both of the metal channels which are required to properly mount your trunk weatherstrip.

RTG-8A 1970-72 ..... 54.95 pr.



RTL-6872



**Trunk Lids**

Reproduction of the often rotted or damaged trunk lid.

RTL-6872 1970-72 Monte Carlo ..... 195.95 ea.  
No Volume Discount. Ships Truck Freight to a commercial address. Not eligible for free shipping.



RWP-682

**Rear Window to Trunk Panel**

Reproduction stamped steel panel which fits between the rear window and the trunk lid.

RWP-682 1970-72 ..... 55.95 ea.  
Ships Oversize 2. Not eligible for free shipping.



RDP-100

**Trunk/Floor Pan Drain Plug**

Correct die stamped floor drain plug.

RDP-100 1970-72 All ..... 3.95 ea.  
RDP-7488 1978-88 All ..... 9.99 ea.



MS149-10

**Eddie Motorsports Billet Trunk Hinges**

These billet trunk hinges are CNC machined from high quality 6061-T6 aluminum. They utilize Nitrogen filled gas struts that replace the stock torsion springs and high quality Delrin bushings for smooth reliable operation. The hinges are designed as direct fit, "bolt on" parts with some minor drilling required for fastening of the strut mount. The hinges come complete with mounting hardware, brackets (where required) and gas struts.

M = Machined  
P = Polished  
R = Red Fusioncoat  
B = Blue Fusioncoat

W = White Fusioncoat  
PR = Purple Fusioncoat  
BK = Gloss Black Fusioncoat  
BKA = Gloss Black Anodized

MB = Matte Black Fusioncoat  
MBA = Matte Black Anodized  
CL = Clear Coat  
CA = Clear Anodized

	<b>M</b>	<b>P</b>	<b>R, B, W, PR, BK, BKA, MB, MBA, CL, CA</b>
MS149-10	1970-72 All ..... 370.99 pr.	405.99 pr.	435.99 pr.



RTH-1489DA

**1970-72 Trunk Hinges**

Reproduction trunk hinges to replace your worn out originals.

RTH-1489DA 1970-72 ..... 149.95 pr.



GWC-SPK

**Trunk Wire Clip**

Correct clips used to hold the power trunk or trunk light wires to the hinge.

GWC-SPK 1970-77 All ..... 13.99 pr.



RLC-1462U

**Trunk Catch (Striker)**

Mounts inside the trunk to catch the trunk latch.

RLC-1462U 1970-72 ..... 18.95 ea.