



Trunk Mats

These new die stamped heavy duty final trunk mats are the perfect finishing touch to your trunk! Constructed of heavy duty vinyl, this mat will last for years to come!

PEM-2221	1964-65 Gray Crowsfoot.....	52.99 ea.
PEM-2222	1966 Gray Crowsfoot	52.99 ea.
PEM-333	1966-67 Gray Houndstooth.....	53.99 ea.
PEM-322	1966-67 Aqua Houndstooth.....	52.99 ea.
PEM-422	1968-69 Aqua Herringbone	52.99 ea.
PEM-522	1970 Aqua Herringbone.....	52.99 ea.
PEM-622	1971-72 Aqua Herringbone	52.99 ea.



Aqua Herringbone



Gray Houndstooth



PEM-161A

Spare Tire Cover

These spare tire covers are constructed of the same durable material as our trunk mats, so they make an excellent finishing touch!

PEM-164A	1964-66 Gray Crowsfoot 14"	55.99 ea.
PEM-167	1966-67 Gray Houndstooth 14"	55.99 ea.
PEM-168	1966-67 Gray Houndstooth 15"	55.99 ea.
PEM-161A	1967 Aqua Houndstooth 14"	55.99 ea.
PEM-162	1967 Aqua Houndstooth 15".....	59.99 ea.
PEM-163A	1968-72 Herringbone 14"	55.99 ea.
PEM-163B	1968-72 Herringbone 15"	55.99 ea.



Gray Crowsfoot



Gray Houndstooth



CTPM-517-5

Custom Trunk Panel Kit

This pre-cut custom trunk panel set makes it easy to clean up your trunk. Each kit includes pre-cut hardboard panels to cover the floor, trunk divider area and the sides of the trunk, saving you or your upholstery shop hours over hand trimming your own custom panels. Add your choice of finishing material such as carpet (not included) and you will have a clean and modern looking trunk to set your muscle car apart from the crowd!

CTPM-515-5	1964-65	194.95 kit
CTPM-516-5	1966-67	194.95 kit
CTPM-517-5	1968-69	194.95 kit
CTPM-518-5	1970-72	194.95 kit

Note: Based on your particular car, you may find it necessary to custom trim here and there depending upon the type of material you choose to cover the panels with. Finishing material is not included. This kit includes the hardboard panels only. Ships Oversize. Not eligible for free shipping.



P-2000



P-2100

P-2200

Spare Tire Anchor Plates

Correct spare tire hold down and jack floor brackets.

P-2000	1964-72 Anchor Plate	9.95 ea.
P-2100	1964-67 Jack Bracket.....	9.95 ea.
P-2200	1968-72 Jack Bracket.....	9.95 ea.



RDP-100

Trunk Floor Drain Plug

Correct stamped plug for trunk floor.

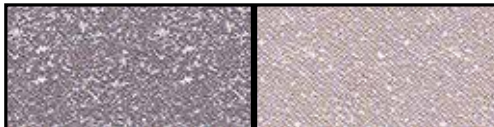
RDP-100	1964-72 All	3.95 ea.
---------	-------------------	----------

Trunk Spatter Paint

Correct OEM aerosol spray to detail your trunk floor.

DUP-DM109	Aqua/Black.....	8.99 ea.
DUP-DM100	Gray/White	8.99 ea.
DUP-DM102	Black/Gray	8.99 ea.
DUP-DAL1695	Clear Coat.....	9.99 ea.

Clear coat must be used to seal paint!



PLW-KIT

Lug Nut Wrench & Sleeve

Correct GM Style lug wrench and rubber sleeve for retaining it to the jack.

PLW-3	1964-72 Wrench.....	14.99 ea.
PLS	1964-72 Sleeve.....	9.99 ea.
BHE-1970	1964-72 Spare Tire Hold Down.....	11.99 set
PLW-KIT	1964-72 Sleeve, Wrench, Hold Down.....	29.58 kit



MBJ-68A



Bumper Jacks

OE style reproduction of this often damaged or missing jack. This kit comes complete with jack, base and load base for bumper.

MBJ-67A	1967 Chevelle.....	137.61 kit
MBJ-68A	1968 Chevelle.....	137.61 kit
MBJ-69A	1969 Chevelle.....	137.61 kit
MBJ-70A	1970 Chevelle.....	137.61 kit
MBJ-71A	1971-72 Chevelle	137.61 kit

**These jacks are for display purposes only and are not intended for use.*



PLB-68A



PLB-70A

Chevelle Jack Load Base

Correct cradle for lifting car which inserts into bumper jack.

PLB-67A	1967.....	26.95 ea.
PLB-68A	1968.....	26.95 ea.
PLB-69A	1969.....	26.95 ea.
PLB-70A	1970.....	26.95 ea.
PLB-712	1971-72	26.95 ea.