

SHIFTERS

SHIFTKIT-350



THIS IS AN EXCLUSIVE GROUND UP PRODUCT

BUY'N SAVE WITH KITS

Console Shifter Kit
Complete kit to convert to an automatic console shifter. Kit includes factory style staple shifter, cable, brackets, & all correct hardware.

| | | |
|--------------|--------------------|------------|
| SHIFTKIT-350 | 1968-72 TH350..... | 199.61 kit |
| SHIFTKIT-400 | 1968-72 TH400..... | 203.86 kit |



Automatic Shifter

Brand new shifter assembly including base, shift handle, shift arm and lever, rubber grommets and clips! Ready to install.

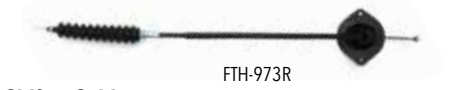
- | | | |
|------------------|------------------------------------|------------|
| ISC-667 | 1966-67 Automatic | 179.95 ea. |
| IE-667 | 1966-67 Boot On Shifter | 15.99 ea. |
| ISH-667A | 1966-67 Handle PG Trans Only | 59.95 ea. |
| ISC-667-200R-700 | Overdrive | 195.95 ea. |
- No Volume Discount.*



4 Speed Overdrive Kits

This kit makes it easy to install a modern overdrive automatic in place of your old Powerglide, TH350 or TH400 for improved performance and gas mileage. Each kit includes a new laser cut and hardened detent, indicator plate, hardware and brackets to allow the use of your factory shifter. This kit works with a TH700, TH200 or 4L60 transmission.

- | | | |
|--------|-------------------|------------|
| SC2041 | 1964-65 All | 119.95 kit |
| SC2042 | 1966-67 All | 119.95 kit |
| SC2242 | 1968-70 All | 99.95 kit |
| SC2243 | 1971-72 All | 99.95 kit |



Shifter Cables

Original GM or high quality reproduction shifter cables for floor mounted TH shifter.

- | | | |
|----------|------------------------------------|-----------|
| FTH-973 | 1968-72 GM | 94.95 ea. |
| FTH-973R | 1968-72 Repro..... | 28.95 ea. |
| FTH-88G | 1982-88 G-Body Shifter Cable | 42.95 ea. |



Shifter Cable Clip

Correct clip for mounting cable.

- | | | |
|--------|--------------------|----------|
| EBC-22 | Mounting Clip..... | 2.99 ea. |
|--------|--------------------|----------|



Shifter Cable Mounting Clip

Correct push-on clip which mounts to shifter.

- | | | |
|---------|---------------------------------|----------|
| FTH-049 | Push-on Clip (to shifter) | 7.99 ea. |
|---------|---------------------------------|----------|



Staple Shifter

Complete staple shifter assembly with chrome plated handle, spring loaded lock out trigger and mounting base. Ready to install.

- | | | |
|---------|------------------------------|------------|
| ISSFT-1 | 1968-72 Console Shifter..... | 139.99 ea. |
| ISH-3X | 1968-72 Handle Only..... | 79.99 ea. |
- No Volume Discount.*



ISSFT-HRDW



Staple Shifter Repair Kit

All the hardware needed to bring a worn out staple shifter back to life.

- | | | |
|------------|-------------------|-----------|
| ISSFT-HRDW | 1968-72 ALL | 32.99 kit |
|------------|-------------------|-----------|
- No Volume Discount.*

SW-DT3



Ratchet Shifter Detent

Converts your factory shifter to a ratchet type shifter. Simple installation.

- | | | |
|--------|--|-----------|
| SW-DT3 | 1968-72 Powerglide, TH350, TH400 | 95.95 ea. |
| SW-DT4 | 1968-72 700-R4, 200-4R, 4L60, 4L65, 4L80 | 95.95 ea. |

TRANSMISSION & RELATED



DIRECT FIT

GForce Transmission Crossmembers

When you need extra exhaust clearance or just want to make your car handle better, these crossmembers are for you!

| | | |
|-----------------|---|------------|
| FCM-RCAE | 1964-67 Coupe TH350, Muncie, PowerGlide, T10, Saginaw..... | 275.99 ea. |
| FCM-RCAE-4 | 1964-67 Coupe TH200R4, TH700R4, Muncie, TH400 Short Tail..... | 275.99 ea. |
| FCM-RCAEC1 | 1964-67 Convertible TH350, Muncie, PowerGlide, T10, Saginaw..... | 275.99 ea. |
| FCM-RCAEC1-400 | 1964-67 Convertible TH200R4, Muncie, TH400 Short Tail..... | 275.99 ea. |
| FCM-RCAE | 1968-72 Coupe TH200R4, Muncie, TH350, TH400 Short Tail..... | 275.99 ea. |
| FCM-RCAE-4 | 1968-72 Coupe 4L80E, 4L85E..... | 275.99 ea. |
| FCM-RCAEC2 | 1968-72 Convertible TH200R4, Muncie, TH350, TH400 Short Tail..... | 275.99 ea. |
| FCM-RCAEC2-4L80 | 1968-72 Convertible 4L80E, 4L85E..... | 275.99 ea. |
| FCM-RCG-350 | 1978-88 TH350..... | 235.99 ea. |
| FCM-RCG-400K | 1978-83 TH200R4 TH400 Short Tail..... | 275.99 ea. |
| FCM-RCG-400 | 1984-88 TH200R4 TH400 Short Tail..... | 235.99 ea. |
| FCM-RCG-700 | 1978-88 TH700R4 4L60E..... | 235.99 ea. |
| FCM-RCG-4L80K | 1978-83 4L60E 6L80E..... | 335.99 ea. |
| FCM-RCG-4L80 | 1984-88 4L60E 6L80E..... | 290.99 ea. |
| FCM-RCG-T56K | 1978-83 T56 6 Speed..... | 315.99 ea. |
| FCM-RCG-T56 | 1984-88 T56 6 Speed..... | 235.99 ea. |

No Volume Discount.



FTB-13433

Column Shift Transmission Bracket

Correct column shift transmission bracket which mounts on all column shift GM cars from 1969-1977.

| | | |
|-----------|--------------|-----------|
| FTB-13433 | 1969-77..... | 11.99 ea. |
|-----------|--------------|-----------|



FCB-222



FCB-322

Shifter Cable Lever Brackets

Correct cable lever brackets which mount to transmission.

| | | |
|---------|-------------------------|-----------|
| FCB-322 | 1964-71 1st Design..... | 19.99 ea. |
| FCB-222 | 1972-77 2nd Design..... | 24.95 ea. |



FCM-88N

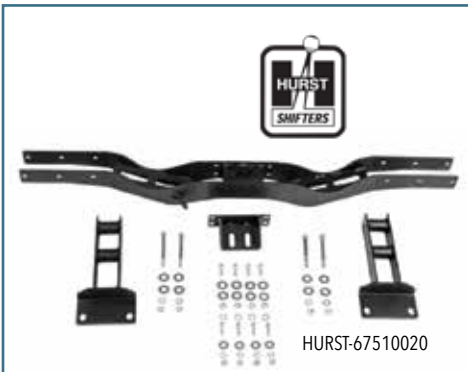


BPC-7000

Transmission Crossmember

Reproduction crossmembers for mounting your transmission.

| | | |
|----------|--------------------------------------|------------|
| FCM-88N | 1968-72 TH350/4 Speed..... | 139.95 ea. |
| BPC-7000 | 1968-72 Mounting Bolts (16 pc.)..... | 6.95 kit |



HURST-67510020

Hurst Transmission Swap Crossmembers

These ultra-trick Hurst transmission crossmembers have painstakingly been designed and fabricated from thick steel plate and heavy gauge steel tubing for a perfect fit and finish that has no equal. These bolt-in units are much stronger than the factory stock crossmembers and help maintain the correct transmission and driveshaft angle. Precision cut and fully MIG-welded, then given a durable black powder coating finish to last a lifetime and give you peace of mind knowing you're buying the best parts available for your Tremec TKO 5-Speed or Magnum 6-Speed conversions. You can surely trust the company that originally started out making conversion mounts back in 1958, Hurst Performance.

| | | |
|----------------|---|------------|
| HURST-67510020 | 68-72 Magnum 6, TKO 5-6, TH350, 400, 700R4..... | 434.99 ea. |
| HURST-67510018 | 78-88 Magnum 6, TKO 5-6, Speed..... | 395.99 ea. |
| HURST-67510019 | 78-83 Magnum 6 Speed Adapter Kit*..... | 137.99 ea. |

No Volume Discount. *Adapter only. Crossmember not included.

NTR-235



Transmission Mounts

| | | |
|----------|---------------------------|-----------|
| NPG-100 | 1964-72 Powerglide..... | 11.95 ea. |
| NTR-235 | 1964-72 TH350/Manual..... | 13.95 ea. |
| NTR-225 | 1964-72 TH400..... | 13.95 ea. |
| BTE-7939 | Mounting Bolt..... | 0.95 ea. |



FCB-220



FCB-1210

Cable Mounting Bracket

Correct bracket for mounting cable to transmission.

| | | |
|----------|--------------------|-----------|
| FCB-1210 | 1968-72 TH350..... | 16.99 ea. |
| FCB-220 | 1968-72 TH400..... | 21.99 ea. |
| FCB-193 | 1974-75 TH400..... | 35.99 ea. |



3-1108G

Poly Graphite Transmission Mount

Poly graphite mounts outlast OEM mounts and are also able to absorb most driveline vibrations.

| | | |
|---------|------------------------|-----------|
| 3-1108G | 1964-88 All Black..... | 36.99 ea. |
| 3-1108R | 1964-88 All Red..... | 36.99 ea. |



FTH-050

Shifter Cable Stud

Correct cable stud which mounts to bracket.

| | | |
|---------|---------------------------------|----------|
| FTH-050 | Mounting Stud (to bracket)..... | 9.99 ea. |
|---------|---------------------------------|----------|



ACC-8555



ATE-2101

Kickdown

Correct kickdown switch for TH400.

| | | |
|-----------|---------------------------------------|-----------|
| ATE-2101 | 1970-72 TH400 Switch..... | 39.99 ea. |
| ACC-8555 | 1970-72 Switch Bracket..... | 19.95 ea. |
| ATE-2101K | 1970-72 TH400 Switch Bracket Kit..... | 54.99 kit |
| 06145 | 1966-67 TH400 Harness..... | 32.99 ea. |
| 11980 | 1968-69 TH400 Harness..... | 33.99 ea. |
| 17565 | 1971-72 TH400 Harness..... | 23.99 ea. |



S530



S531

Kickdown Cable & Bracket

Correct kickdown cable and bracket for cars with a TH350 transmission.

| | | |
|---------|------------------------------|-----------|
| S530KIT | All Cable & Bracket Kit..... | 32.31 kit |
| S530 | All Cable..... | 20.95 ea. |
| S531 | All Bracket..... | 14.95 ea. |

FBC-799



Clutch Pedal Booster Rod & Clip

For use with power disc brakes.

| | | |
|---------|-----------------------|-----------|
| FBC-799 | Booster Rod Clip..... | 6.99 ea. |
| FBF-606 | Booster Rod Fork..... | 14.95 ea. |



FCH-64A



BUY'N SAVE
WITH KITS

Clutch Linkage Kit

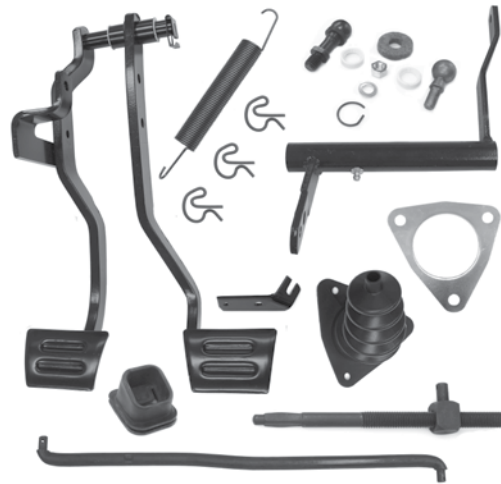
If you're looking to freshen up your original linkage but don't need the pedals, this is perfect!

| | | |
|---------|------------------|------------|
| FCH-64A | 1964-66 SB..... | 159.41 kit |
| FCH-64B | 1964-66 BB..... | 159.41 kit |
| FCH-67A | 1967 All SB..... | 146.70 kit |
| FCH-67B | 1967 All BB..... | 146.70 kit |
| FCH-68 | 1968-72 All..... | 162.88 kit |

No Volume Discount.



FMCK-68

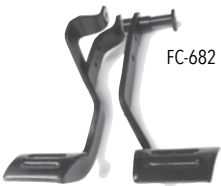


Manual Transmission Conversion Kit

Planning on swapping from automatic to a 4 speed manual? This kit will take the headache out of the switch by providing you with all the parts needed to make your conversion simple! This complete kit includes the brake/clutch pedals, Z bar, rods, boots, cross shaft kit, springs, bracket and all hardware!

| | | |
|------------|---------------------|------------|
| FMCK-64SB | 1964-66 All SB..... | 252.90 kit |
| FMCK-64BB | 1964-66 All BB..... | 252.90 kit |
| FMCK-67ASB | 1967 All SB..... | 252.87 kit |
| FMCK-67ABB | 1967 All BB..... | 252.87 kit |
| FMCK-68 | 1968-72 All V8..... | 247.87 kit |
| FMCK-78G | 1978-88 All..... | 612.99 kit |

No Volume Discount.



FC-682



FCI-88A

Clutch & Brake Pedal Assemblies

Complete reproduction brake/clutch pedals.

| | | |
|----------|------------------------------------|------------|
| FC-646 | 1964-66 All..... | 109.99 ea. |
| FC-67 | 1967 All..... | 109.95 ea. |
| FC-682 | 1968-72 All..... | 99.99 ea. |
| FCI-88A | 1967-72 Auto Brake Pedal..... | 49.99 ea. |
| IBP-628 | 1964-77 Auto Pedal Pivot Pin..... | 14.99 ea. |
| FC-78K | 1978-88 Manual Brake & Clutch..... | 269.99 ea. |
| FC-78C | 1978-88 Clutch Pedal Only..... | 137.99 ea. |
| FC-78B | 1978-88 Brake Pedal Only..... | 137.99 ea. |
| FPS-6816 | 1978-88 Pivot Sleeve*..... | 10.99 ea. |

* One required for automatic transmissions and two for manual.



NT-391A

Back Drive Components

Correct bracket, spring, nylon bushing and mounting bolts that mount to the driver's side frame rail. Provides a pivot point for the automatic on the column shift linkage.

| | | |
|---------|--------------------------------|-----------|
| NT-391A | 1969-72 Complete Kit..... | 27.99 kit |
| NT-Z833 | 1969-72 Bracket Only..... | 16.95 ea. |
| NT-69BU | 1969-72 Bushing Only..... | 5.95 ea. |
| FB-69SP | 1969-72 Back Drive Spring..... | 5.95 ea. |

FPB-97



FPB-103

Clutch Pedal Bushing & Bumper

Correct nylon bushing used for ease of pedal.

| | | |
|----------|------------------------------|-----------|
| FPB-97 | All Bushing..... | 1.99 ea. |
| FPB-103 | All Bumper..... | 3.95 ea. |
| FPS-6810 | 1978-88 Pedal Bump Stop..... | 17.99 ea. |



GCS-S5047

Transmission Cooler Hose Kit

These flexible braided stainless steel transmission cooler hoses fit either single or dual pass cooler set ups. Includes fittings.

| | | |
|-----------|----------|------------|
| GCS-S5047 | All..... | 119.99 kit |
|-----------|----------|------------|

48" hose length.



FDT-350

FDS-3

Dipstick & Tubes

GM replacement dipstick and tubes.

| | | |
|---------|------------------|-----------|
| FDT-350 | TH350 Tube..... | 21.95 ea. |
| FDT-400 | TH400 Tube..... | 29.99 ea. |
| FDS-3 | TH350 Stick..... | 9.95 ea. |
| FDS-4 | TH400 Stick..... | 9.95 ea. |



Transmission Cooler Lines

New reproduction transmission cooling lines with flared ends and correct nuts.

| | | OM | SS |
|---------|--------------------------|-----------|-----------|
| CTC6401 | 1964-65 Powerglide..... | 50.99 ea. | 77.99 ea. |
| CTC6601 | 1966-67 TH350/TH400..... | 50.99 ea. | 77.99 ea. |
| CTC6801 | 1968-72 Powerglide..... | 50.99 ea. | 77.99 ea. |
| CTC6703 | 1968-72 TH350..... | 50.99 ea. | 77.99 ea. |
| CTC6705 | 1968-72 TH400..... | 50.99 ea. | 77.99 ea. |

Ships Oversize. Not eligible for free shipping.



CTV6701

Transmission Vacuum Lines

New reproduction transmission vacuum lines with flared ends and correct nuts.

| | | OM | SS |
|---------|----------------------------|-----------|-----------|
| CTV6401 | 1964 Powerglide V8..... | 29.99 ea. | 40.99 ea. |
| CTV6402 | 1964 Powerglide 6 cyl..... | 29.99 ea. | 40.99 ea. |
| CTV6501 | 1965 Powerglide..... | 29.99 ea. | 40.99 ea. |
| CTV6605 | 1966 396/360 hp TH400..... | 29.99 ea. | 40.99 ea. |
| CTV6703 | 1967-68 TH350 LH Mod..... | 29.99 ea. | 40.99 ea. |
| CTV6701 | 1967-69 Powerglide..... | 29.99 ea. | 40.99 ea. |
| CTV6705 | 1967-69 TH400..... | 29.99 ea. | 40.99 ea. |
| CTV6903 | 1969-72 TH350 RH Mod..... | 29.99 ea. | 40.99 ea. |
| CTV7101 | 1970-72 TH400..... | 29.99 ea. | 40.99 ea. |

Ships Oversize. Not eligible for free shipping.

FLYWHEEL & CLUTCH

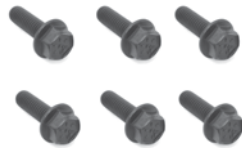
EXCLUSIVE **BUY'N SAVE**
WITH KITS



621 Bellhousing Kit

Complete kit with reproduction "621" bellhousing, clutch fork, fork boot, throwout bearing, bolts and inspection cover. Fits cars with 11" clutch.

| | | |
|-----------------|-----------------------------|------------|
| FBH-621SUPERKIT | Complete Kit | 280.23 kit |
| FBH-621K | Bellhousing and Cover | 185.22 kit |
| FBH-621 | Bellhousing Only | 169.95 ea. |



BPB-9021

Bellhousing Hardware

| | | |
|----------|---|----------|
| BPB-9021 | Bellhousing to Block (6 pc.) | 8.95 kit |
| BTE-307 | Bellhousing to Trans 4 Speed (4 pc.)... | 8.95 kit |



FFW-11

Flywheels

Original GM flywheels.

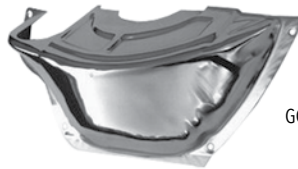
| | | |
|-------------|---------------------------------|------------|
| FFW-105 | 10.5" w/o 454 | 279.99 ea. |
| HAYS-10-010 | 168t 57-85 SBC 65-70 BBC* | 100.99 ea. |
| HAYS-10-020 | 168t SBC 70-90 BBC** | 94.99 ea. |

*Internally balanced. **Externally balanced.

12 Piece Bolts

| | | |
|----------|--|-----------|
| BPB-5116 | 1964-72 Flywheel to Crank 4 Speed ... | 14.99 kit |
| BPB-5118 | 1964-72 Flex Plate to Crank Auto | 16.99 kit |
| BPP-8386 | 1964-72 Flywheel to Pressure Plate | 9.99 kit |

No Volume Discount.



GCS-S9417

Custom Flywheel Inspection Covers

Looks great on any show car!

| | | |
|-----------|----------------------------|-----------|
| GCS-S9417 | PG Chrome | 26.99 ea. |
| GCS-S8607 | TH350/TH400 Polished | 47.99 ea. |
| GCS-S9588 | TH350/TH400 Chrome | 20.99 ea. |
| GCS-S9587 | TH700-R4 Chrome | 27.99 ea. |



FCK-258

Heavy Duty Clutch Kits

All HD clutch kits include clutch disc, pressure plate, throwout bearing, pilot bushing, alignment tool and grease pack.

| | | |
|---------|--------------------------|------------|
| FCK-258 | 11" 10 Spline BB | 210.95 kit |
| FCK-260 | 11" 26 Spline BB | 219.95 kit |
| FCK-105 | 10.5" 10 Spline SB | 199.95 kit |
| FCK-108 | 10.5" 26 Spline SB | 199.95 kit |

No Volume Discount.



NE-810



FTE-3943

Flywheel Inspection Covers

OE style reproduction flywheel covers.

| | | |
|----------|-------------------------------|-----------|
| FTE-3943 | 1964-72 Manual 11" | 24.95 ea. |
| NK-4497 | 1964-72 Manual 10.5" | 23.99 ea. |
| NJ-088 | All Powerglide | 32.95 ea. |
| NE-810 | All TH350 | 34.95 ea. |
| NJ-089 | All TH400 | 93.99 ea. |
| BFW-506K | Attaching Bolts (4 pc.) | 1.95 kit |



FPB-ROLLER



FPB-667

Pilot Bushing

New input shaft bushing that goes into the crankshaft.

| | | |
|------------|--------------------------|-----------|
| FPB-667 | 1964-77 All Brass | 13.95 ea. |
| FPB-ROLLER | 1964-77 All Roller | 21.99 ea. |

FTO-641



Throwout Bearing

Original OEM style throwout bearing.

| | | |
|---------|-------------------|-----------|
| FTO-641 | 1964-77 All | 44.95 ea. |
|---------|-------------------|-----------|



FTE-9000-ADJ



FTE-9000

Clutch Fork Ball

Original GM clutch fork mounting/pivot ball for inside the bellhousing. We also now offer adjustable pivot ball for after market pressure plates where alignment can be an issue.

| | | |
|--------------|--------------------------|-----------|
| FTE-9000 | 1964-77 All | 16.99 ea. |
| FTE-9000-ADJ | 1964-77 Adjustable | 29.95 ea. |

FV-1511



FV-1521



Firewall Boot Retainer

| | | |
|---------|-------------------|-----------|
| FV-1511 | 1964-67 All | 14.95 ea. |
| FV-1521 | 1968-72 All | 14.95 ea. |



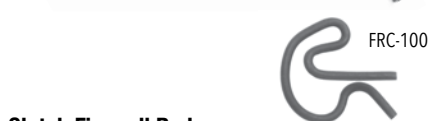
FW-54



FW-35



FW-68



FRC-100

Clutch Firewall Rods

| | | |
|---------|----------------------|-----------|
| FW-54 | 1964-66 All | 29.95 ea. |
| FW-35 | 1967 All | 29.95 ea. |
| FW-68 | 1968-72 All | 29.99 ea. |
| FW-78G | 1978-88 All | 66.99 ea. |
| FRC-100 | Attaching Clip | 1.99 ea. |



FSS-5021



FSS-5053

Firewall Rod Boots

OE style reproduction rubber boots for firewall.

| | | |
|----------|-------------------|-----------|
| FSS-5021 | 1964-67 All | 11.95 ea. |
| FSS-5053 | 1968-72 All | 14.95 ea. |
| FSS-78G | 1978-88 All | 29.99 ea. |



Hays Manual Clutches

Hays Street 450 single disc kits are an excellent upgrade offering up to 30% more holding power over your stock clutch, designed to handle stock and mildly modified engines up to 450 horsepower. This is a great clutch where drivability is the most important factor along with a stock pedal feel.



HAYS-92-1003

| | | |
|--------------|-----------------------|------------|
| HAYS-91-1003 | 10.5" 26 Spline | 304.99 kit |
| HAYS-91-1002 | 10.5" 10 Spline | 301.99 kit |
| HAYS-91-1004 | 11" 10 Spline | 312.99 kit |
| HAYS-91-1005 | 11" 26 Spline | 312.99 kit |

Hays Street 650 single disc kits are designed to handle highly modified naturally aspirated engines up to 650 horsepower. Designed as a true street/strip clutch for spirited high performance driving or frequent track use.

| | | |
|--------------|-----------------------|------------|
| HAYS-92-1003 | 10.5" 26 Spline | 604.99 kit |
| HAYS-92-1002 | 10.5" 10 Spline | 582.99 kit |
| HAYS-92-1004 | 11" 10 Spline | 620.99 kit |
| HAYS-92-1005 | 11" 26 Spline | 614.99 kit |

No Volume Discount.



HAYS-10-010

Hays Automatic Flexplate

Hays heavy duty Flexplate for high performance competition Chevy engines are constructed of a thicker than stock steel plate. This enables them to withstand the stress of high-stall torque converters and high-RPM engines. These flexplates are supplied with a ring gear that is securely welded in place and feature a dual bolt pattern for use with a Powerglide or Turbo style torque converter.

| | | |
|-------------|---------------------------------|------------|
| HAYS-10-010 | 168t 57-85 SBC 65-70 BBC* | 100.99 ea. |
| HAYS-10-020 | 168t SBC 70-90 BBC** | 94.99 ea. |

*Internally balanced. **Externally balanced.
No Volume Discount.



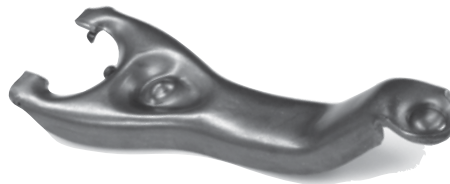
LW-15000LKW



FKW-11LW



FKW-4999



FEH-397

Lakewood Bellhousing

The Lakewood 15000LKW bellhousing connects Chevy small and big block engines to transmissions utilizing the standard GM pattern such as the Muncie, Saginaw, Borg Warner T10 and Tremec TKO transmissions. This bellhousing is hydro formed to fit '58-'87 GM full and midsize cars, 67-81 F-body vehicles and 68-79 Novas. This bellhousing is S.F.I. 6.1 certified which is required by many sanctioning bodies for cars running 11.49 or faster in the quarter mile. The Lakewood 15000 comes complete with engine block plate and Grade 8 mounting hardware.

| | | |
|--------------|---|------------|
| LW-15000LKW | 1964-1977 SBC, BBC | 552.99 ea. |
| FEH-397 | 1964-72 All Resto Clutch Fork | 52.99 ea. |
| FKW-4999 | 1964-75 All Clutch Fork Boot | 8.95 ea. |
| FKW-11LW | 1964-1977 All Clutch Fork Boot | 32.99 ea. |
| FTE-9000-ADJ | 1964-1972 All Adjustable Clutch Fork Ball | 29.95 ea. |

No Volume Discount.



BM-20230

B&M Automatic Flexplate

Heavy duty flexplate for extreme racing or street applications. SFI certified for NHRA & IHRA.

| | | |
|----------|-------------------------------------|------------|
| BM-20230 | 55-85 168t SBC up to 1991 BBC | 116.99 ea. |
| BM-20232 | 55-85 168t SBC 400 | 124.99 ea. |
| BM-20233 | 55-85 168t BBC 454 | 113.99 ea. |
| BM-20232 | 55-85 153t SBC | 124.99 ea. |

*Except SBC 400 and BBC 454. No Volume Discount.

CLUTCH & RELATED



FEH-397

Clutch Fork

New GM style clutch fork.

| | | |
|------------|------------------------------|------------|
| FEH-397 | 1964-72 All Resto | 52.99 ea. |
| FEH-397-GM | 1964-72 All Original GM..... | 105.99 ea. |



FB-564

FB-566

Clutch Frame Brackets

Correct bracket for mounting Z bar to frame.

| | | |
|---------|---------------------|-----------|
| FB-564 | 1964-67 All | 13.95 ea. |
| FB-566 | 1968-72 All | 18.95 ea. |
| FB-78G | 1978-88 All | 36.99 ea. |
| BFB-605 | Attaching Bolt..... | 0.75 ea. |



FKW-209

FCE-0681

Clutch Adjustment Rod Kits

| | | |
|----------|----------------------|-----------|
| FKW-209 | 1964-67 All V8 | 19.99 kit |
| FCE-0681 | 1968-72 All V8 | 19.99 kit |
| FRC-100 | Attaching Clip..... | 1.99 ea. |



FKW-4999

Clutch Fork Boot

Original clutch fork dust boot.

| | | |
|----------|-------------------|----------|
| FKW-4999 | 1964-75 All | 8.95 ea. |
|----------|-------------------|----------|



FRB-172

Clutch Pedal Push Rod Bushing

This injection molded plastic bushing installs on the clutch pedal and retains the clutch push rod.

| | | |
|---------|---------------|----------|
| FRB-172 | 1973-75 | 1.99 ea. |
|---------|---------------|----------|



FZ-3525



FZ-3520



FRZ-19

Clutch Z Bar

Reproduction "zerk" bar.

| | | |
|---------|-------------------|------------|
| FZ-3525 | 1964-67 SB | 32.95 ea. |
| FZ-3520 | 1964-67 BB | 32.95 ea. |
| FRZ-19 | 1968-72 All | 39.99 ea. |
| FZ-78G | 1978-88 All | 147.99 ea. |

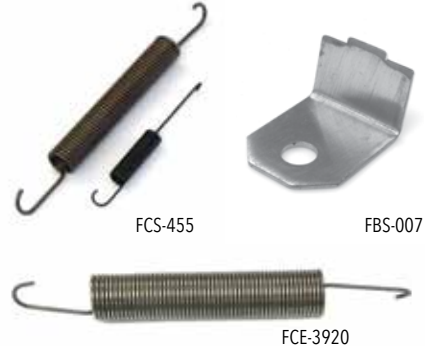
FPX-828



Clutch Cross Shaft Kit

Original GM stud balls, nylon seats, protective felts, retaining clips, nuts and washers.

| | | |
|----------|----------------------------------|-----------|
| FPX-828 | 1964-72 | 29.95 kit |
| FPX-6568 | Block Ball Only | 13.95 ea. |
| FPX-5289 | Frame Ball Only | 20.99 ea. |
| FPX-3349 | Plastic Seat Only..... | 2.95 ea. |
| FPX-3360 | Ball Felt | 12.99 ea. |
| FPX-0696 | Retaining Clip | 1.99 ea. |
| FPX-33K | Cross Shaft Seat & Seal Kit..... | 29.46 kit |



FCS-455

FBS-007

FCE-3920

Clutch Return Springs

Original return springs for clutch fork, etc.

| | | |
|----------|--------------------------------|-----------|
| FCS-455 | 1966-67 All | 17.95 pr. |
| FBS-007 | 1966-67 Firewall Bracket | 14.95 ea. |
| FCE-3920 | 1968-72 All | 6.95 ea. |
| FCS-78G | 1978-88 All | 15.99 ea. |

FHB-64



Muncie - Hurst Adapter

This handy bracket allows you to bolt up your original Muncie shifter handle to a Hurst shifter. The original Muncie handle featured a top mount design while the Hurst handle features a side mount design. The Hurst design is much stronger. Once your shifter boot is on, no one will know it isn't stock!

| | | |
|--------|---------------|-----------|
| FHB-64 | 1964-67 | 26.95 ea. |
|--------|---------------|-----------|



Hurst Shifter & Installation Kit

This complete Hurst Competition Plus shifter and linkage kit includes a famous Hurst Competition Plus shifter, chrome Hurst shifter handle and white shifter ball with 4 speed pattern as well as a complete Hurst installation kit with all rods, levers, swivels and hardware. This kit will provide you with that vintage muscle car look as well as provide reliable shifts every time!

| | | |
|---------------|----------------------|------------|
| HURST-KITA64M | 1964-67 Muncie | 528.20 kit |
| HURST-KITA68M | 1968 Muncie | 537.20 kit |
| HURST-KITA69M | 1969-72 Muncie | 555.83 kit |

Part Notes: Please verify that the year of your transmission matches the year of your car before ordering. 1964 to 1968 Muncie 4-speed transmissions can be identified from later models by the way the transmission arms attach. Early Muncie side covers had a stud and the shift arm attached with a nut on the stud while the 1969 and later model side covers had a hole and the shift arms attached with a bolt.

Hurst/Muncie Shifter Kit
This Ground Up exclusive Hurst/Muncie shifter kit allows you to keep an original style Muncie shifter handle and mate it to a Hurst shifter and linkage. Original Muncie shifters performed very poorly, so we created this exclusive kit to keep your car looking original while utilizing the strength and reliability of a bullet proof Hurst Competition Plus shifter. Everything under the shifter handle is covered by your shifter boot so no one will be able to tell it isn't stock.

| | | |
|---------|--|------------|
| FHM-64 | All 1964-67 w/ Bench..... | 565.96 kit |
| FHM-64K | All 1964-66 w/ Buckets..... | 606.41 kit |
| FHM-67K | All 1967 w/ Buckets..... | 606.41 kit |
| FHM-68K | All 1968 w/ Console and/or Buckets..... | 631.69 kit |
| FHM-68 | All 1968 w/ Bench..... | 628.99 kit |
| FHM-69K | All 1969-72 w/ Console and/or Buckets..... | 631.69 kit |
| FHM-69 | All 1969-72 w/ Bench..... | 628.99 kit |

No Volume Discount.

TWE
NT-390

Reverse Lockout Kit
Complete with 2 rods and swivel mechanism.

NT-390 1969-72 w/ Muncie89.95 kit

3737834

Hurst Installation Kits
Complete kit with rods, levers, swivels and hardware.

| | | |
|---------|-------------------------|------------|
| 3733163 | 1964-67 w/ Muncie | 218.99 kit |
| 3734297 | 1966-67 w/ Saginaw..... | 228.99 kit |
| 3733163 | 1968 w/ Muncie..... | 218.99 kit |
| 3737919 | 1968-72 w/ Saginaw..... | 230.99 kit |
| 3737834 | 1969-72 w/ Muncie | 218.99 kit |
| 3737897 | 1973-74 w/ Muncie | 256.99 kit |

No Volume Discount.

FZ-1400 FZ-1420 FW-157

Shifter Balls
Reproduction shifter balls.

| | | |
|------------|-------------------------------------|-----------|
| FZ-1300 | 1964-67 White Bench..... | 35.95 ea. |
| FZ-1400 | 1964-67 Chrome | 24.95 ea. |
| FZ-1420 | 1968-72 White 5/16"..... | 21.99 ea. |
| FZ-1424 | 1968-72 White 3/8"..... | 27.99 ea. |
| FW-38HURST | White 3/8" 4 Speed Hurst Logo | 38.99 ea. |
| FW-115 | Chrome 5/16" | 24.99 ea. |
| FW-117 | Chrome 3/8" | 23.99 ea. |
| FW-157 | Black/Chrome 5/16"..... | 21.99 ea. |
| FW-159 | Black/Chrome 3/8"..... | 21.99 ea. |

3917308

Hurst Shifters
New Hurst Competition Plus shifter complete with Hurst handle and shifter ball.

| | | |
|---------|-------------------------|------------|
| 3917308 | 1964-67 w/ Muncie | 406.28 ea. |
| 3917307 | 1966-67 w/ Saginaw..... | 414.99 ea. |
| 3918014 | 1968-72 w/ Muncie | 406.28 ea. |
| 3916848 | 1973-74 w/ Muncie | 414.99 ea. |
| 3918794 | 1978-79 w/ Saginaw..... | 414.99 kit |

No Volume Discount.

SH-203-8 SH-202-8 SH-204-10

Billet Shifter Handles
These billet aluminum shifter handles from Clayton Machine work with any Hurst or Tremec, TK500 TKO600 2 bolt shifter mount and are a great finishing touch for your custom ride! Available in three styles: Basic black anodized, truss style with gray powder coat, truss style adjustable gray powder coat. Shift knob not included. Requires knob with 3/8-16" thread. Same as most Hurst knobs.

| | | |
|-----------|---|------------|
| SH-203-8 | 8" Black Anno 30 Degree Kick Back | 169.99 ea. |
| SH-203-10 | 10" Black Anno 30 Degree Kick Back..... | 175.99 ea. |
| SH-202-8 | 8" Gray PC Truss Style 30 Degree Kick Back | 132.99 ea. |
| SH-202-10 | 10" Gray PC Truss Style 30 Degree Kick Back..... | 137.99 ea. |
| SH-204-10 | 10" Gray PC Truss Style Adjustable Kick Back..... | 228.99 ea. |

No Volume Discount.

FSH-1498

FRZ-5134

1964-72 Muncie Shifter Handles
OE style reproduction chrome shifter handles.

| | | |
|----------|---------------------------|------------|
| FRZ-5134 | 1964-67 Bench..... | 99.95 ea. |
| FRZ-5133 | 1964-66 Buckets..... | 119.95 ea. |
| FRZ-5131 | 1967 Buckets..... | 119.95 ea. |
| FSH-1498 | 1968-72 w/o Console | 79.95 ea. |
| FSH-1499 | 1968-72 w/ Console | 79.95 ea. |



BM-80675



BM-80706



BM-80690



BM-80840



HURST-3838530



HURST-3160001



B&M Automatic Floor Shifters

From the originator of high performance manual shifters our line of performance, street and racing shifters for automatic transmissions won't let you down. With classic good looks and proven mechanical designs giving choices of either positive ratcheting actions or gated racing shifters, provide positive shifts guaranteeing you won't miss a shift when it counts.

Starshifter

Features include NHRA/ IHRA reverse lockout, backup light switch, neutral safety switch, polished T-handle. Cable operated for quick installation and accurate shifting.

BM-80675 All 2&3 Speed 238.99 ea.

Megashifter

The B&M Megashifter has it all, form, function and classic style. This all adds up to bring you a quality shifter that's been one of the most popular automatic shifters of all time. First off let's talk function. The Megashifter's positive ratcheting function won't allow you to over shift and miss a gear at that critical moment, along with the reverse lockout feature meets NHRA/IHRA safety rules for those weekend grudge races at the track. The look and feel of the T-handle and accordion style shift boot really shows off the racing heritage of the Megashifter.

BM-80690 All 2,3,4 Speed 384.99 ea.

Quicksilver

The B&M Quicksilver features a ratcheting action for positive shifts, chrome knob, neutral safety switch, NHRA/IHRA approved reverse lockout.

BM-80683 All 2,3,4 Speed 348.99 ea.

Hammer

The Hammer shifter may just be the most comfortable and versatile shifter available. The unique design of the shift handle easily fits all sizes of hands providing the best wrist angle and feel when shifting.

BM-80885 All 2,3,4 Speed 263.99 ea.

Pro Stick

The Original Pro Stick shifter delivers rock-solid performance, mixed with clean design cues and compact size. This is why you see so many Pro Stick shifters at the race track.

BM-80706 All 2,3,4 Speed 338.99 ea.

Stealth Magnum Pro Stick

The Stealth Magnum Grip Pro Stick shifter delivers rock-solid performance, mixed with clean design cues and compact size.

BM-81052 All 2,3,4 Speed 322.99 ea.

Pro Ratchet

The Pro Ratchet shifter is one of our most popular and easiest to operate race shifters. Features include a positive ratcheting design that self-centers the handle after each shift giving you maximum clearance behind the shifter and won't allow you to miss a shift by over-shifting a gear. This versatile shifter will operate both forward and reverse shift patterns.

BM-80840 All Silver 2 Speed Powerglide 341.99 ea.

BM-80842 All Silver 3,4 Speed* 341.99 ea.

BM-80843 All Carbon 3,4 Speed* 344.99 ea.

BM-81120 All Stealth 3,4 Speed* 427.99 ea.

*May require PRNDL switch for some applications. No Volume Discount.

Hurst Automatic Shifters

From the originator of high performance manual shifters, is our line of performance street and racing shifters for automatic transmissions that won't let you down. With classic good looks and proven mechanical designs giving choices of either positive ratcheting actions, or gated racing shifters providing positive shifts guaranteeing you won't miss a shift when it counts.

Pro-Matic 2

Ratchet-action shifter with its chrome-plated stick and black knob is quality engineered for years of precise, trouble-free operation. Once the shifter is installed, the textured console and brilliant top cover that can be trimmed to fit any floor contour integrates the shifter with the interior.

HURST-3838500 All 3 Speed 327.99 ea.

V-Matic 3 Shifter

Designed with a park and reverse lock trigger actuating system that allows smooth and flawless ratcheting through the forward gears.

HURST-3838530 All 3 & 4 Speed 381.99 ea.

Quarter Stick

The Quarter Stick shifter provides positive gear change control for both street and race applications. Its compact size fits easily in racecars with limited space and is very lightweight at only 2.5 pounds. Features include black oxide coated steel construction, 1018 hardened steel gate plate, forged aluminum shift stick with 7/16-20 tpi and a classic white Hurst shift knob.

HURST-3160001 All 2 Speed* 329.99 ea.

HURST-3160006 All 3 Speed** 329.99 ea.

HURST-3160020 All 3 Speed* 332.99 ea.

*Reverse valve body. **Forward valve body.



FW-HURST

Hurst T Handle Shifter Knob

This brushed aluminum t-handle provides a positive feel for accurate gear selection. A favorite in the performance world for years! Includes adapters for most popular shift handles.

FW-HURST T-Handle 38.99 ea.



HURST-5389020



HURST-5389023

Hurst Billet Shifter Handles

This is a great way to add a contemporary performance look to your muscle car. Billet Aluminum construction is precision CNC machined for a modern look and feel. Fits classic Hurst shifters with a 2 bolt pattern.

| | | |
|---------------|-------------------|------------|
| HURST-5389020 | 6" Straight..... | 85.99 ea. |
| HURST-5389021 | 8" Straight..... | 96.99 ea. |
| HURST-5389022 | 10" Straight..... | 109.99 ea. |
| HURST-5389023 | 6" Lay Back..... | 96.99 ea. |
| HURST-5389024 | 8" Lay Back..... | 109.99 ea. |
| HURST-5389025 | 10" Lay Back..... | 132.99 ea. |

No Volume Discount.



ICE-HURST



ICE-INDY

Hurst Shifter Boots

Brand new injection molded boots.

ICE-HURST Universal 62.99 ea.
ICE-INDY Universal Indy Shift Boot..... 28.99 ea.

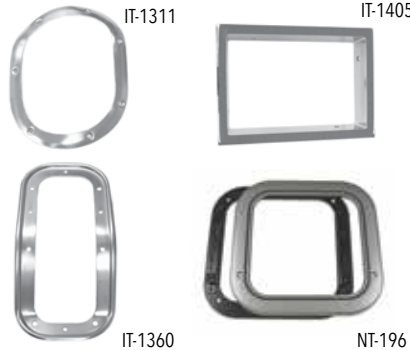
THIS IS AN EXCLUSIVE GROUND UP PRODUCT

IT-1360K

BUY'N SAVE WITH KITS

Boot & Retainer Kit
Buy a correct shift boot and retainer for your 1968-72 Chevelle with console and save!!!

IT-1360K 1968-72 w/ Console..... 32.22 kit



Shift Boot Retainers

Correct die stamped steel boot retainers.

| | | |
|---------|----------------------------------|-----------|
| IT-1311 | 1964-66 All..... | 17.95 ea. |
| IT-1405 | 1966-67 Console..... | 39.95 ea. |
| IT-1360 | 1968-72 Console..... | 18.95 ea. |
| NT-196 | 1968-72 w/o Console (2 pc.)..... | 69.95 ea. |
| IT-3954 | 1978-88 w/o Console..... | 34.99 ea. |

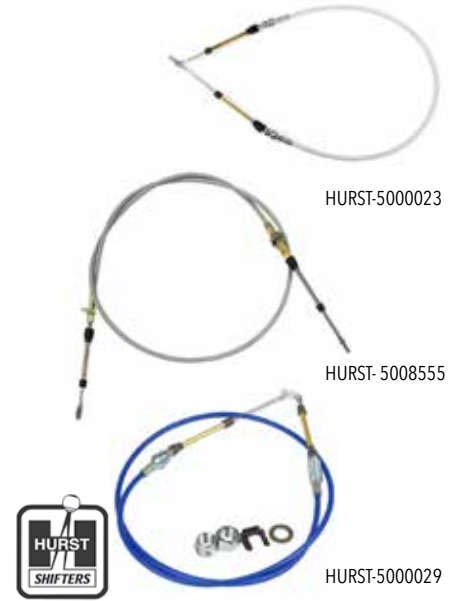


Shifter Boots

Brand new injection molded boots.

| | | |
|----------|----------------------------|-----------|
| IM-780 | 1964-65 Console Upper..... | 8.95 ea. |
| IE-384 | 1964-67 Lower Console..... | 19.95 ea. |
| IE-384 | 1964-66 w/o Console..... | 19.95 ea. |
| IE-390 | 1966-67 Upper Console..... | 22.95 ea. |
| ICE-5356 | 1968-72 w/ Console..... | 18.95 ea. |
| ICE-5405 | 1968-72 w/o Console..... | 21.95 ea. |
| IE-4010 | 1978-88 w/o Console..... | 52.99 ea. |

DRIVETRAIN ACCESSORIES



HURST-5000023

HURST-5008555

HURST-5000029



Hurst Shifter Cables

These premium quality cables feature a solid 303 stainless steel inner wire core encased within a nylon liner wrapped with helical lay wires and swaged ends for superior strength. The core is lubricated with Teflon prior to assembly and then sealed in a heavy plastic outer casing for a lifetime of durability and smooth operation.

Single eyelet on one end and threaded on the other end.

| | | |
|---------------|-------------|-----------|
| HURST-5000023 | 3 Feet..... | 74.99 ea. |
| HURST-5000025 | 5 Feet..... | 70.99 ea. |
| HURST-5000028 | 8 Feet..... | 90.99 ea. |

Single eyelet on one end and threaded on the other end. For Pro-Matic & V-Matic shifters

| | | |
|---------------|-------------|-----------|
| HURST-5008555 | 5 Feet..... | 67.99 ea. |
|---------------|-------------|-----------|

Eyelets on both ends for quarter stick.

| | | |
|---------------|-------------|-----------|
| HURST-5000029 | 5 Feet..... | 79.99 ea. |
|---------------|-------------|-----------|

No Volume Discount.



Speedometer Cables

New complete cables with casings and correct ends ready to install.

1964-68 Cables came with screw on fittings on both ends. 1969 and up cables had a screw end on the transmission and a clip on end on the speedometer. Check your speedometer fitting and length before ordering.

| | | |
|---------|--|-----------|
| FCC-201 | 1964-68 64" LH (Screw on both)..... | 18.95 ea. |
| FCC-203 | 1964-68 83" RH (Screw on both)..... | 18.95 ea. |
| FCC-202 | 1969-77 100" (Clip on speedo end)..... | 18.95 ea. |
| FCC-205 | 1969-77 80" (Clip on speedo end)..... | 18.95 ea. |
| FCC-305 | 1969-77 61" (Clip on speedo end)..... | 18.95 ea. |
| FCC-309 | 1969-77 41" (Clip on speedo end)..... | 18.95 ea. |
| FSG-22 | 1964-72 Grommet..... | 7.95 ea. |
| FSG-78G | 1978-88 All Grommet..... | 15.99 ea. |

Note: Longer cables are for cars with passenger side screw ins on transmission.



GNS-13



GNS-35



GDR-411

Neutral Safety Switch

Correct steering column switch for proper engine and reverse light activation.

| | | |
|---------|---------------------------|-----------|
| GNS-13 | 1964-66 PG Column | 22.99 ea. |
| GNS-23 | 1965-66 TH Column | 21.99 ea. |
| GNS-696 | 1967 Auto Console | 61.99 ea. |
| GNS-33 | 1969-72 Manual..... | 49.99 ea. |
| GDR-411 | 1968-72 Auto Console..... | 21.95 ea. |
| GNS-35 | 1969-73 Auto Column | 21.99 ea. |



GNS-2248



GNS-1588

Neutral Start Switch

Correct safety switch located at pedal which prevents your car from being started in gear.

| | | |
|----------|-----------------------|-----------|
| GNS-2248 | 1969 4 Speed | 69.99 ea. |
| GNS-1588 | 1970 4 Speed | 52.99 ea. |
| GNS-1589 | 1971-72 4 Speed | 49.95 ea. |



1993661



1993307

Reverse Lamp Switch

Correct switch assembly for activating reverse lamps.

| | | |
|---------|-------------------------|-----------|
| 1993661 | 1964 All Manual | 69.99 ea. |
| 1993307 | 1965-68 All Manual..... | 69.99 ea. |



19240



10665

Reverse Switch Extension Harness

Correct harness which plugs into firewall.

| | | |
|-------|-------------------------|-----------|
| 05100 | 1964 All Manual | 23.99 ea. |
| 19240 | 1965 All Manual | 23.99 ea. |
| 10665 | 1966-68 All Manual..... | 26.99 ea. |



FHB-13653

Speedometer Cable Clip

Bolts to the bottom of the transmission tail shaft bolt to keep the speedometer cable from hanging down.

| | | |
|-----------|----------------------|-----------|
| FHB-13653 | 1970-79 4 Speed..... | 14.99 ea. |
|-----------|----------------------|-----------|



BM-70264



B&M Transmission Coolers & Kits

B&M Super Coolers are 100% aluminum stacked plate style core which is ideal for additional transmission cooling. With oven brazed construction this sturdy cooler design is practically impervious to flying rocks or other debris.

Small

| | | |
|----------|------------------------------|------------|
| BM-70265 | All 7,500 BTU Polished | 102.99 ea. |
| BM-70273 | All 15,000 BTU Black..... | 93.99 ea. |

Medium

| | | |
|----------|-------------------------------|------------|
| BM-70268 | All 13,000 BTU Black..... | 94.99 kit |
| BM-70266 | All 20,500 BTU Black..... | 128.99 ea. |
| BM-70272 | All 20,500 BTU Polished | 176.99 ea. |

Large

| | | |
|----------|---------------------------|------------|
| BM-70264 | All 14,400 BTU Black..... | 112.99 kit |
| BM-70274 | All 29,200 BTU Black..... | 155.99 ea. |

No Volume Discount.



BM-70298

B&M HiTek Cooling Systems

Hi-Tek Super Coolers are fitted with a high quality 12 Volt electric fans and built-in mounting brackets which makes it ideal for maximum cooling. Suitable for many fluids including ATF, Engine Oil, Differential Oil and power steering fluid.

| | | |
|----------|-------------------------|------------|
| BM-70298 | All 350 CFM Black | 348.99 ea. |
| BM-70297 | All 590 CFM Black | 384.99 ea. |

No Volume Discount.



BM-20248



B&M Governor Recalibration Kit

This kit allows you to adjust the shift points of your transmission after it is installed in your vehicle. The Governor Recalibration Kit is very useful if you have a vehicle that is very light; has a low rear-end gear ratio.

| | | |
|----------|----------------------------------|-----------|
| BM-20248 | 55-85 TH350, TH400, TH700R4..... | 85.99 kit |
|----------|----------------------------------|-----------|

No Volume Discount.



Muncie M20, M21, M22



TH350, TH400

Transmission Speedometer Gears

These are the correct speedometer drive gears which go inside the transmission case. Please compare the gear you have to what you are ordering as the color or tooth count may vary from original. We do not have an application chart for these so if changing axle ratios or tire size please consult various online resources.

Muncie M20, M21, M22

Saginaw 3 & 4 Speed and Powerglide

| | | |
|----------|------------------|-----------|
| FR-158RB | 17 Tooth Purple | 16.95 ea. |
| FR-158RD | 18 Tooth Brown | 16.95 ea. |
| FR-158RF | 19 Tooth Natural | 16.95 ea. |
| FR-158RH | 20 Tooth Blue | 16.95 ea. |
| FR-158RK | 21 Tooth Red | 16.95 ea. |
| FR-158RM | 22 Tooth Gray | 16.95 ea. |
| FR-158RS | 23 Tooth Black | 16.95 ea. |
| FR-158RV | 24 Tooth Orange | 16.95 ea. |

TH350, TH375, TH400, TH475

| | | |
|----------|----------------------|-----------|
| FR-158SD | 36 Tooth White | 16.95 ea. |
| FR-158SF | 37 Tooth Red | 19.95 ea. |
| FR-158SH | 38 Tooth Blue | 16.95 ea. |
| FR-158SM | 40 Tooth Black | 16.95 ea. |
| FR-158SP | 41 Tooth Yellow | 16.95 ea. |
| FR-158SS | 42 Tooth Green | 16.95 ea. |
| FR-158SV | 43 Tooth Purple | 16.95 ea. |
| FR-158SX | 44 Tooth Dark Gray | 16.95 ea. |
| FR-158SZ | 45 Tooth Light Green | 16.95 ea. |



BM-30229

B&M Transpak, Transkit & Master Overhaul Kits

B&M Transpak has all the features in the Shift Improver Kit, plus it provides additional driver manual control. Retain full automatic features and standard shift points with selector in Drive.

| | | |
|----------|---------------|------------|
| BM-30228 | 1968-81 TH350 | 100.99 ea. |
|----------|---------------|------------|

B&M Transkits give you the same high-quality components that are used in all B&M Street and Strip transmissions. They also include special directions on how to modify your case, pump, and components.

| | | |
|----------|---------------|------------|
| BM-30229 | 1968-81 TH350 | 294.99 ea. |
|----------|---------------|------------|

B&M Master Racing overhaul kits are supplied with all of the gaskets, seals, bushings, and friction material required for a complete high performance or racing trans overhaul.

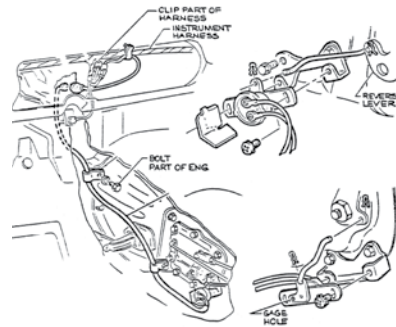
| | | |
|----------|---------------|------------|
| BM-21042 | 1968-81 TH350 | 249.99 kit |
| BM-21041 | 1968-81 TH400 | 270.99 kit |

No Volume Discount.

REVSKIT-64



BUY 'N SAVE WITH KITS



Reverse Switch Kit

This kit includes all components needed for a complete installation: switch, extension harness, bracket, shield and rod.

| | | |
|-------------|--------------------|------------|
| REVSKIT-64 | 1965-66 All Manual | 123.24 kit |
| REVSKIT-65 | 1965 All Manual | 123.24 kit |
| REVSKIT-668 | 1967-68 All Manual | 125.94 kit |

No Volume Discount.



39504

Reverse Switch Mounting Kit

Complete with bracket, shield, rod, clips and hardware for mounting the reverse switch.

| | | |
|---------|--------------------------|-----------|
| 39504 | 1964-68 Manual | 42.95 kit |
| GRB-342 | 1964-68 All Bracket Only | 14.95 ea. |
| GWT-17 | Shield | 9.95 ea. |
| GRR-58 | Rod w/ Clips | 17.95 ea. |



REVSKIT-UNI

Universal Reverse Lamp Switch Manual

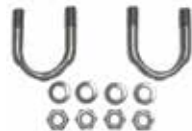
This kit allows you to add a reverse light switch to non-stock applications. If you have a Hurst shifter this kit is a must.

| | | |
|-------------|-----|-----------|
| REVSKIT-UNI | All | 40.99 ea. |
|-------------|-----|-----------|

BPU-337



BPU-334



U Joint Attaching Kits

Correct straps and bolts for attaching the drive shaft to rear yoke.

| | | |
|---------|---------------------|-----------|
| BPU-337 | All Straps w/ Bolts | 15.99 kit |
| BPU-334 | All U Bolts w/ Nuts | 16.99 kit |



FTS-350

Tail Seals

Correct tail shaft yoke seals.

| | | |
|---------|------------|-----------|
| FTS-PG | Powerglide | 5.99 ea. |
| FTS-350 | TH350 | 5.95 ea. |
| FTS-400 | TH400 | 10.95 ea. |



BSB-12925

Tail Shaft Bolts

Correct TR head markings & black phosphate plating.

| | | |
|-----------|--------------------------|----------|
| BSB-12925 | PG, TH350, TH400 (6 pc.) | 9.99 kit |
|-----------|--------------------------|----------|



FY-935

Yokes

New front drive shaft & rear differential yokes.

| | | |
|--------|--------------------------|-----------|
| FY-123 | Front Yoke TH400 | 99.99 ea. |
| FY-935 | Front Yoke TH350/4 Speed | 99.95 ea. |



ATS-21MP

ATS-21MS

TCS Transmission Switches

Correct TCS switch located on transmission.

| | | |
|----------|---------------------|-----------|
| ATS-21MP | 1970-75 Pin Style | 32.95 ea. |
| ATS-21MS | 1970-75 Spade Style | 32.95 ea. |



UMI-4500-B

UMI Driveshaft Safety Loops

This one-piece NHRA legal driveshaft safety loop is a bolt-in or weld-in application for your Chevelle. This driveshaft loop is contoured for the A-Body floor pan and bolts or welds into the reinforcement rib located behind the transmission. This is a must for tracks that require a safety loop for cars running faster than 13.99 in the quarter mile. The entire loop is constructed of 0.250 thick mild steel, CNC machined mounting points for a superb fit and fully MIG welded for outstanding strength.

| | | |
|------------|-------------------|-----------|
| UMI-4500-B | 1964-72 All Black | 79.99 kit |
| UMI-4500-R | 1964-72 All Red | 79.95 kit |
| UMI-3500-B | 1978-88 All Black | 79.95 kit |
| UMI-3500-R | 1978-88 All Red | 79.95 kit |



GCS-S7120

Universal Driveshaft Loop

| | | |
|-----------|-----------|-----------|
| GCS-S7120 | Universal | 28.99 ea. |
|-----------|-----------|-----------|



Turbo HydraMatic Transmission ID Tags

Turbo HydraMatic transmission ID tag with rivet, measuring 1-1/8 inch x 1-15/16 inch. This installs on the side of the transmission case with the rivet. You must punch your own info onto the tag.

| | | |
|----------|-----------------------------|-----------|
| TTP-68 | 1968 Dark Olive | 29.99 ea. |
| TTP-6972 | 1969 & 72 Only Yellow | 29.99 ea. |
| TTP-70 | 1970 Black | 29.99 ea. |
| TTP-71 | 1971 Light Blue | 29.99 ea. |



Rear End Plugs & Posi Tag

Reproduction plugs and posi tag.

| | | |
|----------|-----------------------------|-----------|
| HBB-5847 | All Metal Tag..... | 6.95 ea. |
| FDP-5R | 1964-68 Plug 1" | 16.95 ea. |
| FPT-3 | 1964-68 Posi Tag 1" | 12.95 ea. |
| FDP-3R | 1969-72 Plug 3/4" | 16.95 ea. |
| FPT-1 | 1969-72 Posi Tag 3/4" | 12.95 ea. |
| N-7081 | 1964-72 Vent Plug..... | 9.95 ea. |



TCS Wire Retainer

Correct reproduction for Muncie.

| | | |
|---------|-------------------------|-----------|
| ATS-653 | 1970-74 w/ Muncie | 19.95 ea. |
|---------|-------------------------|-----------|



B&M Differential Covers

B&M Cast Aluminum Differential Covers are designed to strengthen the differential by preventing case distortion and ring gear & bearing cap deflection. Constructed of A356.0-T6 aluminum, these rugged covers significantly increase the fluid capacity and dissipate heat much faster than the stock factory unit to prolong the life of your ring and pinion gears.

| | | |
|----------|---|------------|
| BM-70500 | 12 Bolt 8.875" Ring Gear Silver | 204.99 ea. |
| BM-70502 | 10 Bolt 8.2, 5, 6" Ring Gear Silver | 209.99 ea. |
| BM-71502 | 10 Bolt 8.2, 5, 6" Ring Gear Black | 228.99 ea. |
| BM-70503 | 10 Bolt 8.2" BOP Ring Gear Silver | 187.99 ea. |

No Volume Discount.

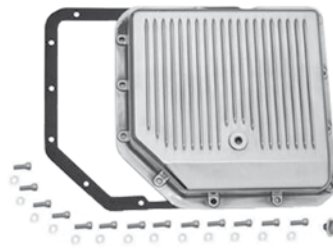


B&M Deep Transmission Pan Cast

These B&M automatic transmission deep pans provide additional fluid capacity and cooling ability. No modifications to the dipstick are needed. They include a drain plug for clean and easy fluid changes. Adds 2-3 quarts to the transmission.

| | | |
|----------|---------------------------------|------------|
| BM-30280 | All TH350, TH250 3Qts..... | 196.99 ea. |
| BM-20280 | All TH400 2Qts..... | 179.99 ea. |
| BM-70280 | All Powerglide 2Qts..... | 190.99 ea. |
| BM-70260 | All TH700RH, 4L60/65E 3Qts..... | 273.99 ea. |

No Volume Discount.



Polished Fined Transmission Pans

Show quality polished stock depth pan crafted from cast aluminum and polished to a bright finish. Includes gasket, drain plug and bolts.

| | | |
|-----------|---------------|-----------|
| GCS-S8491 | TH350 | 52.99 ea. |
| GCS-S8492 | TH400 | 62.99 ea. |
| GCS-S8493 | TH700-R4..... | 62.99 ea. |



Chrome Transmission Pans

Stock depth. Chrome plated steel for a show quality finish.

| | | |
|-----------|-------------------------|-----------|
| GCS-S9074 | TH350 | 19.99 ea. |
| GCS-S7599 | TH700-R4..... | 24.99 ea. |
| GCS-S9124 | Powerglide w/ Fins..... | 19.99 ea. |
| GCS-S9122 | TH350 w/ Fins | 17.99 ea. |
| GCS-S9121 | TH400 w/ Fins | 17.99 ea. |
| GCS-S9712 | TH700-R4 w/ Fins..... | 24.99 ea. |

TRANSMISSION PANS & REAR END COVERS



Extra Capacity Fined Transmission Pans

Same quality show finish as our stock pans but with extra fluid capacity for better cooling.

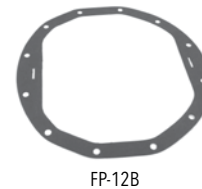
| | | |
|-------------|---|-----------|
| GCS-S9197 | TH400 Turbo 1.5 Extra Qts | 20.99 ea. |
| GCS-S9196 | TH400 Turbo 2.5 Extra Qts | 28.99 ea. |
| GCS-S9197BK | TH400 Turbo 1.5 Extra Qts. Black | 20.99 ea. |
| GCS-S9198BK | TH350 Turbo 1.5 Extra Qts. Black | 20.99 ea. |
| GCS-S9712BK | TH700-R4 Turbo 1.5 Extra Qts. Black | 26.99 ea. |



Custom Rear End Covers

Choose from high quality chrome or bright polished aluminum. A great finishing touch!

| | | |
|------------|-----------------------|-----------|
| GCS-S4786 | 10 Bolt Chrome | 15.99 ea. |
| GCS-S4787 | 12 Bolt Chrome | 15.99 ea. |
| GCS-S5082 | 12 Bolt Polished..... | 84.99 ea. |
| GCS-R0002X | Bolt Kit..... | 8.99 kit |



Rear End Cover

Reproduction 12 bolt cover.

| | | |
|----------|-------------------------|-----------|
| NP-109 | All 12 Bolt Cover | 49.95 ea. |
| FP-10B | 10 Bolt Gasket..... | 6.95 ea. |
| FP-12B | 12 Bolt Gasket..... | 6.95 ea. |
| BRE-2008 | Cover Bolt..... | 0.95 ea. |



FPF-49

FPF-668



Rear End Fluid

AC Delco special fluid and posi additive.

| | | |
|---------|---------------------|-----------|
| FPF-668 | Rear End Fluid..... | 24.95 ea. |
| FPF-49 | Posi Additive | 14.95 ea. |