

BUY'N SAVE
WITH KITS



SHIFTKIT-F63

Console Shifter Kit

Complete kit to convert to an automatic console shifter. Kit includes factory style staple shifter, cable, brackets & all correct hardware.

SHIFTKIT-F63	1968-69 TH350.....	202.16 kit
SHIFTKIT-F64	1968-69 TH400.....	202.16 kit
SHIFTKIT-F73	1970-72 TH350.....	221.71 kit
SHIFTKIT-F74	1970-72 TH400.....	221.71 kit

No Volume Discount



ISS-6F

1968-69 Staple Shifter

OE style reproduction complete automatic staple shifter assembly for your 1968-69 Camaro.

ISS-6F	1968-69	139.99 ea.
--------	---------------	------------

No Volume Discount



ISH-640

1970-72 Staple Shifter

OE style reproduction complete automatic staple shifter assembly for your 1970-72 Camaro.

ISH-640	1970-72	162.99 ea.
---------	---------------	------------

No Volume Discount



ISH-3X

Staple Shifter Handle

OE style reproduction staple shifter handle complete with spring loaded lock out trigger.

ISH-3X	1968-72	79.99 ea.
--------	---------------	-----------



Staple Shifter Repair Kit

ISSFT-HRDW

All the hardware needed to bring a worn out staple shifter back to life.

ISSFT-HRDW	1968-72 ALL	32.99 kit
------------	-------------------	-----------

No volume discount.



SW-DT3

Ratchet Shifter Detent

Converts your factory shifter to a ratchet type shifter. Simple installation.

SW-DT3	1968-69 Powerglide, TH350, TH400	95.95 ea.
SW-DT4	1968-69 700-R4, 200-4R, 4L60, 4L65, 4L80	95.95 ea.



SC2244

4 Speed Overdrive Kits

This kit makes it easy to install a modern overdrive automatic in place of your old Powerglide, TH350 or TH400 for improved performance and gas mileage. Each kit includes a new laser cut and hardened detent, indicator plate, hardware and brackets to allow the use of your factory shifter. This kit works with a TH700, TH200 or 4L60 transmission.

S105-DB	1967	174.95 kit
SC2244	1968-69	99.95 kit
SC2614	1968-69 4L60	99.95 kit
SC2245	1970-72	99.95 kit
SC2615	1970-72 4L60	99.95 kit
SC2261	1973-78	99.95 kit
SC2262	1979-81	99.95 kit



SW280-RCT

1967 Universal Shifter Kit

Universal Camaro shifter that has the look of the factory shifter setup for both the 3 speed TH350/TH400 overdrive 700-R4, 200-4R, 4L60, 4L65 and the 4L80. Complete with neutral safety/back up switch, all rod linkage components and factory-like reverse lock out and detents for each gear. Also includes a universal floor mounting bracket kit.

SW280-RCT	1967 All	349.95 kit
-----------	----------------	------------



1967 Shifter Conversion Kit

S105-DA

Convert your factory 2 speed PowerGlide console shifter to a 3 or 4 speed shifter.

S105-DA	1967 All w/ TH350/400.....	174.95 kit
S105-DB	1967 All w/ TH200R4/700R4 4L60E.....	174.95 kit

This kit uses rod linkage, not a cable.



ISH-724

1967 Auto Shifter Button

This will replace your worn or lost shift handle button perfectly.

ISH-724	Button	14.95 ea.
ISH-724-SPRING	Spring	6.95 ea.

IQ-110P



IQ-110T



Shift Indicator Lenses

Injection molded clear shift indicator lenses.

IQ-109	1967 Powerglide	9.99 ea.
IQ-127	1967 TH350/TH400	6.99 ea.
S121	1967 700-R4/200-4R	18.95 ea.
IQ-110P	1968-69 Powerglide	7.99 ea.
IQ-110T	1968-69 TH350/TH400.....	8.99 ea.
S150	1968-69 Reverse Pattern	24.95 ea.
S120	1968-69 700-R4/200-4R	19.95 ea.



IC-123



IC-45



IC-124

Shifter Sliders

Correct die stamped plastic shifter sliders.

IC-123	1967 Manual	7.99 ea.
IC-45	1967 Automatic	7.99 ea.
IW-340	1967 Slider Retainer.....	6.99 ea.
IC-124	1968 Manual	7.99 ea.
IC-158	1968 Slider Retainer.....	12.99 ea.



3917438



Hurst Shifter

New Hurst Competition Plus shifter complete with Hurst handle and shifter ball.

3914339	1967-68 Muncie.....	411.99 ea.
3917438	1969 Muncie.....	413.99 ea.
3916848	1970-72 Muncie.....	405.99 ea.
3917438	1973-77 Muncie.....	413.99 ea.
HURST-3917960	1982 Console/Borg Warner.....	405.99 ea.

No Volume Discount



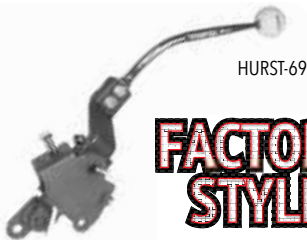
3734529

Hurst Installation Kits

Complete kit with rods, levers, swivels and hardware.

3734529	1967-68 Muncie.....	218.99 kit
3737437	1969 Muncie.....	231.99 kit
3737897	1970-72 Muncie.....	243.99 kit
3738605	1973-74 Muncie.....	243.99 kit
3738609	1974-81 BWT10.....	236.99 kit

No Volume Discount



HURST-69

FACTORY STYLE

1969 OE Hurst Shifter

OE style reproduction of the highly sought after shifter used on all 1969 Camaro 4 speeds. Features correct style handle exclusive to 1969 Camaros.

HURST-69	1969 All.....	399.95 ea.
----------	---------------	------------



HURST-69BB

1969 OE Hurst Shifter Installation Kits

Correct installation hardware kits for your 1969 Hurst Shifter.

HURST-69SB	1969 SB.....	136.95 ea.
HURST-69BB	1969 BB.....	249.95 ea.

Use with Hurst-69



Billet Shifter Handles

These billet aluminum shifter handles from Clayton Machine work with any Hurst or Tremec, TKO500, TKO600 2 bolt shifter mount and are a great finishing touch for your custom ride! Available in three styles. Basic black anodized, truss style with grey powder coat, truss style adjustable grey powder coat. Shift knob not included. Requires knob with 3/8-16" thread. Same as most Hurst knobs.

SH-203-8	8" Black Anno 30° Kick Back.....	169.99 ea.
SH-203-10	10" Black Anno 30° Kick Back.....	175.99 ea.
SH-202-8	8" Grey PC Truss Style 30° Kick Back.....	132.99 ea.
SH-202-10	10" Grey PC Truss Style 30° Kick Back.....	137.99 ea.
SH-204-10	10" Grey PC Truss Style Adj Kick Back.....	228.99 ea.

No volume discount.



FW-115

FZ-1420

FW-157

Shifter Balls

OE style reproduction shifter balls.

FZ-1420	Muncie White 5/16".....	21.99 ea.
FZ-1424	Hurst White 3/8".....	24.99 ea.
FW-115	Chrome 5/16".....	24.99 ea.
FW-117	Chrome 3/8".....	23.99 ea.
FW-157	Black/Chrome 5/16".....	21.99 ea.
FW-159	Black/Chrome 3/8".....	21.99 ea.
FW-38HURST	Hurst White 3/8" 4 Speed.....	38.99 ea.



FZ-8289A

FZ-8289M

1982-89 Z/28 Leather Wrapped Shift Knob

Reproduction of the factory original leather-wrapped shift knob.

FZ-8289A	1982-89 Auto.....	79.99 ea.
FZ-8289M	1982-89 Manual.....	79.99 ea.

No volume discount.



FW-HURST

Hurst T Handle Shifter Knob

This brushed aluminum T-handle provides a positive feel for accurate gear selection. A favorite in the performance world for years! Includes adapters for most popular shift handles.

FW-HURST	T-Handle.....	36.99 ea.
HURST-1530010	T-handle Bushed Alum w/ Button.....	72.99 ea.
HURST-1530011	T-handle Polished Alum w/ Button.....	72.99 ea.



IQ-341

Shifter Tunnel

Correct molded plastic which installs on inside of console.

IQ-341	1969 4 Speed.....	24.99 ea.
IQ-964	1970-72 4 Speed.....	29.99 ea.
IQ-571	1973-81 4 Speed.....	44.99 ea.

NA-578



Reverse Lockout Kit

Complete with 2 rods and swivel mechanism.

NA-578	1969 All.....	84.95 kit
NA-704	1970-74.....	134.95 kit

REVSKIT-UNI



Universal Reverse Lamp Switch Manual

This kit allows you to add a reverse light switch to non-stock applications. If you have a Hurst shifter this kit is a must.

REVSKIT-UNI	All.....	38.99 ea.
-------------	----------	-----------



ICE-09

ICE-4526

IK-407

ICE-3966

ICE-78UP

ICE-HURST

Shifter Boots

Brand new injection molded boots.

ICE-09	1967-68 w/o Console.....	26.99 ea.
ICE-4526	1967-68 w/ Console.....	22.95 ea.
IK-8UP	1968 Upper w/ Console.....	8.99 ea.
IK-407	1969 All.....	22.95 ea.
ICE-3966	1970-81 Lower.....	23.99 ea.
ICE-78UP	1970-81 Upper.....	22.95 ea.
ICE-HURST	Universal.....	59.99 ea.



IQ-635

IK-476

ICE-1516

IW-764

Shift Boot Retainers

Correct die stamped steel boot retainers.

IQ-635	1967-68 w/o Console 2pc.....	43.99 ea.
IK-476	1967-68 w/ Console.....	17.99 ea.
ICE-1516	1969 w/o Console Black.....	12.99 ea.
ICE-1562	1969 w/ Console Chrome.....	16.99 ea.
IW-764	1970-81 All.....	21.99 ea.

IQ-65



4 Speed Emblem

Correct 4 speed console emblems.

IQ-65	1968-69.....	15.99 ea.
-------	--------------	-----------

ISP-F685R



5 & 6 Speed Emblem

5 or 6 speed emblems that look stock!

ISP-F685T	68-69 Tremec 5 Speed.....	51.99 ea.
ISP-F685R	68-69 Richmond 5 Speed.....	51.99 ea.
ISP-F686T	68-69 Tremec 6 Speed.....	51.99 ea.
ISP-F686R	68-69 Richmond 6 Speed.....	51.99 ea.



HURST-3160001

HURST-3838530



Hurst Automatic Shifters

From the originator of high performance manual shifters, is our line of performance street and racing shifters for automatic transmissions that won't let you down.

Pro-Matic 2

Ratchet-action shifter with its chrome-plated stick and black knob is quality engineered for years of precise, trouble-free operation.

HURST-3838500 All 3 Speed.....310.99 ea.

V-Matic 3 Shifter

Designed with a park and reverse lock trigger actuating system that allows smooth and flawless ratcheting through the forward gears.

HURST-3838530 All 3 & 4 Speed.....361.99 ea.

Quarter Stick

The Quarter Stick shifter provides positive gear change control for both street and race applications. Its compact size fits easily in racecars with limited space and is very lightweight at only 2.5 pounds. Features include black oxide coated steel construction, 1018 hardened steel gate plate, forged aluminum shift stick with 7/16-20 tpi and a classic white Hurst shift knob.

HURST-3160001 All 2 Speed*.....312.99 ea.

HURST-3160006 All 3 Speed**.....312.99 ea.

HURST-3160020 All 3 Speed*.....315.99 ea.

*Reverse valve body. **Forward valve body.



HURST-3916029

HURST-3916030

HURST-3916131

1982-19 Hurst Manual Shifters

Hurst Billet/Plus Shifters incorporate a high ratio pivot mechanism for reduced shifter throw and are sturdily constructed for a more positive precise feel when shifting. Self centering alignment improves 2nd to 3rd up-shift gear changes to reduce the chance of "missed shifts".

- HURST-3917960 1982 w/ 4 Speed405.99 ea.
- HURST-3915061 1993-02 w/ T56 Trans328.99 ea.
- HURST-3916029 2010-15 w/ V6248.99 ea.
- HURST-3916030 2010-15 SS268.99 ea.
- HURST-3916030 2012-15 ZL1268.99 ea.
- HURST-3916030 2014-15 Z/28268.99 ea.
- HURST-3916031 2016-19 SS373.99 ea.
- HURST-3916031 2017-19 ZL1373.99 ea.
- HURST-3916034 2016-17 LT260.99 ea.
- HURST-3916047 2016-17 SS ZL1311.99 ea.
- HURST-3916131 2016-19 SS384.99 ea.

*Without shift knob. No volume discount.

B&M Automatic Floor Shifters

From the originator of high performance manual shifters our line of performance, street and racing shifters for automatic transmissions won't let you down. With classic good looks and proven mechanical designs giving choices of either positive ratcheting actions or gated racing shifters, provide positive shifts guaranteeing you won't miss a shift when it counts.



BM-80885

Hammer

The Hammer shifter may just be the most comfortable and versatile shifter available. The unique design of the shift handle easily fits all sizes of hands providing the best wrist angle and feel when shifting.

BM-80885 All 2,3,4 Speed.....250.99 ea.

BM-80675



Starshifter

Features include NHRA/ IHRA reverse lockout, backup light switch, neutral safety switch, polished T-handle. Cable operated for quick installation and accurate shifting.

BM-80675 All 2&3 Speed226.99 ea.

BM-80706



Pro Stick

The Original Pro Stick shifter delivers rock-solid performance, mixed with clean design cues and compact size. This is why you see so many Pro Stick shifters at the race track.

BM-80706 All 2,3,4 Speed321.99 ea.

BM-80690



Megashifter

The B&M Megashifter has it all, form, function and classic style. This all adds up to bring you a quality shifter that's been one of the most popular automatic shifters of all time. First off let's talk function. The Megashifter's positive ratcheting function won't allow you to over shift and miss a gear at that critical moment, along with the reverse lockout feature meets NHRA/IHRA safety rules for those weekend grudge races at the track. The look and feel of the T-handle and accordion style shift boot really shows off the racing heritage of the Megashifter.

BM-80690 All 2,3,4 Speed.....364.99 ea.

BM-80694 1973-81 2,3,4 Speed.....369.99 ea.

BM-81052



Stealth Magnum Pro Stick

The Stealth Magnum Grip Pro Stick shifter delivers rock-solid performance, mixed with clean design cues and compact size.

BM-81052 All 2,3,4 Speed305.99 ea.

BM-80863



Quicksilver

The B&M Quicksilver features a ratcheting action for positive shifts, Chrome Knob, neutral safety switch, NHRA/IHRA approved Reverse Lockout.

BM-80863 All 2,3,4 Speed330.99 ea.

BM-80868 1973-81 2,3,4 Speed.....322.99 ea.

BM-80840



Pro Ratchet

The Pro Ratchet shifter is one of our most popular and easiest to operate race shifters. Features include a positive ratcheting design that self-centers the handle after each shift giving you maximum clearance behind the shifter and won't allow you to miss a shift by over-shifting a gear. This versatile shifter will operate both forward and reverse shift patterns.

BM-80840 All Silver 2 Speed Powerglide.....324.99 ea.

BM-80842 All Silver 3,4 Speed*324.99 ea.

BM-80843 All Carbon 3,4 Speed*327.99 ea.

BM-81120 All Stealth 3,4 Speed*405.99 ea.

*May require PRNDL switch for some applications. No volume discount.



HURST-5389020 HURST-5389023

Hurst Billet Shifter Handles

This is a great way to add a contemporary performance look to your muscle car. Billet Aluminum construction is precision CNC machined for a modern look and feel. Fits classic Hurst shifters with a 2 bolt pattern.

HURST-5389020	6" Straight	81.99 ea.
HURST-5389021	8" Straight	92.99 ea.
HURST-5389022	10" Straight	102.99 ea.
HURST-5389023	6" Lay Back	92.99 ea.
HURST-5389024	8" Lay Back	102.99 ea.
HURST-5389025	10" Lay Back	125.99 ea.

No volume discount.



HURST-5010002

Hurst Indy Manual Shifters

For the past 60 years Hurst has been the most recognized name in performance shifters.

HURST-5010002	Indy 3 Speed	279.99 ea.
HURST-5030030	Indy 4 Speed	410.99 ea.



HURST-3162001 HURST-3162023

Pistol Grip Quarter Stick

The Pistol-grip Quarter Stick shifter provides positive gear change control for both street and race applications. Its compact size fits easily in racecars with limited space and is very lightweight at only 2.5 pounds. Features include black oxide coated steel construction, 1018 hardened steel gate plate, ergonomic billet aluminum pistol-grip shift handle that incorporates a momentary switch which can be used to activate a Hurst Roll control, a trans-brake or a nitrous system.

HURST-3162001	All Silver Handle 2 Speed*	410.99 ea.
HURST-3162002	All Black Handle 2 Speed*	410.99 ea.
HURST-3162006	All Silver Handle 3 Speed**	410.99 ea.
HURST-3162007	All Black Handle 3 Speed**	410.99 ea.
HURST-3162023	All Black Handle 4 Speed**	412.99 ea.

*Reverse valve body. **Forward valve body. No volume discount.

HURST-5008555



HURST-5000029

Hurst Shifter Cables

These premium quality cables feature a solid 303 stainless steel inner wire core encased within a nylon liner wrapped with helical lay wires and swaged ends for superior strength. The core is lubricated with Teflon prior to assembly and then sealed in a heavy plastic outer casing for a lifetime of durability and smooth operation.

Single eyelet on one end and threaded on the other end.

HURST-5000023	3 Feet	71.99 ea.
HURST-5000025	5 Feet	67.99 ea.
HURST-5000028	8 Feet	86.99 ea.

Single eyelet on one end and threaded on the other end. For Pro-Matic & V-Matic shifters

HURST-5008555	5 Feet	64.99 ea.
---------------	--------------	-----------

Eyelets on both ends for quarter stick.

HURST-5000029	5 Feet	75.99 ea.
---------------	--------------	-----------

No volume discount.



B&M Governor Recalibration Kit

This kit allows you to adjust the shift points of your transmission after it is installed in your vehicle. The Governor Recalibration Kit is very useful if you have a vehicle that is very light; has a low rear-end gear ratio.

BM-20248	55-85 TH350, TH400, TH700R4	81.99 kit
----------	-----------------------------------	-----------

No volume discount.



BM-30228



BM-30229



BM-21042

B&M Transpak, Transkit & Master Overhaul Kits

The B&M Transpak has all the features in the Shift Improver Kit, plus it provides additional driver manual control. Retain full automatic features and standard shift points with selector in drive.

BM-30228	1968-81 TH350	95.99 ea.
----------	---------------------	-----------

B&M Transkits give you the same high-quality components that are used in all B&M Street and Strip transmissions. They also include special directions on how to modify your case, pump and components.

BM-30229	1968-81 TH350	279.99 ea.
----------	---------------------	------------

B&M Master Racing overhaul kits are supplied with all of the gaskets, seals, bushings and friction material required for a complete high performance or racing trans overhaul.

BM-21042	1968-81 TH350	236.99 kit
BM-21041	1968-81 TH400	256.99 kit

No volume discount



FMCK-67S
THIS IS AN EXCLUSIVE GROUND UP PRODUCT

BUY'N SAVE WITH KITS

Manual Transmission Conversion Kit

Planning on swapping from automatic to a 4 speed manual? This kit will take the headache out of the switch by providing you with all of the parts needed to make your conversion simple! This complete kit includes the brake/clutch pedals, Z bar, rods, boots, cross shaft kit, springs, bracket and all hardware!

FMCK-67S	1967-68 SB.....	174.94 kit
FMCK-67B	1967-68 BB.....	185.14 kit
FMCK-69S	1969 SB.....	191.85 kit
FMCK-69B	1969 BB.....	201.45 kit
FMCK-70S	1970-71 V8.....	215.02 kit
FMCK-70B	1972-81 V8.....	215.02 kit

With Headers*

FMCK-67S-HD	1967-68 SB.....	169.81 kit
FMCK-67B-HD	1967-68 BB.....	173.26 kit
FMCK-69S-HD	1969 SB.....	187.02 kit
FMCK-69B-HD	1969 BB.....	195.82 kit

No Volume Discount

*Includes everything that comes in regular kits except for the small spring and extension rod which can't be used for headers.

BUY'N SAVE WITH KITS



FCA-5051

Clutch Linkage Kit

If you're looking to fresh up your original linkage but don't need the pedals, this is perfect!

FCA-5051	1967-69 SB.....	119.05 kit
FCA-5053	1967-69 BB.....	128.65 kit
FCA-5050	1970-81 V8.....	163.81 kit

With Headers

FCA-5051-HD	1967-69 SB*.....	114.22 kit
FCA-5053-HD	1967-69 BB*.....	123.02 kit

*Includes everything that comes in regular kits except for the small spring and extension rod which can't be used with headers.



FCI-1860

Clutch & Brake Pedal Assemblies

Complete reproduction brake/clutch pedals.

FCI-1860	1967-68.....	65.99 ea.
FCI-1869	1969.....	99.99 ea.
FCI-1870	1970-71.....	89.99 ea.
FCI-1872	1972-81.....	89.99 ea.



FCI-1006PA

Clutch & Brake Pedal Complete Assembly

Do you want to convert your Camaro to a 4 speed but are missing the pedals and hanger? This complete 4 speed pedal assembly includes the brake pedal, clutch pedal, pads, rod and hanger which mounts under the dash.

FCI-1006PA	1967-68 4-Speed.....	299.95 ea.
FCI-1006PB	1967-68 Automatic.....	249.95 ea.

BUY'N SAVE WITH KITS



FBH-621SUPERKIT

621 Bellhousing Kit

Complete kit with reproduction "621" bellhousing, clutch fork, fork boot, throw-out bearing, bolts and inspection cover. Fits cars with 11" clutch.

FBH-621SUPERKIT	Complete Kit.....	261.31 kit
FBH-621K	Bellhousing and Cover.....	174.93 kit
FBH-621	Bellhousing Only.....	169.95 ea.



FCK-258

Heavy Duty Clutch Kits

Heavy Duty clutch kits include clutch disc, pressure plate, throw out bearing, pilot bushing, alignment tool and grease pack.

FCK-258	11" 10 Spline BB.....	210.95 kit
FCK-260	11" 26 Spline BB.....	219.95 kit
FCK-105	10.5" 10 Spline SB.....	199.95 kit
FCK-108	10.5" 26 Spline SB.....	199.95 kit
BPP-8386	Flywheel to Pressure Plate Bolts.....	9.99 kit

No Volume Discount



BPB-9021

Bellhousing Hardware

BPB-9021	Bellhousing to Block (6pc).....	8.95 kit
BTE-307	Bellhousing to Trans 4 Speed 4pc.....	8.95 kit



FFW-11

Flywheels

FFW-105	10.5" w/o 454 GM.....	279.99 ea.
HAYS-10-130	11" 396/402.....	331.99 ea.
HAYS-10-010	168t 57-85 SBC 65-70 BBC*.....	95.99 ea.
HAYS-10-020	168t SBC 70-90 BBC**.....	89.99 ea.
BPB-5116	Flywheel to Crank Bolts 4 Spd 12pc....	14.99 kit
BPB-5118	Flex Plate to Crank Bolts Auto 12pc ...	16.99 kit

*Internally balanced. **Externally balanced.

No Volume Discount



FTE-3943

Flywheel Inspection Covers

OE style reproduction flywheel covers.

FTE-3943	1967-69 Manual 11".....	24.95 ea.
NK-4497	1967-69 Manual 10.5".....	23.99 ea.
NJ-088	All Powerglide.....	32.95 ea.
NE-810	All TH350.....	34.95 ea.
NJ-089	All TH400.....	93.99 ea.
BFW-506K	Attaching Bolts 4pc.....	1.95 kit



FEH-397

Clutch Fork

New GM clutch fork.

FEH-397	1967-81 All.....	52.99 ea.
FEH-397-GM	1967-81 All Original "GM".....	105.99 ea.



FKW-4999

Clutch Fork Boot

Original clutch fork dust boot.

FKW-4999	1967-81 All.....	8.95 ea.
FKW-11LW	For Lakewood Scatter Shield Bell Housing.....	30.99 ea.



FPB-66



FPB-667

Pilot Bushing

Correct GM bearings for input shaft.

FPB-ROLLER	All Roller.....	21.99 ea.
FPB-667	All Brass.....	13.95 ea.



FTO-641

Throw Out Bearing

Original OEM throw out bearing.

FTO-641	All.....	44.95 ea.
---------	----------	-----------



FTE-9000

Clutch Fork Ball

Clutch fork mounting ball for inside of bellhousing.

FTE-9000	All.....	13.95 ea.
FTE-9000-ADJ	Adjustable.....	29.95 ea.



FPX-828

Clutch Cross Shaft Kit

Original GM stud balls, nylon seats, protective felts, retaining clips, nuts and washers.

FPX-828	Complete All V8	29.95 kit
FPX-6568	Block Ball Only.....	13.95 ea.
FPX-5289	Frame Ball Only.....	13.99 ea.
FPX-3349	Plastic Seat Only.....	2.95 ea.
FPX-3360	Ball Felt	8.99 ea.
FPX-0696	Retaining Clip	1.99 ea.
FPX-33K	Cross Shaft Seal and Kit.....	23.06 kit




FK-130


Clutch Frame Brackets

Correct bracket for mounting Z bar to frame.


FK-130	1967-69	12.99 ea.
FEH-086	1970-81	13.99 ea.
BFB-605	Attaching Bolt.....	0.75 ea.



FCI-501



FCI-108



FTE-3082

Clutch Z Bar
OE style reproduction "zerk" bar.

FCI-501	1967-69 SB.....	38.99 ea.
FCI-108	1967-69 BB.....	49.99 ea.
FTE-3082	1970-81 V8.....	69.99 ea.



FKW-95



FRC-100

Clutch Firewall Rods

FKW-95	1967-69 All V8	19.99 ea.
FKW-276	1970-71 All V8	19.99 ea.
FKW-277	1972-81 All V8	19.99 ea.
FRC-100	Attaching Clip.....	1.99 ea.



FKW-209



FCE-0681

Clutch Adjustment Rod Kits

FKW-209	Most SB.....	19.99 kit
FCE-0681	Most BB.....	19.99 kit
FRC-100	Attaching Clip.....	1.99 ea.



FKW-1461

Clutch Return Springs

Original return springs for clutch fork, etc.

FKW-1461	1967-69 SB.....	5.99 ea.
FPC-520	1967-69 BB.....	6.99 ea.
FCE-3920	1970-81 Most.....	6.95 ea.



FKW-1460

Clutch Spring Extension Rod

Correct clutch spring extension rod for small blocks.

FKW-1460	1967-69 SB.....	6.99 ea.
----------	-----------------	----------



FXB-533

Clutch Spring Extension

Correct clutch spring extension which mounts to the exhaust manifold on big blocks.

FXB-533	1967-69 BB.....	6.99 ea.
---------	-----------------	----------



FRB-172

Clutch Pedal Push Rod Bushing

OE style reproduction clutch pedal push rod bushing for various GM models. This injection molded plastic bushing installs on the clutch pedal and retains the clutch push rod. This small bushing is essential for keeping the clutch push rod in the proper location.

FRB-172	1972-83	1.99 ea.
---------	---------------	----------



FPB-97



FPB-103

Clutch Pedal Bushing & Bumper

Correct nylon bushing used for ease of pedal.

FPB-97	All Bushing.....	1.99 ea.
FPB-103	All Bumper.....	3.95 ea.



Transmission Crossmember

OE style reproduction crossmembers for mounting your transmission.

FCM-85	1967-69 TH400.....	59.95 ea.
FCM-85M	1967-69 TH350 or 4 Speed.....	79.95 ea.
FCM-85B4	1967-69 BB 4 Speed.....	139.95 ea.
FCM-75	1970-81 TH400.....	79.95 ea.
BPC-7000	1967-81 Mountina Bolts 16oc.....	6.95 kit



Hooker Blackheart LS Swap Transmission Crossmembers

- Designed using CAD modeling/FEA analysis for optimal fitment, strength, weight, safety and appearance
- High-strength low-alloy steel construction
- Engineered 3 to 3.5 degree engine/transmission inclination
- Designed in conjunction with Hooker LS engine swap brackets
- Will install with either a stock rubber or Energy 3-1108 poly mount
- Provides the highest clearance available for up to 3" exhaust system routing

HKR-12625HKR	67-69 4160E* 4L65/70/75.....	255.99 ea.
HKR-12626HKR	67-69 T56, T56 Magnum.....	255.99 ea.
HKR-12616HKR	70-81 4160E* 4L65/70/75.....	250.99 ea.
HKR-12614HKR	70-81 T56, T56 Magnum.....	260.99 ea.

*2 piece case only. No volume discount.

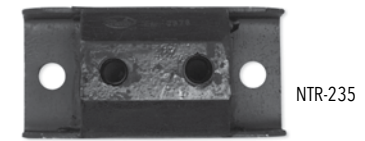


GForce Transmission Crossmembers

When you need extra exhaust clearance or just want to make your car handle better, these crossmembers are for you!

FCM-RCF1-350	1967-69 TH350, TH200, Muncie, Powerglide, T10, Saginaw	235.99 ea.
FCM-RCF1-400	1967-69 200R4, TH400 Short Tail.....	235.99 ea.
FCM-RCF1-700	1967-69 700R4, 4L60, Early 4L60E.....	235.99 ea.
FCM-RCF1-4L80	1967-69 4L80E, 4L85E	290.99 ea.
FCM-RCF1-T56	1967-69 GM T-56 (from a 93-97 F-body).....	235.99 ea.
FCM-RCF2E-350	1970-74 TH350, TH200, Muncie, Powerglide, T10, Saginaw.....	235.99 ea.
FCM-RCF2E-400	1970-74 200R4, TH400 Short Tail.....	235.99 ea.
FCM-RCF2E-700	1970-74 700R4, 4L60, Early 4L60E.....	235.99 ea.
FCM-RCF2L-350	1975-81 TH350, TH200, Muncie, Powerglide, T10, Saginaw.....	235.99 ea.
FCM-RCF2L-400	1975-81 200R4, TH400 Short Tail	235.99 ea.
FCM-RCF2L-700	1975-81 700R4, 4L60, Early 4L60E.....	235.99 ea.
FCM-RCF2L-4L80	1975-81 4L80E, 4L85E	290.99 ea.
FCM-RCF2L-T56	1975-81 GM T-56 (from a 93-97 F-body).....	235.99 ea.

Note: Energy Suspension mounts are required with all GForce crossmembers. No Volume Discount



Transmission Mounts

NPG-100	All Powerglide.....	11.95 ea.
NTR-235	All TH350/ Manual.....	13.95 ea.
NTR-225	All TH400	13.95 ea.
BTE-7939	Mounting Bolt.....	0.95 ea.



Hurst Transmission Swap Crossmembers

These ultra-trick Hurst transmission cross-members have painstakingly been designed and fabricated from thick steel plate and heavy gauge steel tubing for a perfect fit and finish that has no equal. These bolt-in units are much stronger than the factory stock crossmembers and help maintain the correct transmission and driveshaft angle. Precision cut and fully mig-welded, then given a durable black powder coating finish to last a lifetime and give you peace of mind knowing you're buying the best parts available for your tremec TKO 5-Speed or Magnum 6-Speed conversions. You can surely trust the company that originally started out making conversion mounts back in 1958, Hurst Performance.

HURST-67510014	67-69 Magnum 6 Speed LS w/ Small Block Engine Mounts.....	328.99 ea.
HURST-67510002	67-69 Magnum 6 Speed LS w/ Big Block Engine Mounts.....	328.99 ea.
HURST-67510008	67-69 TKO 5-6 Speed w/ Small Block Engine Mounts	305.99 ea.
HURST-67510013	67-69 TKO 5-6 Speed w/ Big Block Engine Mounts	380.99 ea.
HURST-67510015	70-74 Magnum 6 Speed LS Swap	328.99 ea.
HURST-67510011	70-74 Magnum 6 Speed LS Swap	387.99 ea.
HURST-67510001	75-81 Magnum 6 Speed LS Swap	316.99 ea.
HURST-67510012	75-81 Magnum 6 Speed LS Swap	339.99 ea.

No volume discount.



Poly Graphite Transmission Mount

Poly mounts outlast OEM mounts and are able to absorb most driveline vibrations.

Add G to the part number for black. Add R to part number for red. Example: 3-1110G is for 82-83 in black.

3-1108G	1967-92 All	34.99 ea.
---------	-------------------	-----------

Torque Arm To Transmission Bushings

3-1110_	1982-83 All	18.95 ea.
3-1112_	1984-92 Lips toward drive shaft	18.99 ea.
3-1111_	1984-92 Lips away from drive shaft.....	18.99 ea.
3-1111_	1993-02 All	18.99 ea.



Brake Pads & Trim

OE style reproduction pads with correct ribs and medallions where applicable.

IHQ-236	All Auto Drum 6.5".....	4.99 ea.
IHQ-0163	All Auto Disc 6.5".....	9.99 ea.
IBB-8683	Auto Brake Trim.....	5.99 ea.
IHQ-0191	4 Speed Drum Brake.....	4.95 ea.
IHQ-0120	4 Speed Disc Brake.....	11.99 ea.
IHQ-0192	4 Speed Trim.....	5.99 ea.
IHQ-99F	1972-81 Small Clutch.....	9.95 ea.
IHQ-0125	1972-81 4 Speed W/Disc Brake.....	9.95 ea.



Transmission Cooler Lines

New OE style reproduction transmission cooling lines with flared ends and correct nuts.

		OM	SS
FTC6701	1967-69 Powerglide.....	50.99 ea.	77.99 ea.
FTC6703	1967-69 TH350.....	50.99 ea.	77.99 ea.
FTC6705	1967-69 TH400.....	50.99 ea.	77.99 ea.
FTC6708	1967-69 TH700-R4.....	50.99 ea.	77.99 ea.
FTC7005	1970-74 TH350.....	50.99 ea.	77.99 ea.
FTC7005	1970-74 TH350 1/2 Rad Fitting.....	50.99 ea.	77.99 ea.
FTC7006	1970-74 TH400 5/8 Rad Fitting.....	50.99 ea.	77.99 ea.
FTC8003	1974-81 TH350.....	50.99 ea.	77.99 ea.

Ships Oversize

Transmission Vacuum Lines

New OE style reproduction transmission vacuum lines with flared ends.

		OM	SS
FTV6701	1967-69 Powerglide.....	30.99 ea.	41.99 ea.
FTV6703	1967-68 TH350 LH Modulator.....	30.99 ea.	41.99 ea.
FTV6903	1967-69 TH350 RH Modulator.....	30.99 ea.	41.99 ea.
FTV6705	1967-69 TH400.....	30.99 ea.	41.99 ea.
FTV7005	1970-74 TH400.....	30.99 ea.	49.99 ea.
FTV7401	1974 Z/28.....	29.99 ea.	41.99 ea.
FTV7801	1978-81 TH350.....	29.99 ea.	41.99 ea.

Ships Oversize



Modulator Valve

Replacement modulator valve for automatic transmission.

FTM-12903	PG, TH350, TH400.....	39.95 ea.
-----------	-----------------------	-----------

Note: Smaller than original but functions the same.



Kickdown Cable & Bracket

Correct kickdown cable and bracket for cars with a TH350 transmission.

S530KIT	All TH350 Cable/Bracket.....	32.31 kit
S530	All TH350 Cable.....	20.95 ea.
S531	All TH350 Bracket.....	14.95 ea.



Cable Mounting Bracket

Correct bracket for mounting cable to transmission.

FCB-1210	1968-72 TH350.....	19.99 ea.
FCB-220	1968-72 TH400.....	19.99 ea.
FCB-193	1973-74 TH400.....	35.99 ea.



Shifter Cable Lever Brackets

Correct cable lever brackets which mount to transmission.

FCB-322	1968-69 1st Design.....	19.99 ea.
FCB-222	1970-72 2nd Design.....	24.95 ea.



Shifter Cable Stud

Correct cable stud which mounts to bracket.

FTH-050	Mounting Stud (to bracket).....	9.99 ea.
---------	---------------------------------	----------



Shifter Cables

Original GM or high quality reproduction shifter cables for floor mounted TH shifter.

FTH-973R	1968-72.....	28.95 ea.
FTH-973	1968-72 GM.....	94.95 ea.
FTH-773	1973-81.....	29.99 ea.



Shifter Cable Clip

Correct gold clip for mounting cable.

EBC-22	Mounting Clip.....	2.99 ea.
--------	--------------------	----------



Shifter Cable Clip

Correct push on clip which mounts to shifter.

FTH-049	Push on Clip (to shifter).....	7.99 ea.
---------	--------------------------------	----------



Clutch Pedal Booster Rod & Clip

For use with power disc brakes.

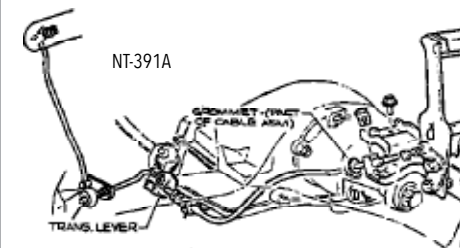
FBC-799	Booster Rod Clip.....	6.99 ea.
FBF-606	Booster Rod Fork.....	14.95 ea.



Column Shift Transmission Bracket

Correct column shift transmission bracket which mounts on all column shift GM cars from 1969-1979.

FTB-13433	1969-79.....	11.95 ea.
-----------	--------------	-----------



Back Drive Components

Correct bracket, spring, nylon bushing and mounting bolts that mount to the driver's side frame rail. Provides a pivot point for the automatic on the column shift linkage.

NT-391A	1969-72 Complete Kit.....	27.95 kit
NT-2833	1969-72 Bracket Only.....	16.95 ea.
NT-69BU	1969-72 Bushing Only.....	5.95 ea.
FB-69SP	1969-72 Back Drive Spring.....	5.95 ea.

Column Shift Linkage and Lockout Swivel Assembly

Correct swivel assembly for automatic column shift linkage and lockout.

FSA-ZRLOS 1967-81 19.95 ea.

FCR-3920215

FCR-3914805

Steering Column Rods

FCR-3920215 1967-69 Upper PG 19.95 ea.
 FCR-3972257 1967-69 Upper TH350/TH400 19.95 ea.
 FCR-3945511 1968-69 Lower TH350 19.95 ea.
 FCR-3914805 1967-69 Lower TH400 19.95 ea.
 FCR-3895294 1967-68 Lower PG 18.95 ea.
 FCR-3939743 1969 Lower PG 19.95 ea.

Driveshaft Yokes

New front drive shaft yokes.

FY-123 Front Yoke TH400 99.99 ea.
 FY-123 Front Yoke 1971-72 M22 99.99 ea.
 FY-935 Front Yoke TH350/4 spd 99.95 ea.

Tail Seals

Correct tail shaft yoke seals.

FTS-PG Powerglide 5.95 ea.
 FTS-350 TH350 5.95 ea.
 FTS-400 TH400 10.95 ea.

Tail Shaft Bolts

Correct TR head markings & black phosphate plating.

BSB-12925 PG, TH350, TH400 6pc 9.95 kit

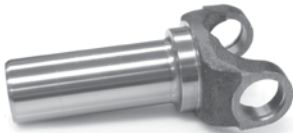
U Joint Attaching Kits

Correct straps and bolts for attaching drive shaft to rear yoke.

BPU-337 All Straps with Bolts 15.99 kit
 BPU-334 All U Bolts with Nuts 16.99 kit



FSA-ZRLOS



Rear Axle Yokes

New rear differential yokes.

FY-2122 Strap Type 114.95 ea.



BM-70500

B&M Differential Covers

B&M Cast Aluminum Differential Covers are designed to strengthen the differential by preventing case distortion, ring gear & bearing cap deflection. Constructed of A356.0-T6 aluminum, these rugged covers significantly increase the fluid capacity and dissipate heat much faster than the stock factory unit to prolong the life of your ring and pinion gears.

BM-70500 12 Bolt 8.875" Ring Gear Silver 194.99 ea.
 BM-70502 10 Bolt 8.2,5, or 6" Ring Gear Silver 198.99 ea.
 BM-71502 10 Bolt 8.2,5, or 6" Ring Gear Black 216.99 ea.
 BM-70503 10 Bolt 8.2" BOP Ring Gear Silver 177.99 ea.
 No volume discount.



GCS-R0002X

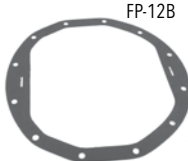


GCS-S4787

Custom Rear End Covers

Choose from high quality chrome or bright polished aluminum. A great finishing touch!

GCS-S4787 12 Bolt Chrome 13.59 ea.
 GCS-S5082 12 Bolt Polished 76.49 ea.
 GCS-R0002X Bolt Kit 8.99 kit



FP-12B



NP-109

Rear End Cover

OE style reproduction rear end covers.

NP-109 12 Bolt Cover 49.95 ea.
 FP-10B 10 Bolt Gasket 6.95 ea.
 FP-12B 12 Bolt Gasket 6.95 ea.
 BRE-2008 Cover Bolt 0.95 ea.

FPF-49



FPF-668



Rear End Fluid

AC Delco rear end fluid and posi additive.

FPF-668 Rear End Fluid 24.95 ea.
 FPF-49 Posi Additive 14.95 ea.
 Typical GM rear ends require 1 bottle of additive and 3 bottles of fluid.

FY-2122



TTP-68



TTP-71



TTP-70



TTP-6972



Turbo HydraMatic Transmission ID Tags

Turbo HydraMatic transmission ID tag with rivet, measuring 1-1/8 inch x 1-15/16 inch. This installs on the side of the transmission case with the rivet. You must punch your own info onto the tag.

TTP-68 1968 Dark Olive 29.95 ea.
 TTP-6972 1969 & 72 Yellow 29.95 ea.
 TTP-70 1970 Black 29.95 ea.
 TTP-71 1971 Light Blue 29.95 ea.



HBB-5847



FDP-3R



FPT-3



FDP-5R



N-7081

Rear End Plugs & Posi Tag

OE style reproduction plugs and posi tag.

HBB-5847 All Metal Tag 6.95 ea.
 FDP-5R 1967-68 Plug 1" 16.95 ea.
 FPT-3 1967-68 Posi Tag 1" 12.95 ea.
 FDP-3R 1969-72 Plug 3/4" 16.95 ea.
 FPT-1 1969-72 Posi Tag 3/4" 12.95 ea.
 N-7081 1967-72 Vent Plug 9.95 ea.



TCS Wire Retainer

Correct reproduction for Muncie.

ATS-653 1970-74 w/ Muncie 19.95 ea.



ATS-21MP



ATS-21MS

TCS Transmission Switches

Correct TCS switch located on transmission.

ATS-21MP 1970-75 Pin Style 32.95 ea.
 ATS-21MS 1970-75 Spade Style 32.95 ea.

Screw-On
up to 1968



Clip-On
1969 & up



Speedometer Cables

New complete cables with casings and correct ends ready to install.

1967-68 Cables came with screw on fittings on both ends.

1969 and up cables had a screw end on the transmission and a clip on end on the speedometer.

Check your speedometer fitting and length before ordering.

FCC-006	1967-68 38" Upper (Screw On).....	18.95 ea.
FCC-201	1967-68 64" LH (Screw On).....	18.95 ea.
FCC-203	1967-68 83" RH (Screw On).....	18.95 ea.
FCC-202	1969-92 100" (Clip On).....	18.95 ea.
FCC-205	1969-92 80" (Clip On).....	18.95 ea.
FCC-305	1969-92 61" (Clip On).....	18.95 ea.
FCC-309	1969-92 41" (Clip On).....	18.95 ea.
FSG-100	1967-69 Grommet.....	6.95 ea.

Longer cables are for cars with a RH passenger side speedometer drive on the transmission.



FCA-877

Speedometer Cable Assembly

Manufactured to OE style original specifications, these assemblies come complete with a high quality firewall grommet already installed to save time and hassles.

FCA-870	1967-68 58".....	32.99 ea.
FCA-871	1967-68 69".....	32.99 ea.
FCA-872	1967-68 73".....	32.99 ea.
FCA-874	1967-68 Upper 37.5".....	32.99 ea.
FCA-876	1969 62".....	36.99 ea.
FCA-877	1969 71".....	32.99 ea.



IRC-006

Speedometer Cable Retaining Clip

Holds the cable to the back of speedometer.

IRC-006	1969-81 All.....	5.99 ea.
---------	------------------	----------



FSG-100

Speedometer Cable Grommet

Correct rubber seal for firewall.

FSG-100	1967-69 All.....	6.95 ea.
FSG-22	1970-81 All.....	7.95 ea.



FSP-10

Speedometer Cable Plug

For 4 Speed Muncie only.

FSP-10	All.....	1.95 ea.
--------	----------	----------



FHB-115

Speedometer Cable Clip

OE style reproduction of the speedometer cable clip that mounts on the firewall and transmission hump.

FHB-115	1967-69 All.....	11.95 ea.
---------	------------------	-----------



6454841



3954257

Speed Warning Indicator Cables

This high quality reproduction speed warning cable was originally found on cars with RPO code U15 (speed warning indicator).

6454841	1967-68 All.....	29.99 ea.
6476813	1969 All.....	29.99 ea.
3954257	1969 Cable Bracket.....	29.99 pr.



FHB-13653

Speedometer Cable Clip

Bolts to the bottom of the transmission tail shaft bolt to keep the speedometer cable from hanging down.

FHB-13653	1970-79.....	14.95 ea.
-----------	--------------	-----------



1993413

Reverse Lamp Switch

Correct switch assembly for activating reverse lamps.

1993413	1967-68 w/ Muncie.....	74.99 ea.
GNS-33	1969-73 4 Speed.....	49.99 ea.



10665

Reverse Switch Extension Harness

Correct harness which plugs into firewall.

10665	1967-68.....	23.99 ea.
-------	--------------	-----------

BUY 'N SAVE WITH KITS



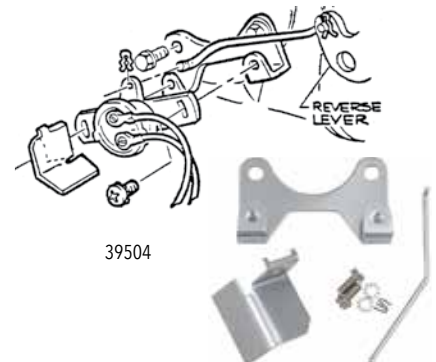
REVSKIT-67F

Reverse Switch Kit

This kit includes all components needed for a complete installation: Switch, extension harness, bracket, shield and rod.

REVSKIT-67F	1967-68.....	127.74 kit
-------------	--------------	------------

No Volume Discount



39504

Reverse Switch Mounting Kit

Complete with bracket, shield, rod, clips and hardware for mounting the reverse switch.

39504	1967-68 Complete.....	42.95 kit
GRB-342	1967-68 Bracket Only.....	14.95 ea.
GWT-17	1967-68 Shield Only.....	9.95 ea.
GRR-58	1967-68 Rod/Clips Only.....	17.95 ea.



GNS-1969

Neutral Start Switches

Correct safety switch located at the pedal to prevent the car from starting in gear.

GNS-1969	1969 Manual.....	59.95 ea.
FSR-372	Switch Rod & Clip.....	16.99 ea.

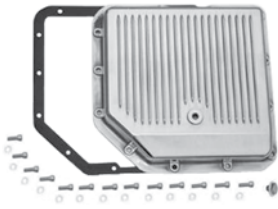


GNS-23

Neutral Start/Reverse Lamp Switch

Correct switch for proper engine and reverse light activation.

GNQ-375	1967 Console.....	39.99 ea.
GNS-23	1967-68 TH350/TH400.....	21.99 ea.
GDR-411	1969-73 Automatic.....	21.95 ea.



GCS-S8491

Polished Finned Transmission Pans

Show quality polished stock depth pan crafted from cast aluminum and polished to a bright finish. Includes gasket, drain plug and bolts.

GCS-S8491	TH35042.39 ea.
GCS-S8492	TH40050.39 ea.
GCS-S8493	TH700-R462.99 ea.



GCS-S9074

Chrome Transmission Pans

Stock depth. Chrome plated steel for a show quality finish.

GCS-S9074	TH35015.99 ea.
GCS-S7599	TH700-R424.99 ea.



GCS-S9124

Chrome Finned Transmission Pans

Stock depth. Chrome plated steel with fins.

GCS-S9124	Powerglide15.99 ea.
GCS-S9122	TH35014.39 ea.
GCS-S9121	TH40014.39 ea.
GCS-S9712	TH700-R419.99 ea.

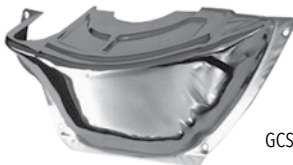


GCS-S9197

Extra Capacity Chrome Finned Transmission Pans

Same quality show finish as our stock pans but with extra fluid capacity for better cooling.

GCS-S9197	1.5 Extra Qts TH40016.79 ea.
GCS-S9196	2.5 Extra Qts TH40028.99 ea.



GCS-S9417

Custom Flywheel Inspection Covers

Looks great on any show car!

GCS-S9417	PG Chrome21.59 ea.
GCS-S8607	TH350/TH400 Polished38.39 ea.
GCS-S9588	TH350/TH400 Chrome18.89 ea.
GCS-S9587	TH700-R4 Chrome22.39 ea.



B&M Deep Transmission Pan Cast

These B&M automatic transmission deep pans provide additional fluid capacity and cooling ability. No modifications to the dipstick are needed. They include a drain plug for clean and easy fluid changes. Adds 2-3 quarts to the Transmission.

BM-30280	All TH350, TH250 3Qts186.99 ea.
BM-20280	All TH400 2Qts169.99 ea.
BM-70280	All Powerglide 2Qts180.99 ea.
BM-70260	All TH700RH, 4L60/65E 3Qts259.99 ea.

No volume discount.



FDT-350

Dipstick & Tubes

GM replacement dipstick and tubes.

FDT-350	TH350 Tube21.95 ea.
FDT-400	TH400 Tube21.95 ea.
FDS-3	TH350 Stick9.95 ea.
FDS-4	TH400 Stick9.95 ea.



GCS-S9422

Chrome Dipsticks and Tubes

Show quality dipsticks are an excellent upgrade to any engine compartment. Includes dipstick & tube.

GCS-S9422	Powerglide11.19 ea.
GCS-S9421	TH35010.39 ea.
GCS-S9421BA	TH350 Billet Handle17.59 ea.
GCS-S4994	TH350 34"13.99 ea.
GCS-S4994BA	TH350 34" Billet Handle17.99 ea.
GCS-S4995	TH400 24"9.34 ea.
GCS-S4995BA	TH400 24" Billet Handle11.99 ea.



GCS-S5004

Chrome Dipsticks w/ Braided Tubes

Stainless steel braided tube with chrome handle.

Bellhousing Mount

GCS-S5004	TH35036.54 ea.
GCS-S5005	TH40036.54 ea.
GCS-S5006	TH700-R434.39 ea.

Firewall Mount

GCS-S5104	TH350/TH400 29"41.64 ea.
GCS-S5106	TH700-R441.64 ea.



GCS-S6053

Stainless Steel Kickdown Cables

Show quality look with more adjustability than your factory cable.

GCS-S6053	TH35041.99 ea.
GCS-S6051	TH700-R444.99 ea.

Note: For carburetor applications only.



Muncie M20, M21, M22

TH350, TH400

Transmission Speedometer Gears

These are the correct speedometer drive gears which go inside the transmission case. Please compare the gear you have to what you are ordering as the color or tooth count may vary from original. We do not have an application chart for these, so if changing axle ratios or tire size, please consult various online resources.

Muncie M20, M21, M22.

Saginaw 3 & 4 Speed and Powerglide

FR-158RB	17 Tooth Purple16.95 ea.
FR-158RD	18 Tooth Brown16.95 ea.
FR-158RF	19 Tooth Natural16.95 ea.
FR-158RH	20 Tooth Blue16.95 ea.
FR-158RK	21 Tooth Red16.95 ea.
FR-158RM	22 Tooth Gray16.95 ea.
FR-158RS	23 Tooth Black16.95 ea.
FR-158RV	24 Tooth Orange16.95 ea.

TH350, TH375, TH400, TH475

FR-158SB	35 Tooth Pink16.95 ea.
FR-158SD	36 Tooth White16.95 ea.
FR-158SF	37 Tooth Red19.95 ea.
FR-158SH	38 Tooth Blue16.95 ea.
FR-158SM	40 Tooth Black16.95 ea.
FR-158SP	41 Tooth Yellow16.95 ea.
FR-158SS	42 Tooth Green16.95 ea.
FR-158SV	43 Tooth Purple16.95 ea.
FR-158SX	44 Tooth Dark Gray16.95 ea.
FR-158SZ	45 Tooth Light Blue16.95 ea.



BM-70264

B&M Transmission Coolers & Kits

B&M Super Coolers are 100% aluminum stacked plate style core which is ideal for additional transmission cooling. With oven brazed construction this sturdy cooler design is practically impervious to flying rocks or other debris.

Small

BM-70265	All 7,500 BTU Polished97.99 ea.
BM-70273	All 15,000 BTU Black89.99 ea.

Medium

BM-70268	All 13,000 BTU Black90.99 kit
BM-70266	All 20,500 BTU Black121.99 ea.
BM-70272	All 20,500 BTU Polished166.99 ea.

Large

BM-70264	All 14,400 BTU Black105.99 kit
BM-70274	All 29,200 BTU Black147.99 ea.

No volume discount.



BM-70298

B&M HiTek Cooling Systems

Hi-Tek Super Coolers are fitted with a high quality 12 Volt cooling. Suitable for many fluids including ATF, engine oil, differential oil and power steering fluid.

BM-70298	All 350 CFM Black330.99 ea.
BM-70297	All 590 CFM Black364.99 ea.

No volume discount.

Centerforce Clutches & Flywheels

Whether you are building a street cruiser or a high powered drag race car, Centerforce clutches and flywheels will get you down the road reliably. With kits ranging from your basic entry-level performance clutch, to their radical twin disc kits, Centerforce offers the kit for you.

Steel Flywheels

Centerforce steel flywheels are manufactured from high quality billet steel and match closely to the original equipment flywheel weight. Please make sure to double check application before ordering.

700120	11" 168 Tooth, Internally Balanced Engines 454 BB 33 in/oz	298.99 ea.
700140	11" 168 Tooth, Externally Balanced Engines	381.99 ea.

Flywheels for externally balanced engines have a 23.4 in/oz. counter balance.

Centerforce I Clutch Kits

The Centerforce 1 Clutch Series is designed as a high-quality entry-level performance clutch for those in need of a superior stock replacement. Please make sure to double check application before ordering.

KCF523516	1966-70 396ci, 168 Tooth, 11" Clutch, 10 Spline	334.99 kit
KCF523516	1967-70 350ci, 168 Tooth, 11" Clutch, 10 Spline	334.99 kit
KCF523516	1970 400ci, 168 Tooth, 11" Clutch, 10 Spline	334.99 kit
KCF523516	1972 402ci 168 Tooth, 11" Clutch, 10 Spline	334.99 kit

Centerforce II Clutch Kits

The Centerforce II Clutch Series utilizes a full facing disc with premium friction materials and a pressure plate with patented centrifugal weights (where applicable). Furthermore, static clamp load is increased via a patented machining processes; this combination allows superb holding power and maximum clutch life, making this clutch ideal for selected street/strip applications. Please make sure to double check application before ordering.

KCFT355216	1966-70 396ci, 168 Tooth, 11" Clutch, 10 Spline.....	404.99 kit
KCFT355216	1967-70 350ci, 168 Tooth, 11" Clutch, 10 Spline	404.99 kit
KCFT355216	1970 400ci, 168 Tooth, 11" Clutch, 10 Spline	404.99 kit
KCFT355216	1972 402ci, 168 Tooth, 11" Clutch, 10 Spline.....	404.99 kit



KCFT355216



N1716

Centerforce Accessories

N1716	Throw-out Bearing, All	47.99 ea.
-------	------------------------------	-----------

HAYS-92-1003

Hays Manual Clutches

Hays Street 450 single disc kits are an excellent upgrade offering up to 30% more holding power over your stock clutch. Designed to handle stock to mildly modified engines up to 450 horsepower. This is a great clutch where drivability is the most important factor along with a stock pedal feel.

HAYS-91-1003	10.5" 26 Spline	289.99 kit
HAYS-91-1002	10.5" 10 Spline	286.99 kit
HAYS-91-1004	11" 10 Spline	296.99 kit
HAYS-91-1005	11" 26 Spline	296.99 kit

Hays Street 650 single disc kits are designed to handle highly modified naturally aspirated engines up to 650 horsepower. Designed as a true street/strip clutch for spirited high performance driving or frequent track use.

HAYS-92-1003	10.5" 26 Spline	574.99 kit
HAYS-92-1002	10.5" 10 Spline	553.99 kit
HAYS-92-1004	11" 10 Spline	589.99 kit
HAYS-92-1005	11" 26 Spline	584.99 kit

No volume discount.

HAYS-10-010

Hays Automatic Flexplate

Hays heavy duty Flexplate for high performance competition Chevy engines are constructed of a thicker than stock steel plate. This enables them to withstand the stress of high-stall torque converters and high-RPM engines. These flexplates are supplied with a ring gear that is securely welded in place and feature a dual bolt pattern for use with a Powerglide or Turbo style torque converter.

HAYS-10-010	168t 57-85 SBC 65-70 BBC*	95.99 ea.
HAYS-10-020	168t SBC 70-90 BBC**	89.99 ea.

*Internally balanced. **Externally balanced.
No volume discount.

BM-20230

B&M Automatic Flexplate

Heavy duty flexplate for extreme racing or street applications. SFI certified for NHRA & IHRA.

BM-20230	55-85 168t SBC up to 1991 BBC 109.99 ea.	
BM-20232	55-85 168t SBC 400	117.99 ea.
BM-20233	55-85 168t BBC 454	106.99 ea.
BM-20232	55-85 153t SBC.....	117.99 ea.

*Except SBC 400 and BBC 454. No volume discount.

Lakewood Bellhousing

The Lakewood 15000LKW bellhousing connects Chevy small and big block engines to transmissions utilizing the standard GM pattern such as the Muncie, Saginaw, Borg Warner T10 and Tremec TKO transmissions. This bellhousing is hydro formed to fit '58-'87 GM full and midsize cars, 67-81 F-body vehicles and 68-79 Novas. This bellhousing is S.F.I. 6.1 certified which is required by many sanctioning bodies for cars running 11.49 or faster in the quarter mile. The Lakewood 15000 comes complete with engine block plate and Grade 8 mounting hardware.

LW-15000LKW	1967-1981 SBC, BBC	524.99 ea.
FEH-397	1967-1981 All Resto Clutch Fork.....	52.99 ea.
FKW-4999	1967-1981 All Clutch Fork Boot.....	8.95 ea.
FKW-11LW	1967-1981 All Clutch Fork Boot.....	30.99 ea.
FTE-9000-ADJ	1967-1981 All Adjustable Clutch Fork Ball	29.95 ea.

No volume discount.



LW-15000LKW

FKW-11LW

FKW-4999

FEH-397