



E-DIX69

Value Front Suspension Kit

This kit is perfect for your daily driver or restoration on a budget. It includes all high quality imported suspension parts.

- 2 Upper Ball Joints
- 2 Lower Ball Joints
- 4 Lower Control Arm Bushings
- 2 Upper Control Arm Bushings
- 2 Outer Tie Rods
- 2 Inner Tie Tods
- 2 Stabilizer Ends Links
- 2 Adjuster Sleeves
- 2 Sway Bar Bushings

E-DIX69 1967-69 All 182.84 kit

No volume discount.



3-18119G

Energy Suspension Hyperflex Kit

These complete Hyperflex kits include all the bushings for the suspension, subframe and include a transmission mount.

Add G to the part number for black. Add R to part number for red.

Example. 3-18119G is for 67-81 in black.

3-18118G	1967-69 Multi Leaf	272.99 kit
3-18119_	1967-69 Mono Leaf	272.99 kit
3-18116_	1975-79 ALL	334.99 kit
3-18131_	1982-92 ALL	168.99 kit
3-18130_	1993-02 ALL W/V8*	248.99 kit

* Except 1LE Suspension



DIX-69

Deluxe Front Suspension Kit

This is the ultimate suspension kit!
Each kit includes the finest quality components.

- 2 Upper Ball Joints
- 4 Lower Control Arm Bushings
- 2 Lower Ball Joints
- 4 Upper Control Arm Bushings
- 2 Outer Tie Rods
- 2 Stabilizer Ends Links
- 2 Inner Tie Tods
- 2 Adjuster Sleeves
- 1 Idler Arm

DIX-69 1967-69 All 291.28 kit

Ships Oversized. No volume discount.



DJR-69

Junior Front Suspension Kit

This kit is perfect for freshening up your front suspension!
Each kit includes the finest quality components.

- 2 Upper Ball Joints
- 4 Lower Control Arm Bushings
- 2 Lower Ball Joints
- 4 Upper Control Arm Bushings
- 2 Outer Tie Rods
- 2 Stabilizer Ends Links

DJR-69 1967-69 All 185.14 kit

Ships Oversized. No volume discount.



6874SFK-P

Polygraphite Complete Front End Kit

For the ultimate in performance, install a polygraphite front end kit! This kit offers increased longevity and better performance than the stock rubber front end components. Kits includes upper and lower ball joints, inner and outer tie rods, tie rod adjusting sleeves, idler arm and control arm bushing kit and bump stops.

6874SFK-P 1967-69 All 338.66 kit

End link kit sold separately. No Volume Discount.



6874FK-P

Polygraphite Basic Front End Kit

Polygraphite bushings used in this kit are the ultimate combination of polyurethane and graphite. You get performance and durability with superior lubricating qualities which provides smooth operation. Kits include upper and lower ball joints, outer tie rods, control arm bushing kit and lower bump stops.

6874FK-P 1967-69 All 228.37 kit

No Volume Discount.

AMK inc
PRODUCTS

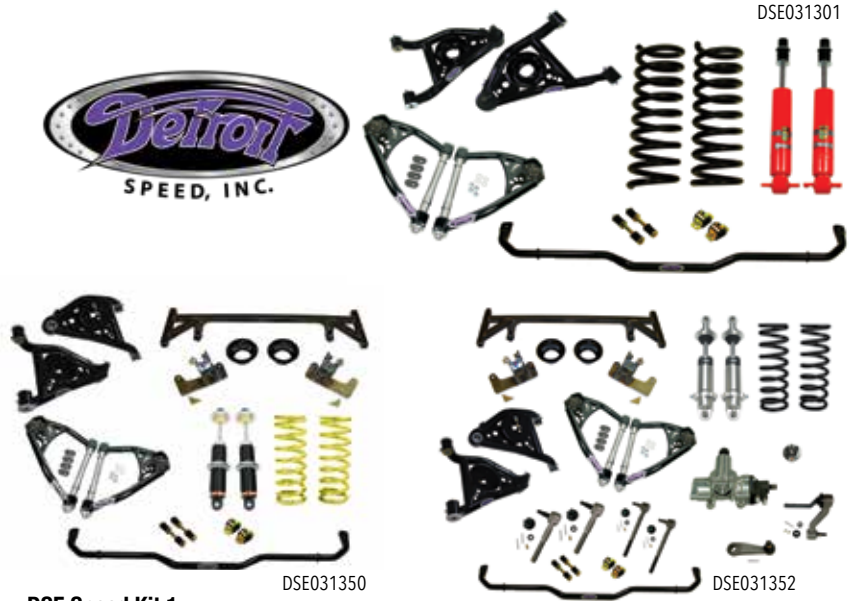


Master Chassis Kit

Typical kit includes fasteners to attach: accelerator lever & support, axle housing springs, axle retainer plates, brake booster & hose, brake cables, brake plates, brake hose retainers & brackets, brake valve & pressure switch, calipers & brackets & shields, upper & lower control arms, control arm bushings, differential cover, driveshaft, engine mounts, fuel filler neck cover, fuel hoses, gas tank, grease fittings, idler arm, leaf spring hangers & front eye, master cylinder & push rod, parking brake control, pitman arm, radius rod & bracket & bumper, shackles (nuts), shocks & brackets, stabilizer bar brackets and end links (includes rubber), steering gear & rag joint, steering linkage & ball joints, speedometer cable trans, suspension bumper, transmission crossmember & insulator, wheel cylinders.

67FS-BB	1967 BB Disc Brakes Mono Leaf	306.99 kit
67FS-DCSB	1967 SB Disc Brakes Mono Leaf	305.99 kit
67FS-DRSB	1967 SB Drum Brakes Mono Leaf	277.99 kit
67FS-L78	1967 BB L-78 Disc Brakes Mono Leaf	326.99 kit
67FS-Z28	1967 SB Z/28 Disc Brakes Mono Leaf	326.99 kit
68FS-BB	1968 BB Disc Brakes Mono Leaf	314.99 kit
68FS-DCSB1	1968 SB Disc Brakes Mono Leaf	315.99 kit
68FS-DCSB4	1968 SB Disc Brakes Multi Leaf	305.99 kit
68FS-DRSB1	1968 SB Drum Brakes Mono Leaf	278.99 kit
68FS-DRSB4	1968 SB Drum Brakes Multi Leaf	308.99 kit
69FS-BB	1969 BB Disc Brakes Multi Leaf	326.99 kit
69FS-DCSB1	1969 SB Disc Brakes Mono Leaf	323.99 kit
69FS-DCSB4	1969 SB Disc Brakes Multi Leaf	332.99 kit
69FS-DRSB1	1969 SB Drum Brakes Mono Leaf	301.99 kit
69FS-DRSB4	1969 SB Drum Brakes Multi Leaf	299.99 kit
70FS-BB	1970-71 BB Disc Brakes Multi Leaf w/ Swaybar	333.99 kit
70FS-F41SB	1970-71 SB Disc Brakes Multi Leaf w/ Swaybar	329.99 kit
70FS-SB	1972 SB Disc Brakes Multi Leaf	335.99 kit
72FS-BB	1972 BB Disc Brakes Multi Leaf w/ Swaybar	318.99 kit
72FS-F41SB	1972 SB Disc Brakes Multi Leaf w/ Swaybar	327.99 kit
72FS-SB	1972 SB Disc Brakes Multi Leaf	327.99 kit
73FS-F41SB	1973 SB Disc Brakes Multi Leaf w/ Swaybar	327.99 kit
73FS-SB	1973 SB Disc Brakes Multi Leaf	327.99 kit
74FS-S	1974 SB Disc Brakes Multi Leaf	276.99 kit
74-FS-F41	1974 SB Disc Brakes Multi Leaf F41	288.99 kit
75FS-S	1975-76 SB Disc Brakes Multi Leaf	280.99 kit
75-FS-F41	1975-76 SB Disc Brakes Multi Leaf F41	296.99 kit
77FS-S	1977 SB Disc Brakes Multi Leaf	288.99 kit
77-FS-F41	1977 SB Disc Brakes Multi Leaf F41	315.99 kit
78FS-S	1978-79 SB Disc Brakes Multi Leaf	360.99 kit
78-FS-F41	1978-7 SB Disc Brakes Multi Leaf F41	316.99 kit
80FS-S	1980-81 SB Disc Brakes Multi Leaf	327.99 kit
80-FS-F41	1980-81 SB Brakes Multi Leaf F41	320.99 kit

No Volume Discount.



DSE Speed Kit 1

This exclusive DSE Speed kit is a complete bolt-on suspension upgrade system designed for ease of installation with no modification to subframe. This kit includes:

- Tubular Upper & Lower Control Arms • Front Sway Bar • Koni Classic Front Shocks • Front 2" Drop Springs

DSE031301	1967-69 SB, LS	2224.99 kit
DSE031304	1967-69 BB	2224.99 kit
DSE031307	1970-81 SB, LS	2274.99 kit
DSE031308	1970-81 BB	2274.99 kit

DSE Speed Kit 2

Speed kit 2 improves the handling and performance to the next level and offers ride height adjustment. This kit includes:

- Tubular Upper & Lower Control Arms • Coilover Conversion Kit • Front Sway Bar • Coilover Springs

Base Shock

DSE031350	1967-69 SB, LS	2549.99 kit
DSE031351	1967-69 BB	2549.99 kit
DSE031354	1970-81 SB, LS	2599.99 kit
DSE031355	1970-81 BB	2599.99 kit

Single Adjustable Shocks

DSE031350S	1967-69 SB, LS	2999.99 kit
DSE031351S	1967-69 BB	2999.99 kit
DSE031354S	1970-81 SB, LS	3049.99 kit
DSE031355S	1970-81 BB	3049.99 kit

Double Adjustable

DSE031350D	1967-69 SB, LS	3599.99 kit
DSE031351D	1967-69 BB	3599.99 kit
DSE031354D	1970-81 SB, LS	3599.99 kit
DSE031355D	1970-81 BB	3599.99 kit

DSE Speed Kit 3

Speed Kit 3 is the most advanced handling system that you can buy for your stock subframe and gives you the steering performance of today's modern cars.

- Tubular Upper & Lower Control Arms • Pitman Arm • Coilover Conversion Kit • Idler Arm • Front Sway Bar • Coilover Springs • DSE 600 Gear w/ Rag Joint
- DSE Tie Rod Adjusters • Inner & Outer Tie Rod Ends

Base Shock

DSE031352	1967-69 SB, LS	3361.99 kit
DSE031353	1967-69 BB	3361.99 kit

Call for 1970-81 Applications.

Single Adjustable Shocks

DSE031352S	1967-69 SB, LS	3704.99 kit
DSE031353S	1967-69 BB	3704.99 kit

Call for 1970-81 Applications.

Double Adjustable

DSE031352D	1967-69 SB, LS	4305.99 kit
DSE031353D	1967-69 BB	4140.99 kit

Call for 1970-81 Applications.

All Speed Kits Ship Oversized. No volume discount.



DSE032001

DSE Hydroformed Subframe

DSE's all new front subframe is a bolt-in replacement for the original stock subframe. It improves the handling and ride quality by utilizing DSE's unique suspension geometry. It is the ONLY subframe in the aftermarket industry with hydroformed frame rails. The hydroformed frame rails feature strength and stiffness, precise quality and repeatability.

This subframe comes complete with: • C6 Corvette upright • Tubular upper and lower control arms • Splined sway bar • Coilover shocks and springs • Power Rack & Pinion Steering
Up to a 10" wide wheel can be packaged without modification to the inner wheel wells.
SB, BB, LS1, LS2 and LS7 engines can be directly bolted in.

Subframe in Bare Metal, Unassembled

- DSE032001 1967-69 SB Chevy or LS..... 6990.99 kit
- DSE032002 1967-69 BB Chevy 6990.99 kit
- DSE032011 1970-81 SB Chevy or LS..... 7184.99 kit
- DSE032012 1970-81 BB Chevy 7184.99 kit

Subframe with Black Powdercoat, Assembled

Subframe is satin black. Upper and lower control arms and sway bar are gloss black.

- DSE032004 1967-69 SB Chevy or LS..... 8399.99 kit
- DSE032005 1967-69 BB Chevy 8399.99 kit
- DSE032014 1970-81 SB Chevy or LS..... 9399.99 kit
- DSE032015 1970-81 BB Chevy 9399.99 kit

Ships Truck Freight to a commercial address.
No volume discount.



DSE010101

DSE Subframe Connectors

These uniquely designed DSE weld in subframe connectors increase your car's stiffness by connecting the front subframe to the rear frame rails. Unlike others, the DSE subframe connectors are barely visible from underneath the car. DSE subframe connectors do not interfere with seat attachment hardware or the installation and removal of the rear leaf spring pocket.

- DSE010101 1967-69 All 214.99 pr.
- DSE010103 1970-81 All 249.99 pr.



DSE030101

DSE031201

DSE031204



DSE030201



DSE030401

DSE Tubular Upper Control Arm Kit

These DSE tubular upper control arms are a direct replacement for your stock control arms and offer better suspension geometry and more strength, which equals better handling and performance. Everything needed to install these new control arms is included in this COMPLETE kit.

- DSE030101 1967-69 All 698.99 kit
- DSE030102 1970-81 All 698.99 kit

Installation should be followed by a professional alignment.
Ships Oversized. No volume discount.

DSE Tubular Lower Control Arm Kit

These DSE tubular lower control arms are a direct replacement for your stock control arms and offer better suspension geometry and more strength which equals better handling and performance. Everything needed to install these new control arms is included in this COMPLETE kit.

- DSE031201 1967-69 w/ Stock Springs..... 724.99 kit
- DSE031204 1970-81 All 794.99 kit

Installation should be followed by a professional alignment.
Ships Oversized. No volume discount.

Delrin Lower Bushings

These Delrin bushings eliminate deflection and greatly improve response. The steel outer housings can be welded to the control arm.

- DSE030201 1967-69 All 155.99 kit
- Works great for street cars as well as race cars.

Urethane Upper Bushings

These urethane bushings are designed as an upgrade over stock for improved handling.

- DSE030401 1967-69 All 61.99 kit

DSE Bounce Bumpers

These urethane bumpers can be used for bounce and rebound control for your stock control arms. The bumper dimensions are 1-9/16" tall and 1-5/8" base diameter.

- DSE030501 1967-69 17.99 pr.



DSE Rear Coilover Suspension Kit

This DSE 3rd generation Camaro Coilover Conversion Kit allows the latest in coilover spring/shock technology to be bolted on, bringing your cars handling and ride into the 21st century with our Detroit Tuned valving. The standard coilover package offers extensive ride height adjustability and is optimized around a 2 in. drop from stock height. Installation requires only minor drilling on the existing axle bracket. Standard shocks have no rebound or compression valving adjustment, single adjustable means you can adjust the rebound dampening, double adjustable means you can adjust both compression and rebound dampening.

- DSE042440 1982-92 Standard..... 1254.99 kit
- DSE042440S 1982-92 Single Adjustable..... 1749.99 kit
- DSE042440D 1982-92 Double Adjustable 2349.99 kit

No volume discount.



DSE060401

DSE Engine Mounting Bracket Kits

The DSE engine mount bracket kits enable easy, no hassle installation of any SBC, BBC or LS engine into the DSE hydroformed subframe. Includes frame side engine mount stands, CNC aluminum adapter plates and polyurethane engine mounts.

- DSE060401 1967-69 LS..... 324.99 kit
- DSE060411 1970-81 SB, BB..... 294.99 kit
- DSE060414 1970-81 LS..... 374.99 kit
- DSE060435 1982-92 LS*..... 324.99 kit

* Moves engine 3/8 inch back from stock V8 engine location.



DSE090101B

DSE Tubular Adjustment Sleeves

Tubular tie rod adjusters improve the strength and integrity of your steering system over stock. The tubular design is stiffer than the OEM split clamp adjuster and weighs less.

DSE090101B 1967-69 Black.....72.99 kit
 DSE090102B 1970-81 Black.....72.99 kit
 No Volume Discount



DSE040110

Heavy Duty Leaf Spring Pocket Kit

The Detroit Speed Heavy Duty Leaf Spring Pocket Kit was engineered to work with stock leaf spring cars as well as cars with the Detroit Speed QUADRALink installed. The kit is significantly stronger than the stock pocket, connects into the doubler plate on the top side floor plan and offers an additional link mounting location that is lower than the stock location. The assembly is bolt-on for easier installation and may be removed after painting. The lower link pocket comes powdercoated and the kit comes with all hardware for installation.

DSE040110 1967-69 All 424.99 kit
 No Volume Discount.



DSE031101



DSE031115

DSE Coilover Springs

These springs provide an excellent balance of handling, performance and ride quality. They are designed to work with our DSE front coilover conversion bracketry kit.

DSE031101 1967-69 SB/LSX 249.99 pr.
 DSE031102 1967-69 BB 148.99 pr.

DSE 2" Dropped Front Coil Springs

These DSE 2" drop coil springs will lower the front of your Camaro easily to give it a pro-touring stance. These springs will also provide great ride and handling.

DSE031115 1967-69 SB, LSX 212.99 pr.
 DSE031118 1967-69 BB 258.99 pr.
 DSE031107 1970-81 SB, LSX 258.99 pr.
 DSE031108 1970-81 BB 258.99 pr.

Ride height may vary depending on weight differences of cars.



DSE010801

DSE010201

DSE Solid Body Mounts

DSE solid body mounts provide a simple approach to eliminating the flex that occurs between the body and sub frame connection. CNC machined from billet aluminum and then hard coated. Stainless bolts sold separately.

DSE010201 1967-81 1/2 Height 156.99 kit
 DSE010301 1967-81 Stock Height 168.99 kit
 DSE010801 Stainless Bolts 114.99 kit

No Volume Discount



DSE031401

Detroit Speed Front Sway Bar Kit

Improve cornering and reduce body roll with this larger diameter hollow sway bar. This larger than stock bar is powdercoated black and comes with everything you need to bolt it on, including greasable polyurethane bushings and end links.

DSE031401 1967-69 All 1-1/8" Hollow259.99 kit
 DSE031402 1970-81 All 1-3/8" Hollow274.99 kit
 No Volume Discount. Ships Oversize 2.



DSE041601

DSE Rear Speed Kit 1

This DSE rear leaf spring suspension kit works great with any DSE front suspension kit. These leaf springs improve handling due to the increased spring rate and are available in either a 2" or 3" dropped ride height. Includes DSE rear leaf springs, heavy duty shackles kit and Koni classic rear shocks.

DSE041601 1967-69 2" Drop Multi894.99 kit
 DSE041602 1967-69 3" Drop Multi894.99 kit
 DSE041631 1967-69 2" Drop Mono924.99 kit
 DSE041632 1967-69 3" Drop Mono924.99 kit
 DSE041637 1970-81 2" Drop Multi924.99 kit
 DSE041636 1970-81 3" Drop Multi924.99 kit

No Volume Discount. Ships Oversize 2. Ride height may vary depending on weight differences of cars.



Shown on mock up rear end.
 Rear end not included

DSE041703

DSE Quadralink Kit

A great way to upgrade from your original leaf spring rear suspension. Unlike other kits on the market, DSE's exclusive new 4-link geometry design is uncompromised to achieve the best possible handling. The DSE Swivel Link allows the suspension to fully articulate with smooth, solid motion and no binding. The rear upper shock crossmember strengthens the rear body and frame section. This kit also includes coilover shocks and springs.

DSE041703 1967-69 Complete Kit 2755.99 kit
 DSE041711 1970-81 Complete Kit 2911.99 kit

Note: Axle brackets require a 3" axle tube.
 Does not include rear end. Ships Oversized. No volume discount.

DSE Quadralink Rear Sway Bar Kit

A great complement to the DSE QUADRALink™! The adjustable sway bar provides an additional way to upgrade the rear suspension.

DSE042203 1967-69347.99 kit
 Ships Oversized. No volume discount.



DSE041222

DSE Mini Tub Kit

This is a complete Detroit Speed & Engineering mini tub kit which includes all of the necessary parts for a complete project package. The original rear seat back and bottom frames must be slightly modified, but the rear seat can be used!

- DSE Deep Tubs • Rear Upper Shock Crossmember
- Front Leaf Spring Pockets (1970-81) • Upper Shock Mounts • Offset Shackles • Rear Leaf Springs • U Bolts • Mini Tub Shocks (1970-81 only) • Adjustable Leaf Spring Pads • Lower Shock Plates • Rear Leaf Delrin Bushing Kit (1970-81 only) • Steel Framerail Fill Panels (1970-81 only)

DSE041203 1967 w/ 2" Drop Springs 1799.99 kit
 DSE041204 1967 w/ 3" Drop Springs 1799.99 kit
 DSE041205 1968-69 w/ 2" Drop Springs 1799.99 kit
 DSE041206 1968-69 w/ 3" Drop Springs 1799.99 kit
 DSE041301 1967-81 Mini Tub Rear Shocks 239.99 pr.
 DSE041222 1970-81 w/ 2" Drop Springs 2219.99 kit
 DSE041223 1970-81 w/ 3" Drop Springs 2219.99 kit

A narrowed fuel tank is required. Ask your sales rep for details!
 These kits require a 3" axle tube. DSE041301 shocks required for 1967-69. Ships Oversized. No volume discount.



DSE090204

600 Steering Gear

DSE's 600 steering gearbox provides you with rack and pinion performance with a bolt in steering gear. Choose from paintable finish or ceramic coated.

- All new, not rebuilt!
- Increased steering feel due to low friction gear design!
- Precision rack and pinion valve technology!
- Late model performance car feel!
- Quick ratio 12.7:1!
- Original power pitman arm may be used!
- 6 pounds lighter than stock!

DSE090204 1967-81 Bare794.99 ea.
 DSE090204C 1967-81 Coated1093.95 ea.
 DSE091202 1967-81 Braided Hose Kit 194.99 kit
 DSE090205 1967-81 Steering Coupler 98.99 ea.

Note: Part number DSE 090205 rag joint and DSE 091202 hose kit are required with this box. Ships Oversize. No Volume Discount.

ENERGY SUSPENSION
Performance POLYURETHANE Components

Control Arms

OE style reproduction upper control arms with ball joint shaft and bushings. OE style reproduction lower control arms are loaded with ball joint and bushings. All control arms are powdercoated in correct semi gloss black and are ready to install. Control arms are available individually or as a specially priced complete kit!



KAR-KIT

OEM BUY'N SAVE WITH KITS

KAR-KIT	1967-69 Complete Control Arm Kit.....	418.03 kit
KAU-6L	1967-69 Upper LH Only.....	115.95 ea.
KAU-6R	1967-69 Upper RH Only.....	115.95 ea.
KAL-9L	1967-69 Lower LH Only.....	129.95 ea.
KAL-9R	1967-69 Lower RH Only.....	129.95 ea.

Ships Oversize. No volume discount.



DS-594

Control Arm Shims

DS-594	1/16	2.95 ea.
DS-595	1/8.....	2.95 ea.



UCA6769-KIT

Tubular Control Arms

Tubular control arms include everything you need to bolt them on and go. They are black powdercoated for a nice looking and long lasting finish. Uppers come loaded with bushings, ball joints and shafts. Lower come loaded with bushings and ball joints.

UCA6769-KIT	1967-69 Uppers/Lowers	397.43 kit
-------------	-----------------------------	------------



9-9151G

9-9154G

Energy Suspension Control Arm Bumpers

These polyurethane control arm bumpers offer increased performance and longevity over stock. Add G to the part number for black. Add R to part number for red.

Example. 3-2134G is for 67-81 in black.

9-9151_	1967-69 All Upper	10.99 pr.
9-9154_	1967-69 All Lower	19.99 pr.
ENGGIT-1_	1967-69 Upper & Lower Kit	27.88 kit



DCE-2410

DCE-4220

Control Arm Bumpers

Correct upper and lower control arm bumpers.

DCE-4220K	1967-69 Kit 4pc.....	23.85 kit
DCE-4220	1967-69 Upper.....	7.95 ea.
DCE-67L	1967 Lower.....	13.99 ea.
DCE-2410	1968-69 Lower.....	7.95 ea.
DCE-2014	1970-81 Upper.....	8.95 ea.
DCE-9222	1970-92 Lower.....	12.95 ea.



FA-1019

Control Arm Shaft Kit

New OEM shaft, bushings, washers & nuts.

FA-1019	1967-69 All	49.99 kit
FA-7073	1970-73 All	62.95 kit
FA-7479	1974-79 All	62.95 kit
FA-8081	1980-81 All	39.95 kit

FB-149



FB-6076

Upper Arm Bushings

FB-149	1967-69 All	6.95 ea.
FB-329	1970-73 All	14.95 pr.
FB-749	1974-79 All	21.00 pr.
FB-801	1980-81 All	16.99 pr.

Lower Arm Bushings

FB-6076	1967-72 All	19.95 pr.
FB-7381	1973-81 All	21.00 pr.

ENERGY SUSPENSION
Performance POLYURETHANE Components



Energy Suspension Control Arm Bushings

These polyurethane body bushings offer increased performance and longevity over stock. Add G to the part number for black. Add R to part number for red. Example. 3-2134G is for 67-81 in black.

3-3101_	1967-69 All	85.99 kit
3-3102_	1970-72 All	85.99 kit
3-3103_	1973-74 1 5/8" Lower	85.99 kit
3-3104_	1973-74 1 3/8" Lower	85.99 kit
3-3105_	1975-79 All	85.99 kit



Upper Control Arm Bolt & Washer Kit BPX-8542

Correct heavy cup washers and correct OEM bolts for retaining upper bushings into arms.

BPX-8542	1967-69 All	19.95 kit
----------	-------------------	-----------



BPX-0918

BPB-1430

Control Arm Bolt Kit

Correct OEM serrated bolts with special locking nuts.

BPX-0918	1967-69 All	18.99 kit
BPX-0919	1970-81 All	19.99 kit

Lower Control Arm Bolt

Original GM bolt with correct reduced body shaft and pointed end. Includes correct locking nut.

BPB-1430	1967-72 All	7.99 ea.
BPB-1450	1973-81 All	6.99 pr.



BUY'N SAVE
WITH KITS



DBB-67K

Body Mounting Kits

Complete with everything you need to mount your body to the frame including correct rubber bushings with steel inserts and factory style OEM flanged head frame bolts with washers!

DBB-67K 1967-81 All55.17 kit



BPB-2230



DRS-67H

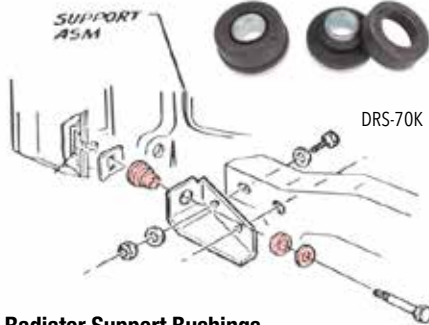
Body Bolt Kit

Correct OEM body mounting kit complete with (4) correct body bolts, (4) correct large washers, (2) correct radiator support bolts, (2) bushing washers, (2) correct spacer washers and (2) nuts & lock washers.

BPB-2230 1967-8124.95 kit



DCI-3025



DRS-70K

Body Mounting Bushing Kit

Correct OEM style rubber bushings with steel inserts for mounting body to frame complete with radiator support bushings.

DCI-3025 1967-8139.95 kit

Radiator Support Bushings

Complete kit with all bushings and hardware for mounting radiator support to car.

DRS-67H 1967-81 All21.52 kit
DRS-70K 1970-73 Side Bushings*26.99 kit

*Not to Frame. Does Not Include Hardware.

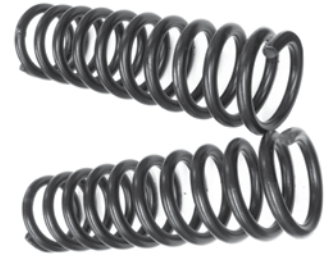


Energy Suspension Body Mounting Kit

These polyurethane body mounts offer increased performance and longevity over stock.

Add G to the part number for black. Add R to part number for red. Example: 3-2134G is for 67-81 in black.

3-4142_ 1967-81 All88.99 kit



Coil Springs

Brand new OEM replacement coil springs sold in matched pairs. These are not cheap aftermarket springs. These springs will restore your car to the original ride height.

DCS-0009	1967-69 SB w/o AC.....	91.99 pr.
DCS-0010	1967-69 SB w/ AC.....	89.99 pr.
DCS-0010	1967-69 BB w/o AC.....	89.99 pr.
DCS-1160	1967-69 BB w/ AC.....	109.99 pr.
DCS-5276	1970-74 SB w/o AC.....	84.99 pr.
DCS-5278	1970-74 SB w/ AC.....	109.99 pr.
DCS-5006	1975-81 SB w/o AC.....	99.99 pr.
DCS-576	1975-81 SB w/ AC.....	99.99 pr.
DCS-586	1977-79 Z/28 and HD w/ AC.....	119.99 pr.
DCS-6486	1980-81 Z/28 and HD w/ AC.....	109.99 pr.
DCS-70BB	1970-81 BB w/o AC.....	119.99 pr.
DCS-70BBAC	1970-81 BB w/ AC.....	109.99 pr.

DSI-170



Coil Spring Insulators

Correct rubber insulators for the top of the front coils.

DSI-170 1967-81 All17.99 pr.



RSM-1003B

Coil Spring Upper Mounts

Replacement coil spring upper mounts which are part of the subframe. Weld in.

RSM-1003B 1967-6934.95 pr.



RFR-646

SubFrame Repair Plates

Stamped steel plates for repairing your rusted or damaged subframe mounting points. Complete set of (6) includes radiator support.

RFR-646 1967-81*56.99 kit

*Modifications will be required to fit 70-81 applications.



DPX-310

GM Shock Kit

Complete kit featuring 4 gas charged shocks, correct front & rear hardware, shock gray paint & 4 shock ID decals.

DPX-310	1967-69 All w/ Multi Leaf.....	128.96 kit
DPX-320	1970-81 All	140.86 kit
NT-2005	1967-81 Front Only.....	29.99 ea.
NR-1010	1968-69 Rear Only for Multi Leaf.....	29.95 ea.
NT-88R	1970-81 Rear Only.....	36.95 ea.

No Volume Discount.



KYB-68F

KYB Excel-G Shock Kit

Are you looking for more performance from your shocks and a smooth ride? This KYB shock kit is the answer! They feature velocity sensing valving, hard chrome pistons rods, twin tube design, low pressure nitrogen gas to prevent foaming of the oil, iron pistons & guide tubes. These shocks are great for normal to moderate driving! Our kit includes: 2) front shocks, 2) rear shocks and hardware.

KYB-679F-KIT	1967-69 All Front & Rear.....	114.95 kit
KYB-781F-KIT	1970-81 All Front & Rear.....	114.95 kit
KYB-68F	1967-69 Front Only.....	34.95 ea.
KYB-64F	1970-81 Front Only.....	34.95 ea.
KYB-679R	1967-69 Rear* Only.....	29.95 ea.
KYB-64F	1970-81 Front Only.....	34.95 ea.
KYB-70R	1970-81 Rear Only.....	31.95 ea.
KYB-107	1967-69 Rear Mono Leaf Adapter ...	14.95 ea.

*Must use KYB-107 for cars with mono leaf springs.
No volume discount.



DSS-F72

Spiral Shocks

New GM licensed reproductions of the original spiral twist shocks in correct gray color.

DSS-F72	1967-69 All Front No Part #'s.....	89.99 ea.
3192419	1967-69 Front GM #3192419	96.99 ea.
3192477	1967-69 Front Z/28 GM #3192477	89.95 ea.
3192831	1968-69 Rear Multi No #'s.....	96.99 ea.
DSS-67M	1967-69 Rear Mono No #'s.....	96.99 ea.
DSS-69M	1967-69 Rear Multi GM #3192832.....	8.95 ea.
3192831	1967-69 Rear Mono GM #3192831.....	96.99 ea.
3192851	1967-69 Rear Z/28 GM #3192851	96.99 ea.

No Volume Discount



Koni Front & Rear Shock Kits

Are you looking for more performance from your Camaro's shocks, and a smooth ride with improved ride and handling qualities? This Koni shock kit is the answer! Koni Classic shocks provide modern shock absorber technology for early muscle cars. Our kit includes: (2) front shocks, (2) rear shocks.

KONI679FMO	1967-69 Mono Leaf.....	432.36 kit
KONI679FMU	1967-69 Multi Leaf.....	451.16 kit
KONI7081F	1970-81 Multi Leaf.....	469.96 kit

No volume discount.



AAS-GSK-6769B



Ground Up Exclusive Aldan Front Suspension Kits

Ground Up's exclusive front suspension kit has the parts you need to upgrade your Car's handling. We bundle together Ground Up's Tubular Front Control Arms and a set of Aldan American Coil-Overs in a specially discounted package. With Ground Up's exclusive front suspension kit, you'll be carving the corners in no time!

AAS-GSK-6769S	1967-69 Small Block.....	836.93 kit
AAS-GSK-6769B	1967-69 Big Block.....	836.93 kit

No volume discount.



AAS-300116

Aldan American Coil Over Kits

Aldan Road Comp kits are designed to convert your suspension to coil-overs. Aldan Phantom Series, single adjustable coil-overs deliver superior handling and ride quality for a drastic improvement over stock suspension. Aldan High tensile, high travel coil-springs provide greater consistency over stock springs. Aldan's rear bolt-on shock absorber kit includes 2 TrueLine Series shocks, 2 brackets, 2 T-Bars and hardware. Uses OEM shock mounting locations. TrueLine adjustable shock absorbers are designed to work with factory and aftermarket springs to add a more consistent, smoother ride.

Complete Front & Rear Kits

AAS-300114	1967-69 SB Mono Leaf.....	910.99 kit
AAS-300115	1967-69 BB Mono Leaf.....	910.99 kit
AAS-300116	1967-69 SB Multi Leaf.....	910.99 kit
AAS-300117	1967-69 BB Multi Leaf.....	910.99 kit
AAS-300108	1970-81 SB All.....	905.99 kit
AAS-300109	1970-81 BB All.....	905.99 kit

Front Coil Over Kits

AAS-AFBFMS	1967-69 450lb Springs.....	518.99 kit
AAS-AFBFHS	1967-69 550lb Springs.....	518.99 kit
AAS-AFBFMS3	1970-81 450lb Springs.....	513.99 kit
AAS-AFBFHS3	1970-81 550lb Springs.....	513.99 kit

Rear Shock Kits

AAS-100103	1967-69 Mono Leaf.....	392.99 kit
AAS-100104	1967-69 Multi Leaf.....	392.99 kit
AAS-100101	1970-81 All.....	392.99 kit

Thrust Bearing Set

Thrust bearings make it easier to adjust spring tension and ride height when installed at the base of a coil spring and coilover spring seat. Includes 2 thrust bearings and 4 steel washers. 2.5 in. inner diameter, 3.225 in. outer diameter.

AAS-ALD-27	Bearings & Spanner Wrench.....	67.99 kit
AAS-ALD-26	Bearings Only.....	39.99 kit
AAS-ALD-1	Spanner Only.....	28.99 ea.

No volume discount.

DSR-384



Shock Mounting Hardware

Correct GM rubber bushings, cup washer and nut for one shock.

DSR-384	1967-81 All Front.....	7.95 kit
---------	------------------------	----------

9-8101G



Energy Suspension Upper Shock Bushing

These polyurethane body bushings offer increased performance and longevity over stock.

Add G to the part number for black. Add R to part number for red. Example. 9-8101G is for 67-81 in black.

9-8101_	1967-81 All 4pc.....	4.99 kit
---------	----------------------	----------

BPX-9715



Shock Mounting Kit

Correct GM front shock mounting kit with (4) clips and (4) OEM bolts/washers.

BPX-9715	1967-81 All Front.....	6.95 kit
----------	------------------------	----------

DG-885



Shock Mounting Plates

Correct reproduction shock tower plates.

DG-724	1967-69 Bolt In.....	8.99 ea.
DG-885	1967-69 Weld In.....	13.99 ea.

Shock Mounting Stud

Correct rear shock mounting stud.

DR-041	1967-81 Rear.....	8.95 ea.
--------	-------------------	----------



NEW PRODUCT: QA1 SUSPENSION



QA1 Upper & Lower Tubular Control Arms

QA1's Street & Race Control Arms. The street arms use a factory replacement ball joint and polyurethane pivot bushings. These work great on vehicles used primarily for cruising and long distance events. The race arms utilize a QA1 Low Friction Ball Joint and low friction, low deflection pivot bushings, providing the added performance needed for drag racing, pro-touring and hardcore street applications. Configured for QA1 Pro Coil Systems, these control arms feature powder coated tubular construction for increased strength and great looks. A bolt-in spring adapter is available separately to allow the control arms to be used with stock springs. All of the upper arms feature an offset cross shaft letting you quickly and easily adjust camber. All of these arms are designed to add 3-4 degrees of caster and 0.5 to 1 degree of negative camber when used together. Includes mounting hardware. Made in the USA

Street Arms

QA1-52417	1967-69 All Upper	449.99 pr.
QA1-52419	1967-69 All Lower	629.99 pr.
QA1-52418	1970-81 All Upper	449.99 pr.
QA1-52420	1970-81 All Lower	629.99 pr.
QA1-52468	1982-92 All Lower	629.99 pr.

Race Arms

QA1-52317	1967-69 All Upper	549.99 pr.
QA1-52319	1967-69 All Lower	649.99 pr.
QA1-52318	1970-81 All Upper	549.99 pr.
QA1-52320	1970-81 All Lower	649.99 pr.
QA1-52368	1982-92 All Lower	649.99 pr.

No volume discount.



QA1-52418



QA1-52420



QA1-52816

QA1 Sway Bars

Give your chassis the stability it needs to keep your tires planted on the road. These sway bars are an easy bolt-on upgrade to help reduce body roll and handle corners better. For maximum strength and durability, QA1 sway bars are manufactured from either light-weight hollow-core (4130) chromoly steel or heavy duty solid-core (1045) cold formed steel. The bars are formed using precision CNC equipment for a true bolt-on installation, then gloss black powder coated for durability and corrosion resistance. Sway bars include new mounting components to replace old and worn out sway bar bushings and end links. Made in the USA.

QA1-52816	1967-69 All Front 1 1/4"	249.99 ea.
QA1-52893	1970-81 All Front 1 3/8"	259.99 ea.
QA1-52810	1982-92 All Front 1 3/8"	259.99 ea.
QA1-52874	1993-02 All Front 1 3/8"	259.99 ea.
QA1-52875	1982-02 All Rear 1	209.99 ea.
QA1-52812	1982-92 All Front&Rear 1 3/8"/1"	469.99 kit
QA1-52816	1993-02 All Front&Rear 1 3/8"/1"	249.99 ea.

No volume discount.



QA1-5204

QA1 Lower Rear Trailing Arms

QA1's Lower boxed trailing arms use polyurethane bushings on both ends, for a long-lasting finish, tubular and boxed trailer arms are powder coated gloss black, while the adjustable arms are zinc plated and anodized. These trailing arms have fluted, greaseable polyurethane bushings, which are superior to the stock rubber bushings. The relocation brackets lower the mounting point of the rear trailing arms. A must for lowered vehicles, they correct the trailing arm angle while raising the instant center of the vehicle, which improves forward bite and eliminates rear squat during hard acceleration. Two non-stock mounting locations are available in addition to the stock location, and they will accept QA1, OEM, or any other aftermarket lower trailing arms on the market. Made in the USA.

QA1-5204	1982-92 All Trailing Arms	269.99 pr.
QA1-5275	1982-92 All Trailing Arm Brackets.....	94.99 pr.

No volume discount.



QA1-5202

QA1-5222

QA1 Panhard Bars

QA1 Panhard Bars feature an improved design that resists unwanted flex and twisting, keeping the axle properly located under the chassis for improved cornering and drivability under all conditions. Adjustable Panhard Bars are needed for lowered cars to maintain proper axle alignment. Panhard bars include our fluted, greaseable graphite/polyurethane bushings for a long, trouble free life. Made in the USA.

QA1-5222	1982-02 All Adjustable.....	149.99 ea.
QA1-5202	1982-02 All Non-Adjustable.....	94.99 ea.

No volume discount.

QA1 Tie Rod Sleeves

These QA1 Heavy Duty Tie Rod Sleeves are manufactured from solid steel hex stock then zinc plated for durable good looks and corrosion resistance. These are stronger than stock OE split sleeves and easier to adjust. Made in the USA.



QA1-5251	1967-69 All.....	57.99 pr.
QA1-5252	1970-81 All.....	57.99 pr.
QA1-5250	1982-92 All.....	57.99 pr.

No volume discount.



QA1-52801

QA1 Adjustable Rear Toe Links

The QA1 Adjustable Rear Toe Links help keep tires planted firmly on the ground and pointed in the right direction to improve handling performance. They are constructed with aluminum adjustment sleeves, 5/8th inch heavy duty rod ends and urethane bushings for strength and stability. They replace OEM arms produced from stamped steel that can deform under hard cornering loads and use an eccentric for rear toe adjustment that is susceptible to slippage. The rod end on the QA1 Toe Links allow the suspension to operate smoothly throughout its full range of motion. The kit includes lockouts for the eccentrics to stop any movement of the rear toe adjustment and relocate the adjustment point onto the toe link for a finer and easier adjustment. Made in the USA.

QA1-52801	2010-11 SS Rear Toe Links.....	259.99 pr.
-----------	--------------------------------	------------

No volume discount.



QA1-5282

QA1 Torque Arms

QA1's Torque Arms feature strong tubular construction and a graphite/polyurethane front bushing to reduce wheel hop caused by excessive flex under hard accelerations and cornering. Adjustable Torque Arms are built from 1 inch x 0.120 inch wall tubing. The adjustable arm features a 3/4 inch spherical rod ends, allowing easy pinion angle adjustment. Powder coated black for durability with grade 8 bolts. Made in the USA. Fits vehicles with GM corporate 10-bolt rear ends in which front locator of stock torque arms has lips facing away from driveshaft.

QA1-5282	1982-02 All* Adjustable.....	329.99 ea.
QA1-5280	1982-02 All* Non-Adjustable.....	229.99 ea.

*Can be used on 1982-83 Camaro/Firebird with 1984 or newer mount. No volume discount.



QA1-DK02-GMF4

QA1 Drag Race Suspension Kits

Looking for a better launch, straight line stability and consistent performance? Turn to QA1's drag racing suspension kits for a full-vehicle upgrade that fits your needs. Available in two different levels of performance, these drag racing kits offer easy, bolt-in installation and seamlessly works with whatever OE component each piece attaches to.

Level 1 Includes: Front R series Stocker Star shocks, upper street control arms, lower street control arms, stock spring seat adapter, tie rod adjuster sleeves.

Level 2 Includes: Front Double Adjustable Pro Coil shock system, thrust bearing/spanner wrench kit, Upper race control arms, Lower race control arms, tie rod adjuster sleeves, ball joint tool kit. Available with and without shocks.

Level 1 Kits

QA1-DK01-GMF1	1967-69 w/ Shocks.....	1567.99 kit
QA1-DK11-GMF1	1967-69 w/o Shocks.....	1227.99 kit
QA1-DK01-GMF2	1970-81 w/ Shocks.....	1887.99 kit
QA1-DK11-GMF2	1970-81 w/o Shocks.....	1227.99 kit
QA1-DK01-GMF3	1982-92 w/ Shocks.....	1947.99 kit
QA1-DK11-GMF3	1982-92 w/o Shocks.....	1112.99 kit
QA1-DK01-GMF4	1993-02 w/ Shocks.....	1993.99 kit
QA1-DK11-GMF4	1993-02 w/o Sshocks.....	959.99 kit

Level 2 Kits

QA1-DK02-GMF1	1967-69 w/ Shocks.....	2042.99 kit
QA1-DK12-GMF1	1967-69 w/o Shocks.....	1287.99 kit
QA1-DK02-GMF2	1970-81 w/ Shocks.....	2503.99 kit
QA1-DK12-GMF2	1970-81 w/o Shocks.....	1287.99 kit
QA1-DK02-GMF3	1982-92 w/ Shocks.....	3794.99 kit
QA1-DK12-GMF3	1982-92 w/o Shocks.....	1792.99 kit
QA1-DK02-GMF4	1993-02 w/ Shocks.....	2597.99 kit
QA1-DK12-GMF4	1993-02 w/o Shocks.....	1054.99 kit

No volume discount.

NEW PRODUCT: QA1 SUSPENSION (CONTINUED)

QA1 Performance Handling Kits

Want better handling? Turn to QA1's handling suspension kits for the best ride that fits your needs. Available in three different levels of performance, these handling kits offer easy, bolt-in installation and seamlessly works with whatever OE component each piece attaches to. You can build your car in stages using our parts list as a road map to get to the level of performance you want and have the peace of mind knowing you won't have compatibility issues.



QA1-HK12-GMF3

1967-81 Kits

Level 1 Includes: Front non-adjustable Stocker Star shocks, front sway bar, tie rod adjuster sleeves.

- QA1-DK01-GMF1 1967-69 w/ Shocks.....1567.99 kit
- QA1-DK01-GMF2 1970-81 w/ Shocks.....1887.99 kit

Level 2 Includes: Front single adjustable Pro coil shock system, front sway bar, thrust bearing/spanner wrench kit, upper street control arms, lower street control arms, tie rod adjuster sleeves.

- QA1-DK02-GMF1 1967-69 w/ Shocks.....2042.99 kit
- QA1-DK12-GMF1 1967-69 w/o Shocks.....1287.99 kit
- QA1-DK02-GMF2 1970-81 w/ Shocks.....2503.99 kit
- QA1-DK12-GMF2 1970-81 w/o Shocks.....1287.99 kit

Level 3 Includes: Front double adjustable Pro coil shock system, front sway bar, thrust bearing/spanner wrench kit, upper race control arms, lower race control arms, tie rod adjuster sleeves, ball joint tool kit.

- QA1-HK03-GMF1 1967-69 w/ Shocks.....2292.99 kit
- QA1-HK13-GMF1 1967-69 w/o Shocks.....1537.99 kit
- QA1-HK03-GMF2 1970-81 w/ Shocks.....2763.99 kit
- QA1-HK13-GMF2 1970-81 w/o Shocks.....1547.99 kit

1982-02 Kits

Level 1 Includes: Front single adjustable Stocker Star struts, rear single adjustable Stocker Star shocks, front & rear sway bars, tie rod adjuster sleeves, boxed rear lower trailing arms, tubular panhard bar, non adjustable torque arm.

- QA1-HK01-GMF3 1982-92 w/ Shocks.....1917.99 kit
- QA1-HK11-GMF3 1982-92 w/o Shocks.....1122.99 kit
- QA1-DK11-GMF4 1993-02 w/ Shocks.....959.99 kit

Level 2 Includes: Front single adjustable Stocker Star struts, rear single adjustable Stocker Star shocks, caster camber plates, thrust bearing/spanner wrench kit, front & rear sway bars, tie rod adjuster sleeves, lower front street control arms, boxed rear lower trailing arms, trailing arm relocation brackets, tubular panhard bar, non adjustable torque arm.

- QA1-HK02-GMF3 1982-92 w/ Shocks.....3524.99 kit
- QA1-HK12-GMF3 1982-92 w/o Shocks.....1902.99 kit
- QA1-HK02-GMF4 1993-02 w/ Shocks.....2287.99 kit
- QA1-HK12-GMF4 1993-02 w/o Shocks.....1064.99 kit

Level 3 Includes: Front double adjustable pro-coil struts, rear double adjustable pro-coil shocks, caster camber plates, thrust bearing/spanner wrench kit, front & rear sway bars, tie rod adjuster sleeves, lower front race control arms, boxed rear lower trailing arms, trailing arm relocation brackets, tubular adjustable panhard bar, adjustable torque arm, ball joint tool kit.

- QA1-HK03-GMF3 1982-92 w/ Shocks.....4054.99 kit
- QA1-HK13-GMF3 1982-92 w/o Shocks.....2052.99 kit
- QA1-HK03-GMF4 1993-02 w/ Shocks.....2857.99 kit
- QA1-HK13-GMF4 1993-02 w/o Shocks.....1314.99 kit

No volume discount for all.

QA1 Front Coilover Shock Kits

The QA1 Pro Coil System is a great option for anyone looking for fully adjustable ride height and valving control. Choose a spring rate and adjustability that fits your driving style, adjust the valving to match and you are on your way. These shocks also utilize a fully threaded body that allows you to adjust your ride height for the perfect stance or to finely tune the weight balance for superior handling. Specially designed for QA1's Pro Coil Systems, the American-made lightweight high travel springs have fewer coils and a smaller wire diameter, resulting in increased travel due to the larger distance between the coils. They reduce unsprung weight and react faster, optimizing suspension performance. Adjustable Pro Coil System Features: Available in MOD Series, independent compression and rebound double adjustable, simultaneous compression and rebound adjustable, or Drag R Series adjustable. Lightweight Billet Aluminum Coilover Shocks High Travel Springs Easy, Bolt-In Installation Ride Height Adjustable, Made in the USA
SA = single adjustable DA = double adjustable
DR = drag series adjustable MO = mod series



QA1-GS401-10400A

QA1-GD501-10550C

Small Block Included spring rate: 400 Lbs, ideal for front axle weight between 1801-1900 Lbs.

- QA1-GS401-10400A 1967-69 SA.....545.99 kit
- QA1-GD401-10400A 1967-69 DA.....705.99 kit
- QA1-GR401-10400A 1967-69 DR.....605.99 kit
- QA1-MG401-10400A 1967-69 MO.....1525.99 kit

Big Block Included spring rate: 500 Lbs, ideal for front axle weight between 2001-2100 Lbs.

- QA1-GS401-10500A 1967-69 SA.....545.99 kit
- QA1-GD401-10500A 1967-69 DA.....705.99 kit
- QA1-GR401-10500A 1967-69 DR.....605.99 kit
- QA1-MG401-10500A 1967-69 MO.....1525.99 kit

Small Block Included spring rate: 450 Lbs, ideal for front axle weight between 1901-2000 Lbs.

- QA1-GS501-10450C 1970-81 SA.....545.99 kit
- QA1-GD501-10450C 1970-81 DA.....705.99 kit
- QA1-GR501-10450C 1970-81 DR.....605.99 kit
- QA1-MG501-10450C 1970-81 MO.....1525.99 kit

Big Block Included spring rate: 550 Lbs, ideal for front axle weight between 2101-2200 Lbs.

- QA1-GS501-10550C 1970-81 SA.....545.99 kit
- QA1-GD501-10550C 1970-81 DA.....705.99 kit
- QA1-GR501-10550C 1970-81 DR.....605.99 kit
- QA1-MG501-10550C 1970-81 MO.....1525.99 kit

Street Included spring rate: 250 Lbs, ideal for nice ride & handling.

- QA1-HS606S-12250 1982-92 SA.....719.99 kit
- QA1-HD606S-12250 1982-92 DA.....939.99 kit
- QA1-HR606S-12250 1982-92 DR.....759.99 kit

Track Included spring rate: 325 Lbs, ideal for firm ride with great cornering.

- QA1-HS606S-12325 1982-92 SA.....719.99 kit
- QA1-HD606S-12325 1982-92 DA.....939.99 kit
- QA1-HR606S-12325 1982-92 DR.....759.99 kit

Street Included spring rate: 300 Lbs, ideal for nice ride & handling.

- QA1-GS502-15300 1993-02 SA.....545.99 kit
- QA1-GD502-15300 1993-02 DA.....705.99 kit
- QA1-GR502-15300 1993-02 DR.....605.99 kit

Track Included spring rate: 325 Lbs, ideal for firm ride with great cornering.

- QA1-GS502-15325 1993-02 SA.....545.99 kit
- QA1-GD502-15325 1993-02 DA.....705.99 kit
- QA1-GR502-15325 1993-02 DR.....605.99 kit

No volume discount.



QA1-TN505

QA1-TN802

QA1 Stocker Star Shocks

These stock mount adjustable front & rear shocks are available for your Camaro. Available in double, single, Drag R Series and non-adjustable options, these shocks provide exactly the ride you want, high performance handling and great looks. These QA1 aluminum shocks are 100% dyno tested and serialized before leaving our factory. Made in the USA. Easy, bolt-in installation.

NA = non-adjustable SA = single adjustable
DA = double adjustable DR = drag series adjustable

- QA1-TN505 1967-69 Front NA114.99 ea.
- QA1-TS505 1967-69 Front SA159.99 ea.
- QA1-TD505 1967-69 Front DA239.99 ea.
- QA1-TR505 1967-69 Front DR169.99 ea.
- QA1-TN507 1970-81 Front NA114.99 ea.
- QA1-TS507 1970-81 Front SA159.99 ea.
- QA1-TD507 1970-81 Front DA239.99 ea.
- QA1-TR507 1970-81 Front DR169.99 ea.
- QA1-TN802 1967-69 Rear NA Multi Leaf114.99 ea.
- QA1-TS802 1967-69 Rear SA Multi Leaf159.99 ea.
- QA1-TS802 1967-69 Rear DA Multi Leaf159.99 ea.
- QA1-TN703 1967-69 Rear NA Mono Leaf114.99 ea.
- QA1-TS703 1967-69 Rear SA Mono Leaf159.99 ea.
- QA1-TS703 1967-69 Rear DA Mono Leaf159.99 ea.
- QA1-TN702 1970-81 Rear NA Multi Leaf114.99 ea.
- QA1-TS702 1970-81 Rear SA Multi Leaf159.99 ea.
- QA1-TS702 1970-81 Rear DA Multi Leaf159.99 ea.
- QA1-TN704 1982-02 Rear NA Multi Leaf114.99 ea.
- QA1-TS704 1982-02 Rear SA Multi Leaf159.99 ea.
- QA1-TS704 1982-02 Rear DA Multi Leaf159.99 ea.

No volume discount.

QA1-RCK52327



QA1 Rear Coilover Shock Kits

QA1 bolt-in rear coil-over conversion kits. These kits include specially designed USA made mounting brackets, single, double or MOD Series adjustable aluminum shocks specific to 3rd and 4th Generation F-Bodies, springs and all necessary hardware. Single adjustable shocks provide 18 positions of simultaneous rebound and compression adjustment while QA1's double adjustable shocks provide 18 positions of compression adjustment and 18 positions of rebound adjustment, for a total of 324 possible valving combinations. MOD Series shocks also feature a double adjustable design but include adjustable low-speed bleed as well for fully independent control over compression and rebound characteristics. These shocks also utilize a fully threaded body allowing for ride height adjustability. Multiple spring rate options are also available, and have been successfully tested in various applications, from casual street driving to hardcore race applications. With our highly popular adjustable struts and the addition of the rear coilover conversion kit, you can now get a complete suspension makeover for both ends of the vehicle. Bolt-In installation. Made in the USA.
SA = single adjustable DA = double adjustable
DR = drag series adjustable MO = mod series

Included spring rate: 110 Lbs, ideal for soft ride feel.

- QA1-RCK52327 1982-92 SA613.99 kit
- QA1-RCK52331 1982-92 DA773.99 kit

Included spring rate: 130 Lbs, ideal for medium ride feel.

- QA1-RCK52328 1982-92 SA613.99 kit
- QA1-RCK52332 1982-92 DA773.99 kit

Included spring rate: 150 Lbs, ideal for firm ride feel.

- QA1-RCK52329 1982-92 SA613.99 kit
- QA1-RCK52333 1982-92 DA773.99 kit

No volume discount.



UMI-266501-B



UMI Corner Max Kit, Race & Street Handling

UMI's Corner Max front end kits for 1970-1981 Camaro are a comprehensive system with our best corner carving parts under one easy to find part number. The Corner Max system combines geometry corrected a-arms with tall ball joints, higher rate springs, UMI rebound adjustable monotube shocks, heavy duty sway bar and a bump steer kit. The foundation of the kit includes our coilover-only lower a-arms featuring caster improvement, tall ball joints and the ability to remove the spring and shock without taking the spindle apart. The upper a-arm features rod ends for smooth operation and the ability to adjust without shims. The 1-5/16th inch sway bar upgrade complete with UMI's fabricated end links reduces body roll and helps speed transitions. Racing coilover springs are paired with UMI's rebound adjustable coilover monotube shocks. Fine-tuning is accomplished with a UMI bump steer kit. The Corner Max kit is built to make the stock GM clip work as well as it possibly can with a true bolt-on kit. All UMI Performance parts are fabricated and raced with pride out of Philipsburg, PA - USA.

UMI-266501-B	1970-81 Black	2599.99 kit
UMI-266501-R	1970-81 Red	2599.99 kit

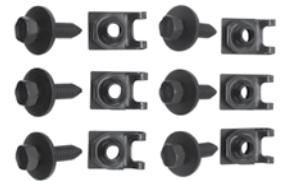


DFB-13L

Leaf Spring Mounting Brackets

Correct brackets for mounting the front of the leaf spring to the body.

DFB-13L	1967-69 LH	34.95 ea.
DFB-13R	1967-69 RH	34.95 ea.
DFB-13K	1967-69 LH/RH	75.80 kit
DFB-16L	1970-81 LH	36.95 ea.
DFB-16R	1970-81 RH	36.95 ea.
DFB-16K	1970-81 LH/RH	79.00 kit



BLS-1130

Front Leaf Spring Bracket Hardware Kit

Correct bolts and special clips for mounting front leaf spring brackets to car. This kit includes (6) OEM bolts and (6) J nuts.

BLS-1130	1967-81 All	16.95 kit
----------	-------------------	-----------

LEAF SPRINGS



DTR-7412

Replacement Leaf Springs

These are excellent OEM replacement leaf springs which will restore the proper rear ride height.

DTR-7910	1967-69 Mono Leaf	281.99 pr.
DTR-7412	1967-81 4 Leaf.....	199.95 pr.
DTR-7815	1967-81 5 Leaf.....	179.95 pr.

No Volume Discount. Ships Oversize 2.



DLK-67-SK

Leaf Spring Mounting Super Kit

This kit has everything you need to install your leaf springs. The kit includes spring pads, front eye bolts, front mounting bracket hardware, complete rear shackles, U-bolts and T-bolts.

DLK-67-SK	1967-69 Mono	134.56 kit
DLK-69M-SK	1967-69 Multi.....	118.64 kit
DLK-70M-SK	1970-81 Multi.....	125.04 kit

No volume Discount.



DLK-69M

Leaf Spring Mounting Kit

This kit comes complete with (4) correct pads, (2) U-bolts and (4) T bolts with (8) nuts. Does one car.

DLK-67	1967-69 Mono.....	54.00 kit
DLK-69M	1967-69 Multi.....	50.80 kit
DLK-70M	1970-81 Multi.....	54.00 kit



DTR-4RBK

Leaf Spring Rebuild Kits

Includes the correct hardware to disassemble the leaf springs and put them back together like new.

DTR-4RBK	1967-81 4 Leaf.....	36.95 kit
DTR-5RBK	1967-81 5 Leaf.....	41.95 kit



DSB-99

Leaf Spring Eye Bushing

Correct front eye bushing.

DSB-99	1967-81 All	19.95 ea.
--------	-------------------	-----------



BBB-2743

Front Leaf Spring Eye Bolt

Correct OEM bolt with washers and special nut for mounting front leaf spring to car. 2 required.

BBB-2743	1967-81 All	3.95 ea.
----------	-------------------	----------



BPB-4829

U Bolt

Correct U bolt & nuts for multi leaf springs.

BPB-4829	U Bolt	5.95 ea.
----------	--------------	----------



BPB-2949

T Bolt

Correct T bolt & nut for mono leaf springs.

BPB-2949	T Bolt	6.95 ea.
----------	--------------	----------



Leaf Spring Pads

Correct rubber pads for mounting springs.

DTE-7818	1967-69 Mono.....	6.95 ea.
DTE-67	1967-69 Multi.....	5.95 ea.
DTE-70U	1970-81 Upper.....	7.95 ea.
DTE-70L	1970-81 Lower.....	7.95 ea.

DTE-67



3-3112G

Energy Suspension Leaf Spring Pads

Be in control of your suspension while you're maneuvering through turns, doing drag-style launches and braking.

Add G to the part number for black. Add R to part number for red. Example. 3-2134G is for 67-81 in black.

3-6112_	1967-69 Multi.....	27.99 kit
3-6113_	1967-69 Mono.....	24.99 kit
3-6111_	1970-81 Multi.....	28.99 kit



NJX-283

Leaf Spring Plates

Correct lower leaf spring mounting plates.

NXJ-7L	1967 Mono LH.....	44.95 ea.
NXJ-7R	1967 Mono RH.....	44.95 ea.
NXJ-7R	1968-69 Mono LH = RH.....	44.95 ea.
NXJ-283	1968-69 Multi LH = RH.....	42.95 ea.
NXJ-285	1970-81 Multi LH = RH.....	42.95 ea.



DSP-500

Leaf Spring Perch

Correct leaf spring perches for rear axle.

DSP-500	1967-69 Multi.....	69.95 pr.
DSP-501	1967-69 Mono.....	69.95 pr.



NRD-0045

Leaf Spring Rear Shackle Kit

OE style reproduction shackle kit complete with plates, bushings, bolts and nuts. Does 1 car.

NRD-0045	1967-70 All.....	59.95 kit
NRD-0050	1971-81 All.....	59.95 kit



Rear Shackle Bushings

DSB-8R

OE style reproduction rear shackle bushings.

DSB-8R	1967-69 All.....	32.95 kit
DSB-70	1970-81 All.....	44.99 kit



3-2136G

Energy Suspension Rear Shackle Kits

Be in control of your suspension while you're maneuvering through turns, doing drag-style launches and braking.

Add G to the part number for black. Add R to part number for red. Example. 3-2134G is for 67-81 in black.

3-2134_	1967-81 Multi.....	125.99 kit
3-2136_	1967-69 Mono.....	125.99 kit

Bushings only

3-2103_	1970-81 Multi.....	70.99 kit
3-2101_	1967-69 Mono.....	70.99 kit



DSE041101



Mono-to-Multi Leaf Conversion Kit

Use this kit to convert your original mono-leaf spring to multi-leaf spring configuration. Kit includes: U-bolts, a hardcoated steel locating pad, aluminum spacers, washers & nuts.

DSE041101	1967-69.....	104.99 kit
-----------	--------------	------------

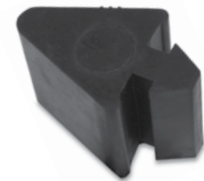
SSM-1304

SSM-1319

Southside Machine Lower Traction Lift Bars
SouthSide Machine lift bars use the axle torque to increase your tire traction by lowering the center of gravity on the rear axle. This forces torque downward instead of forward, planting your rear tires by pushing them down into the pavement. This greatly reduces wheel spin and eliminates axle-hop. If you're not using these classic SSM lift bars, you'll just be spinning your wheels!

SSM-1304	1967-69.....	199.95 pr.
SSM-1319	1970-81.....	199.95 pr.

No volume discount.



DAB-6X

Rear End Pinion Bumper

Excellent reproduction of the often missing or damaged rear pinion bumper which is required to keep the pinion housing from contacting the floor.

DAB-6X	1967-69.....	14.95 ea.
--------	--------------	-----------



DAB-202



DAB-083L

Axle Housing Bumpers

Excellent reproduction of the often missing or damaged axle housing bumper.

DAB-202	1967.....	21.95 ea.
DAB-083L	1968-69 LH.....	27.95 ea.
DAB-083R	1968-69 RH.....	27.95 ea.
DAB-088	1970-81.....	21.95 ea.



DAA-136

Front Sway Bar Kit

Eliminate poor handling by installing one of these sway bars! It includes sway bar, brackets, bushings and end links to replace your old, small bar.

DAA-136	1967-69 All 1"	184.99 kit
DAA-599	1967-69 All 1-1/8" HD	197.99 kit
DAA-1516-Z	1967-69* 13/16" Big Block/ Z/28....	169.95 ea.
DAA-8A	1970-81 1-1/4" (bar only).....	159.95 ea.

No Volume Discount. Ships Oversize 2.

*All with SHP engines with balancer.



DSB-5814

Rear Sway Bar Kit

This complete direct OEM replacement rear sway bar kit comes complete and ready to install with all brackets, bushings, hardware and sway bar. While not technically correct, this sway bar will fit and function as original and is excellent for street, strip, road racing and everything in between!

DSB-5814	1967-69 All 7/8" Bar	175.99 kit
DSB-6774	1967-69 All 1" Bar	181.99 kit
DSB-81	1970-81 All 1" Bar	199.99 kit

Ships Oversized. No volume discount.

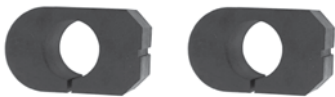


DBB-6769K

Sway Bar Bushing & Brackets Kit

Correct mounting brackets, bolts and bushings for the front sway bar.

DBB-6769K	1967-69 1" Bar	49.95 kit
MK52-KIT	1970-81 1-1/4" Bar.....	22.95 kit



DMG-683

Sway Bar Bushings

Correct bushings for the sway bar.

DHB-69	All with 1-1/16" Bars	12.95 pr.
DCI-679	13/16", 1-1/16" Bars*.....	9.95 pr.
DMG-647	13/16", 1" Bars*	12.95 pr.
DMG-683	1 1/16", 1-1/8" Bars*.....	11.95 pr.
DMG-81R	1970-81 Rear.....	13.99 pr.

*Use DBB-157 bracket.



DBB-655

DBB-656

Sway Bar Sleeve Bracket

These mount on the front sway bar next to the sway bar bracket and mount to the frame. They keep the sway bar from moving side to side.

DBB-655	1967-74 All	21.99 pr.
DBB-656	1967-74 All Bolts	6.95 set



3-5202G



Energy Suspension Sway Bar Bushings

These polyurethane body bushings offer increased performance and longevity over stock.

Add G to the part number for black. Add R to part number for red. Example. 3-5202G is for 67-69 in black.

3-5202_	1967-69 11/16" Bar.....	22.99 pr.
3-5203_	1967-69 13/16" Bar.....	22.99 pr.
9-5164_	1970-81 1-1/8" Bar.....	20.99 pr.
9-5165_	1970-81 1-1/4" Bar.....	20.99 pr.



DBB-157

DBB-81R

Sway Bar Brackets

Correct mounting brackets for the sway bar.

DBB-157	1967-81 1-1/16", 1 1/8" Bars.....	7.95 ea.
14073310	1968-81 1-1/4" Bar.....	11.95 ea.
DBB-81R	1970-81 Rear	16.99 ea.
BAR-1295	1967-81 All Bolt.....	0.75 ea.



ES-681

Stabilizer End Links

Complete kit for one car.

DSL-90	1967-81 All	14.95 kit
--------	-------------------	-----------



9-8125G

Energy Suspension Sway Bar End Links

These Polyplus sway bar end links will improve handling and steering response.

Add G to the part number for black. Add R to part number for red. Example. 3-2134G is for 67-81 in black.

9-8125_	1967-81	20.99 pr.
---------	---------------	-----------



FA-487

FA-487

Ball Joints

FA-487	1967-69 All Upper.....	22.95 ea.
FA-688	1970-81 All Upper.....	26.95 ea.
FA-993	1967-69 All Lower.....	22.95 ea.
FA-291	1970-81 All Lower.....	26.95 ea.



ES-350

Adjustment Sleeves

OEM style adjustment sleeve for proper adjustment of tie rods.

ES-350	1967-69 LH/RH.....	14.95 ea.
ES-2004	1970-81 LH/RH.....	14.95 ea.



ES-381

Outer Tie Rods

Correct OEM cast steel outer tie rods. The highest quality original style suspension products on the market! Fits LH or RH.

ES-381	1967-69.....	29.95 ea.
ES-404	1970-74	62.95 ea.
ES-441RL	1975-81	29.95 ea.



DS-829

Center Drag Links

DK-0142	1967-69 All	95.99 ea.
DS-829	1970-81 All V8 with P/S	79.95 ea.

No Volume Discount



ES-681

Inner Tie Rods

Correct OEM cast steel inner tie rods.

ES-681	1967-69 LH/RH.....	29.95 ea.
ES-781	1970-74 RH	65.00 ea.
ES-782	1970-74 LH.....	65.00 ea.
ES-442L	1975-81 LH.....	34.95 ea.
ES-443L	1975-81 RH	34.95 ea.



BPX-9873

Idler Arms

D-18718	1967-69 All	39.95 ea.
D-5212	1970-81 All	52.95 ea.
BPX-9873	Bolts.....	3.95 pr.



D-18718



UMI-2660



UMI Tie Rod Adjusters

These Camaro tie rod adjusters from UMI Performance are designed to eliminate the factory clamp style design making adjustments easy and hassle free while adding enhanced steering. CNC machined from solid mild steel hex and feature left and right hand threads for easy on-car adjustments then finished in a durable black powder coat. These tie rod adjusters work with the factory tie rod ends with no modifications.

UMI-2102	1967-69	54.99 kit
UMI-2102HD	1967-69 Heavy Duty	64.99 kit

No Volume Discount.



UMI-2660

UMI Bump Steer Adjuster Set

UMI's Camaro bump steer kit is designed to reduce or eliminate toe change during suspension travel (also known as bump steer). Reduction of bump steer improves handling and straight line stability and enhances overall precision of the steering system.



UMI-2660	1972-81	Street Black	189.99 kit
UMI-2660-1	1972-81	Race Black	189.99 kit
UMI-3060	1982-92	Street Black	189.99 kit
UMI-3060-1	1982-92	Race Black	189.99 kit
UMI-2060-1	1993-02	Race Black	289.99 kit

No volume discount.

UMI Upper & Lower Tubular A-Arms

Improve the street and track performance of your F-body and achieve that precise Pro-Touring feel by adding a set of fabricated tubular A-Arms. The stock geometry lower a-arms, which work with most popular springs and coilovers, feature tough tubular construction with greaseable polyurethane bushings for precise handling and smooth suspension motion. Optional Delrin® bushings offer additional precision and decreased friction. The ball joint mount is angled slightly from stock to permit usage with lowered vehicles and the design offers additional wheel clearance. The tubular upper a-arms feature Delrin® bushings as well as billet chromoly cross shafts. The relocated ball joint mounting pad increases caster, steering feel and stability without excessive shims and can be loaded with 1/2" taller upper ball joints to improve camber performance. The ultra tough red or black powder coat finish guarantees your performance parts stay beautiful on your street car, drag car, auto crosser or Pro-Touring machine. For the best handling and tire life from UMI designed a-arms, included with each kit are recommended alignment specs along with detailed installation instructions.

1970-1981 Control Arms

Insert color choice in ___ R = Red B = Black

Upper A-Arms w/ Delrin® Bushings

UMI-2653-__	1970-81 Standard Ball Joints	519.99 pr.
UMI-2653-1-__	1970-81 1/2" Taller Ball Joints	599.99 pr.

Upper A-Arms w/ Adjustable Bushings

UMI-2656-__	1970-81 Standard Ball Joints	519.99 pr.
UMI-2656-1-__	1970-81 1/2" Taller Ball Joints	599.99 pr.

Lower A-Arms w/ Polyurethane Bushings

UMI-2651-__	1970-81 Standard Ball Joints	629.99 pr.
-------------	------------------------------	-------	------------

Lower A-Arms w/ Delrin® Bushings

UMI-2652-__	1970-81 Standard Ball Joints	699.99 pr.
-------------	------------------------------	-------	------------

Kit: Upper A-Arms w/ Delrin® Bushings, Lower A-Arms w/ Polyurethane Bushings

UMI-265153-__	1970-81 Standard Ball Joints	1149.99 kit
---------------	------------------------------	-------	-------------

Kit: Upper A-Arms w/ Delrin® Bushings, Lower A-Arms w/ Delrin® Bushings

UMI-265253-1-__	1970-81 1/2" Taller Ball Joints	1299.99 kit
-----------------	---------------------------------	-------	-------------

Kit: Upper A-Arms w/ Adjustable Bushings, Lower A-Arms w/ Delrin® Bushings

UMI-265256-1-__	1970-81 1/2" Taller Ball Joints	1299.99 kit
-----------------	---------------------------------	-------	-------------

1982-1992 Control Arms

Insert color choice in ___ R = Red B = Black

Lower A-Arms w/ Delrin® Bushings

UMI-3032-__	1982-92 Standard Ball Joints Factory Struts	699.99 pr.
UMI-2052-__	1982-92 Standard Ball Joints Coilover Shocks	569.95 pr.

Lower A-Arms w/ Polyurethane Bushings

UMI-3031-__	1982-92 Standard Ball Joints Factory Struts	629.99 pr.
UMI-2051-__	1982-92 Standard Ball Joints Coilover Shocks	489.95 pr.

Hardware

UMI-2601	1970-81 Upper Control Arm Bolts	11.95 kit
UMI-4001	1970-74 Lower Control Arm Bolts	13.95 kit
UMI-1003	1975-81 Lower Control Arm Bolts	14.99 kit
UMI-3011	1982-92 Lower Control Arm Bolts	12.95 kit
UMI-2302	1993-02 Upper Control Arm Bolts	10.95 kit
UMI-2301	1993-02 Lower Control Arm Bolts	15.99 kit

Tall Ball Joint Option: UMI is proud to offer a number of tall ball joint options. In addition to standard height ball joints, we offer 0.5" tall uppers. Additional ball joint height functions the same as adding a taller spindle at a fraction of the cost. Drag and cruising oriented cars work fine with standard height while tall ball joints optimize cornering ability. No Volume Discount. Not eligible for free shipping.



UMI-2653-R



UMI-2651-B

1993-2002 Control Arms

Insert color choice in ___ R = Red B = Black



Upper A-Arms w/ Adjustable Bushings

UMI-2310-__	1993-02 Standard Ball Joints	409.95 kit
-------------	------------------------------	-------	------------

Upper A-Arms w/ Polyurethane Bushings

UMI-2311-__	1993-02 Standard Ball Joints	269.95 kit
-------------	------------------------------	-------	------------

Lower A-Arms w/ Adjustable Rod Ends For Drag Racing

UMI-2300-__	1993-02 Adjustable Race w/ Rod Ends	499.95 kit
UMI-2317-__	1993-02 Adjustable Race w/ Rod Ends Chromoly*	549.95 pr.

*Heavy duty material.

Lower A-Arms w/ Polyurethane Bushings

UMI-2305-__	1993-02 Non Adjustable Street w/ Rod End	499.95 kit
UMI-2306-__	1993-02 Non Adjustable Street w/ Roto-Joint	549.95 kit

Lower A-Arms w/ Delrin® Bushings

UMI-2307-__	1993-02 Non Adjustable Street w/ Rod End	529.95 kit
UMI-2308-__	1993-02 Non Adjustable Street w/ Roto-Joint	569.95 kit

Lower A-Arms w/ Roto-Joint Bushings

UMI-2304-__	1993-02 Non Adjustable Street w/ Roto-Joint Both Ends	599.95 kit
-------------	-------------------------------------------------------	-------	------------

Kit: Upper A-Arms w/ Polyurethane Bushings,

Lower A-Arms w/ Polyurethane Bushing and Rod End			
UMI-230511-__	1993-02 Standard Ball Joints	769.95 kit

Kit: Upper A-Arms w/ Polyurethane Bushings,

Lower A-Arms w/ Adjustable Rod Ends Budget Drag Race			
UMI-230011-__	1993-02 Standard Ball Joints	769.95 kit

Kit: Upper A-Arms w/ Adjustable Rod Ends, Lower A-Arms w/ Adjustable Rod Ends Drag Race

UMI-230010-__	1993-02 Standard Ball Joints	909.95 kit
---------------	------------------------------	-------	------------

*Heavy duty material.



UMI-2112-R



UMI-2245-325-R

UMI-90048

UMI Solid Sway Bars

UMI Performance solid sway bars are designed to reduce body roll, understeer and increase cornering capabilities resulting in a more balanced suspension. UMI Performance sway bars are manufactured from 4140 chrome moly steel and formed as one piece to ensure maximum strength and performance. The rear sway bar is heat treated to maintain longer memory than a cold bent sway bar. The front sway bar is CNC bent for a precision fit. Kit is available powdercoated bright red or gloss black for a durable long lasting finish.

Insert color choice in ___ R = Red B = Black

UMI-4035-__	1970-81 Front Only 1-1/4"	209.99 kit
UMI-2112-__	1982-02 Front Only 1-3/8"	229.99 kit
UMI-2245-275-__	1982-02 Rear Only 1-1/4"	429.95 kit
UMI-2245-300-__	1982-02 Rear* Only 1-1/4"	429.95 kit
UMI-2245-325-__	1982-02 Rear** Only 1-1/4"	429.95 kit
UMI-211213-__	1982-02 Front/Rear	429.99 kit
UMI-2113-__	2010-11 Rear Only 1-1/4"	199.95 kit
UMI-90048	1970-02 Billet Mounts Front Only 1-3/8" Bar	129.95 pr.

* Fits drag race cars with 3" axle tubes only. ** Fits drag race cars with 3-1/4" axle tubes only. No Volume Discount. Ships Oversize 2. Not eligible for free shipping.



UMI-2004-R

UMI Subframe Connectors

Subframe connectors improve your car's handling ability while reducing t-top squeaks, dash rattles and quarter panel flexing, designed for auto-cross, road race as well as drag race set-ups.

By connecting the front and rear subframes together this allows better weight transfer for improved traction and straighter launches. Insert color choice in ___ R = Red B = Black

2 Point Kits

UMI-2002-__	1993-02 Bolt In Tubular Coupe	239.95 pr.
UMI-2027-__	1993-02 Bolt In Tubular CVT	239.95 pr.
UMI-2001-__	1993-02 Weld In Tubular Coupe	169.95 pr.
UMI-2026-__	1993-02 Weld In Tubular CVT	239.95 pr.
UMI-2000-__	1993-02 Weld In Boxed	219.95 pr.

3 Point Kits

UMI-2004-__	1993-02 Bolt In Tubular Coupe	519.95 pr.
UMI-2044-__	1993-02 Bolt In Tubular CVT	519.95 pr.
UMI-2003-__	1993-02 Weld In Tubular Coupe	499.95 pr.
UMI-2043-__	1993-02 Weld In Tubular CVT	499.95 pr.

No Volume Discount. Ships Oversize 2. Not eligible for free shipping.



UMI-2225-B

UMI Transmission Crossmembers

These transmission crossmembers are designed to bolt a TH350 or TH400 automatic transmission into a 1993-2002 Camaro. This crossmember is 100% bolt in and requires no drilling, no cutting and no welding. It bolts in place of the factory transmission crossmember using the existing holes. Insert color choice in ___ R = Red B = Black

UMI-2225-__	1993-97 w/ TH350	169.95 ea.
UMI-2223-__	1993-97 w/ TH400	179.95 ea.
UMI-2211-__	1998-02 w/ TH350	179.95 ea.
UMI-2222-__	1998-02 w/ TH400	179.95 ea.

No Volume Discount. Ships Oversize 2. Not eligible for free shipping.



UMI-2500-R

UMI Driveshaft Tunnel Brace

The UMI heavy duty tunnel brace reinforces the tunnel area and reduces chassis flex by replacing the weak factory stamped steel brace. Reinforcement of this area is critical because of the drive shaft carrier bearing location. The UMI tunnel brace is fabricated from CNC machined 3/16" thick mounting plates, rectangular tubing and MIG welded. The tunnel brace is a 100% bolt in application and uses existing factory mounting holes. Installation requires basic hand tools and can be completed in less than a half hour.

UMI-2500-R	2010-13 Red	89.95 ea.
UMI-2500-B	2010-13 Black	89.95 ea.

No Volume Discount.

UMI Front Crossmember

The UMI Performance tubular K-Member instantly removes up to 25 lbs. from the front of your vehicle while still maintaining strength for streetability and daily use. This item has been designed to handle everything from drag racing, daily driving and even autocross. Our dual tube center section adds increased strength over the competitors' design, making this item far more superior and able to handle every day stress and abuse. Additional front end adjustment can also be achieved with this item, the lower A-Arm slots feature a 1/2 inch adjustment built in and will work with the stock and any aftermarket A-Arm set-up. The front and rear A-Arm slots also feature additional bracing to withstand hard side loads and extreme pressure. This tubular K-Member also features integrated motor mounts eliminating the stock cast iron mounts and for maximum weight savings. Combine this with a set of our lower control arms and expect a weight reduction of up to 33 lbs. Insert color choice in ___ R = Red B = Black



UMI-2325-__	1993-97 LT1 Engine Street Version	599.95 ea.
UMI-2326-__	1993-97 LT1 Engine Road Race Version	799.95 ea.
UMI-2322-__	1993-97 SBC/BBC Engine Street Version	599.95 ea.
UMI-2324-__	1993-97 SBC/BBC Road Race Version	799.95 ea.
UMI-2320-__	1998-02 LS1 Engine Street Version	599.95 ea.
UMI-2321-__	1998-02 LT1 Engine Road Race Version	799.95 ea.
UMI-2318-BARE	1993-02 No Engine Mounts Street Version	549.95 ea.
UMI-2318-__	1993-02 No Engine Mounts Street Version	569.95 ea.
UMI-2319-BARE	1993-02 No Engine Mounts Road Race Version	749.95 ea.
UMI-2319-BLACK	1993-02 No Engine Mounts Road Race Version	769.95 ea.

No Volume Discount. Ships Oversize. Not eligible for free shipping.

UMI LSX Swap Engine Mounts

UMI's LSX adapter plates bolt directly to the frame and allow the installation of any LSX engine. UMI-2406 fits factory LS engine mounts and also works with UMI-2323 solid aluminum motor mounts. UMI's LS mounts place the LS engine in the factory location with the ability to move the engine rear-ward up to 1 in. LS mounts are CNC laser cut from 3/16 in thick steel with MIG welded 1/4 in thick stand offs, high grade mounting hardware included.

UMI-2406-R	1974-92 Red LS Engine Mount	119.95 kit
UMI-2406-B	1974-92 Black LS Engine Mount	119.95 kit
UMI-2323	1998-02 LS Solid Aluminum Engine Mount	159.95 kit
UMI-2328	1998-02 LS Solid Steel Engine Mount	99.95 kit

No Volume Discount.

UMI Solid & HD Motor Mounts

UMI-90058	1974-92 SBC HD Engine Mount On Engine	39.95 pr.
UMI-90051	1974-92 SBC Solid Engine Mount On Frame	79.95 pr.
UMI-90059	1974-92 SBC Solid Engine Mount	109.95 pr.

No Volume Discount.



UMI-2406-R



UMI-90059



UMI-2005-B

UMI Strut Tower Brace

The UMI Performance shock tower brace positively connects the front right and left shock towers together for firm handling and improved steering response. The shock tower brace is constructed of DOM mild steel tubing 1.250 inch OD x 0.095 inch wall using CNC machined 0.250 inch thick mounting plates.

UMI-2005-R	1993-02 Red Mild Steel.....	79.95 ea.
UMI-2005-B	1993-02 Black Mild Steel	79.95 ea.
UMI-2006-R	1993-02 Red Chromoly Steel*.....	149.95 ea.
UMI-2006-B	1993-02 Black Chromoly Steel*.....	149.95 ea.

*Chromoly Steel Tubing shock tower braces are constructed of 1.250 inch x 0.083 inch 4130. No Volume Discount. Ships Oversize. Not eligible for free shipping.



UMI Street Performance Mono-tube Shocks

The UMI Performance monotube rear shock is designed to bridge the gap between basic street shocks and aggressive racing shocks. Medium-firm compression valving provides crisp handling and absorbs bumps while still providing a comfortable ride.

UMI-S120	1970-81 Front Shock Non Adj*	139.99 ea.
UMI-S121	1970-81 Front Shock 20 Step Adj..	239.99 ea.
UMI-S140	1970-81 Rear Shock Non Adj	139.99 ea.
UMI-S42040	1970-81 Front & Rear Kit.....	549.99 kit

*These shocks are designed to work with aftermarket tubular control arms only. No Volume Discount.



UMI-S140

UMI-S121



UMI-8741-1030SPORT



UMI-8250-1005



Koni Shocks & Kits

Koni "Yellow" sport struts and shocks are widely considered to be the best standard mount bolt-on shock for corner carving. This Koni SPORT kit is a direct replacement for the worn factory shocks on your Camaro. Koni Yellows feature excellent handling combined with a sport oriented, corner carver worthy feeling. Yellow shocks and struts are on car adjustable unless otherwise noted.

Koni "Orange" STR-T shocks are considered to be a great choice for handling on a budget mount bolt-on shock for corner carving. This Koni STR-T shock kit is a direct replacement for the worn factory shocks on your Camaro. Koni Orange shocks feature excellent handling combined with a smooth ride on the street. Orange shocks are non-adjustable.

Shocks & Struts Only

UMI-8741-1030SPORT	1982-92 Front Yellow	261.95 ea.
UMI-30-1265SPORT	1982-02 Rear* Yellow	119.95 ea.
UMI-207301	1982-92 Front/Rear Yellow.....	859.99 kit
UMI-207302	1982-92 Front/Rear* Yellow.....	759.95 kit
UMI-207401	1993-02 Front/Rear Yellow.....	957.95 kit
UMI-8241-1139SPORT	1993-02 Front Yellow	309.95 ea.
UMI-8241-1140SPORT	1993-02 Rear Yellow	169.95 ea.
UMI-8250-1005	1993-02 Front Orange	88.95 ea.
UMI-8250-1006	1993-02 Rear Orange	82.95 ea.

Shock Strut & Drop Spring Kits

UMI-207306	1982-92 Front/Rear* Yellow.....	1019.95 kit
UMI-207305	1982-92 Front/Rear Yellow	1089.95 kit
UMI-2061SPORT	1993-02 Front/Rear Yellow.....	1197.99 kit
UMI-2061STRT	1993-02 Front/Rear Orange	579.95 kit

*Rear shock must be removed for adjustment.



UMI-2048-300

UMI Front Coilover Shock Kits

UMI's Camaro front coilover kit permits installation of a true 2-1/2 inch racing coilover spring and shock into your 1993-2002 Camaro. Factory style lower t-bar fits factory GM, UMI and most other brands of lower arms intended for stock t-bar.

UMI-2048-300	1993-02 300 lbs Springs 2X Adj....	749.99 kit
UMI-2048-350	1993-02 350 lbs Springs 2X Adj....	749.99 kit
UMI-2048-450	1993-02 450 lbs Springs 2X Adj....	749.99 kit
UMI-2048-550	1993-02 550 lbs Springs 2X Adj....	749.99 kit
UMI-2053-600T	1993-02 600 lbs Springs 1X Adj..	1039.99 kit

No Volume Discount.



UMI-2046-110

UMI Rear Coilover Shock Kits

UMI's bolt-in rear coilover kit allows full ride height, spring rate and damping adjustability for your 1982-2002 Camaro. The double shear upper mount is a direct bolt-in and holds a true 2-1/2 inch racing coilover. The FEA designed lower bracket bolts in using the standard shock mounting hole as well as an additional reinforcement hole.

UMI-2046-110	1982-02 110 lbs Springs 2X Adj....	729.99 kit
UMI-2046-125	1982-02 125 lbs Springs 2X Adj.....	729.99 kit
UMI-2046-150	1982-02 150 lbs Springs 2X Adj.....	729.99 kit
UMI-2054-200	1982-02 200 lbs Springs 1X Adj...	1039.99 kit

No Volume Discount.



UMI-20-600200T

UMI Competition Coilover Shock Kit Complete

UMI's 4th Gen Camaro competition coilover package is built to perform. Developed in conjunction with Sam Strano (14x national SCCA auto-x champion), the Afco built monotube dampers provide race winning performance in auto-x and road race while still providing an awesome street ride.

UMI-20-600200T	1993-02	2079.99 kit
UMI-2045	1982-02 Rear Hardware*.....	199.99 kit
UMI-2057	1982-02 Spanner Wrench	19.95 ea.

*Mounting Hardware Only

No Volume Discount. Ships Oversize. Not eligible for free shipping.



UMI Rear Control Arms

UMI's heavy duty control arms are direct replacements of the weak, factory stamped rear lower control arms. UMI's control arms are constructed of mild steel tubing with CNC machined ends. These direct bolt-on replacements are designed to minimize wheel hop and improve cornering, while lowering track ETs and helping track consistency. Control arms come complete with bushings, grease fittings when applicable, zinc-plated steel sleeves and finished in a gloss powder coat. Insert color choice in ___ R = Red B = Black

Non-Adjustable Lower

UMI-2015-__	1982-02 Poly Bushings	89.95 pr.
UMI-2033-__	1982-02 Poly Bushing/RotoJoint	219.95 pr.
UMI-2033-__	1982-02 RotoJoint/RotoJoint	219.95 pr.

Adjustable Lower One End Only

UMI-2018-__	1982-02 Poly Bushings	219.95 pr.
UMI-2016-__	1982-02 Poly Bushing/Rod End HD Chromoly	189.95 pr.
UMI-2013-__	1982-02 Poly Bushing/Rod End Street	249.95 pr.
UMI-2039-__	1982-02 Poly Bushing/RotoJoint	269.95 pr.

Adjustable Lower Both Ends

UMI-2017-__	1982-02 Rod End/Rod End	249.95 pr.
UMI-2017CM-__	1982-02 Rod End/Rod End HD Chromoly	289.95 pr.
UMI-2017OF-__	1982-02 Offset Rod End/Rod End	249.95 pr.
UMI-2017OFCM-__	1982-02 Offset Rod End/Rod End HD Chromoly	289.95 pr.
UMI-OFFSET	1982-02 Offset Rod End Spacers Only	24.95 set
UMI-3007	Angle Finder Tool	10.95 ea.

No Volume Discount. Ships Oversize. Not eligible for free shipping.



UMI Rear Toe Rods

The rear toe rods control the camber alignment of the rear end preventing the tire from moving inward or outward during suspension load. The factory toe rods are made from flimsy stamped steel and feature soft rubber bushings causing deflection which leads to erratic handling, poor traction and possible rear tire wear. Replacing the factory arms with heavy duty toe rods makes for a more stable suspension, improved traction and better braking. Insert color choice in ___ R = Red B = Black

Non-Adjustable 2 Piece Kit

UMI-2520-__	2010-14 Poly Bushings Boxed	129.95 pr.
UMI-2521-__	2010-14 RotoJoint Bushings Boxed	229.95 pr.

Non-Adjustable With Trailing Arms 4 Piece Kit

UMI-201520-__	2010-14 Poly Bushings Boxed	169.95 kit
---------------	-----------------------------------	------------

Adjustable 2 Piece Kit

UMI-2523-__	2010-14 Poly Bushings Tubular	229.95 pr.
UMI-2522-__	2010-14 Rod End Bushings Tubular Cromoly	249.95 pr.
UMI-2524-__	2010-14 RotoJoint Bushings Tubular Cromoly	299.95 pr.
UMI-2518	2010-14 Anti-Eccentric Washers 4pc	12.95 kit

No Volume Discount.



UMI Torque Arms & Kits

Track abuse, street abuse or just flat-out abuse, this torque arm is designed to handle it all! Eliminate unwanted traction problems by adding a UMI Performance tunnel brace mounted torque arm. This aftermarket torque arm replaces the flimsy factory torque arm while adding strength, rigidity and eliminating suspension flex. Insert color choice in ___ R = Red B = Black

Tunnel Brace Mounted Kits

UMI-2202-__	1993-02 w/ Long Tube Headers	469.95 kit
UMI-2200-__	1993-02 w/ Factory Manifolds	449.99 kit

Tunnel Brace Mounted Kits With Drive Shaft loop

UMI-2203-__	1993-02 w/ Long Tube Headers	499.95 kit
UMI-2201-__	1993-02 w/ Factory Manifolds	479.99 kit

Weld In Kits With Crossmember

UMI-2235-__	1993-02 w/ Dipped Crossmember	479.95 kit
UMI-2236-__	1993-02 w/ Straight Crossmember	479.95 kit

No Volume Discount. Ships Oversize 2. Not eligible for free shipping.



UMI Torque Arm Relocations Kits

Installing a TH350 or TH400 Automatic transmission into your 1993-1997 Camaro just got easier. This crossmember with integrated torque arm mount features the correct provisions for mounting the transmission while still allowing the use of a factory style torque arm. The built in torque arm mount will work with virtually any stock style aftermarket torque arm as well as the factory torque arm and features instant center adjustment by moving the front of the torque arm up or down. Insert color choice in ___ R = Red B = Black

UMI-2226-__	1993-97 w/ TH350	259.95 kit
UMI-2224-__	1993-97 w/ TH400	259.95 kit
UMI-2208-__	1998-02 w/ Factory Auto	259.95 kit
UMI-2207-__	1998-02 w/ Factory Manual	259.95 kit
UMI-2212-__	1998-02 w/ TH350	259.95 kit
UMI-2213-__	1998-02 w/ TH400	259.95 kit

No Volume Discount. Ships Oversize 2. Not eligible for free shipping.



UMI Driveshaft Safety Loop

This NHRA legal driveshaft safety loop is a bolt-in application for the 1993-2002 Camaro. This item bolts to existing floor pan holes to replace of the factory tunnel brace and requires no welding. This is a must for tracks that require a safety loop for cars running faster than 13.99 in the quarter mile. The loop is constructed of 0.250 inch thick mild steel with CNC machined mounting points for a superb fit. Driveshaft safety loop includes new hardware and installs in 30 minutes using basic hand tools. Driveshaft loop will not work with UMI tunnel mounted torque arms or similar tunnel mounted torque arms. It will clear with the stock torque arm, UMI transmission mounted torque arms and most aftermarket torque arms bolting into the factory location. Insert color choice in ___ R = Red B = Black

UMI-2240-__	1993-02 All	119.99 ea.
-------------	-------------------	------------

No Volume Discount.



UMI-2019-R

UMI Rear Panhard Bar

UMI's tubular panhard bar kits are a direct replacement for the flimsy stock stamped panhard bar. They add strength as well as bushing improvement. The panhard bar greatly increases rear stability, controls side movement and body flex; a must when hard driving habits are present.

Insert color choice in ___ R = Red B = Black

Non-Adjustable

UMI-2020-__	1982-02 Poly Bushings	79.95 kit
-------------	-----------------------------	-----------

Adjustable

UMI-2019-__	1982-02 Single Adjustable Poly Bushing/Poly Bushing.....	109.95 kit
UMI-2021-__	1982-02 Single Adjustable Poly Bushing/Rod Ends	109.95 kit
UMI-2036-__	1982-02 Single Adjustable Poly Bushing/RotoJoint Ends	129.95 kit
UMI-2038-__	1982-02 Double Adjustable RotoJoint/RotoJoint Ends	199.95 kit
UMI-2037-__	1982-02 Double Adjustable RotoJoint/RotoJoint Ends.....	169.95 kit

Adjustable On The Car

UMI-2029-__	1982-02 Single Adjustable Poly Bushing/Poly Bushing.....	129.95 kit
UMI-2022-__	1982-02 Double Adjustable Poly Bushing/Rod Ends	149.95 kit
UMI-2023-__	1982-02 Double Adjustable Rod Ends / Rod Ends Ends.....	159.95 kit
UMI-2037-__	1982-02 Double Adjustable RotoJoint/RotoJoint Ends	169.95 kit

Relocation Kit 2 Piece

UMI-2024-__	1982-02	179.95 kit
-------------	---------------	------------

No Volume Discount. Ships Oversize. Not eligible for free shipping.



UMI-2080-275-B



1982-02 Watts Link Kits

The UMI Watts Link is designed as a key component to optimize the 3rd and 4th generation Camaro solid axle rear suspension. The combination of lateral locating ability and roll center height adjustment makes a Watts Link the best choice for axle location in handling cars. Clears up to 5" exhaust.

Kits For Factory Rear Ends

UMI-2080-275-B	1982-02 Black.....	799.95 ea.
UMI-2080-275-R	1982-02 Red.....	799.95 ea.

Kits For Rear Ends With 3" Axle Tubes

UMI-2080-300-B	1982-02 Black.....	799.95 ea.
UMI-2080-300-R	1982-02 Red.....	799.95 ea.

No Volume discount.

STEERING PARTS & ACCESSORIES

NO CORE CHARGE



GBK-1A

Power Steering Gearbox Kits

Now you can add one of these awesome "close ratio" gear boxes to your conversion. These boxes are original re-manufactured GM units and will add the ultimate handling to your ride. Our kit comes with steering box, GM steering coupler (rag joint) and correct attaching bolts. Choose from fast ratio or super fast ratio! No core charge!

1967-69 Camaro

GBK-1F	3 - 3.5 Fast.....	290.49 kit
GBK-1SFF	2.5 Super Fast	316.03 kit

1970-76 Camaro

GBK-1A	3 - 3.5 Fast.....	298.24 kit
GBK-1SFA	2.5 Super Fast	323.78 kit

No volume discount. Ships UPS Oversize.

Steering Coupler Bolt

Correct OEM bolt for coupler.

ATJ-411	1967-76 All	5.99 ea.
---------	-------------------	----------



ATJ-411

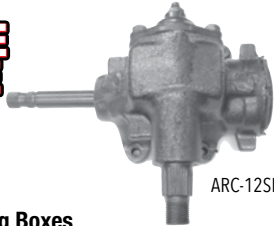
BSB-759

Steering Box Bolt

Complete with correct thick washer and bolt.

BSB-757	1967-69 All	3.95 ea.
BSB-759	1970-76 All	6.99 ea.

NO CORE CHARGE



ARC-12SF

Manual Steering Boxes

Complete remanufactured original Saginaw assemblies. Choose from standard or quick ratio. No core charge.

ARC-12A	1967-69 24:1 Std	289.95 ea.
ARC-12B	1970-76 24:1 Std	289.95 ea.
ARC-12SF	1967-76 16:1 Quick	309.95 ea.

Note: Use ATE-8869B coupler with ARC-12SF.

No volume discount. Ships UPS Oversize.

D-1870



Pitman Arm

OEM pitman arm.

Manual Steering

DA-985	1967-69	75.95 ea.
DA-138Z	1967-69 Z/28 Fast Ratio.....	169.95 ea.
DA-811	1970-81	89.95 ea.

Power Steering

D-1870	1967-69	69.95 ea.
DA-711	1970-81	109.99 ea.

Pitman Arm Nut

Correct nut with washer.

BX-64K	1967-81 w/ Power.....	6.95 ea.
--------	-----------------------	----------



BX-64K

ES-48DB

Tie Rod Dust Boots

Correct tie rod end dust boots.

Approx. 1-3/16" on bottom and 1-1/4" on top with a 1/2" hole.

ES-48DB	1967-92 4pc	23.95 kit
---------	-------------------	-----------



IIS-70F

IIS-78

IIS-78S

Intermediate Steering Shaft

Restore proper steering stability and safety with this newly remanufactured intermediate steering shaft. This shaft goes from the steering column down to the steering box and wears out over time, causing sloppy steering feel.

IIS-70F	1970-76 All	205.95 ea.
IIS-78	1978-92 All w/o Shroud.....	119.95 ea.
IIS-78S	1978-92 All w/ Shroud.....	139.95 ea.



ATE-8869B

ATE-8871

ATE-8869A

Steering Coupler

Complete joint for connecting column to box. 1967-69 with manual steering features fine spline and 1970-76 with manual steering features coarse spline.

ATE-8869A	1967-69 Manual.....	49.95 ea.
ATE-8869B	1970-76 Manual.....	49.95 ea.
ATE-8871	1967-76 Power	49.95 ea.

STEERING *continued*



SALE

**Concourse Series
"Banjo" Style Power
Steering Pumps**

These are brand new banjo style power steering pumps with correct reservoir and inlet and outlet fittings. No Core Charge.

APS-6086	1967-68 All V8	175.95 ea.
APS-6153	1969 SB	179.95 ea.
APS-6151	1969 BB	179.95 ea.
APS-6165	1970-72 All V8*	179.95 ea.

*Use with 1970 hose & brackets. No Volume Discounts.

NO CORE CHARGE

**Power Steering Pumps -
Replacement**

Completely rebuilt second design power steering pumps. These pumps will differ in appearance from our originals, but will fit and function the same.

No core charge!

APS-6000R	1969-72 All	99.95 ea.
-----------	-------------------	-----------

No volume discount



TUF-6183B



TUF-6195A

Tuff Stuff Power Steering Pumps

GM Saginaw style pumps feature all new components reservoir, pump assembly, cap & dipstick and hardware when it applies. Rated at 1200 psi, rated to work with most gearbox systems.

TUF-6197A	1967-68 SB Chrome Banjo Style	235.99 ea.
TUF-6197B	1967-68 SB Black Banjo Style	186.99 ea.
TUF-6195A	1969 BB Chrome Banjo Style	235.99 ea.
TUF-6195B	1969 BB Black Banjo Style	186.99 ea.
TUF-6193A	1970 All Chrome Banjo Style	235.99 ea.
TUF-6193B	1970 All Black Banjo Style	186.99 ea.
TUF-6182A	1970-74 All Chrome	221.99 ea.
TUF-6182B	1970-74 All Black	174.99 ea.
TUF-6181A	1975-78 All Chrome	221.99 ea.
TUF-6181B	1975-78 All Black	174.99 ea.
TUF-6181A	1979 All Chrome	221.99 ea.
TUF-6181B	1979 All Black	174.99 ea.
TUF-6180A	1980-81 All Chrome	221.99 ea.
TUF-6180B	1980-81 All Black	174.99 ea.
TUF-6179A	1982-87 All Chrome	221.99 ea.
TUF-6179B	1982-87 All Black	174.99 ea.
TUF-6184A	1988-92 All Chrome	221.99 ea.
TUF-6184B	1988-92 All Black	174.99 ea.
TUF-5559	All Inline Filter	32.99 ea.

No volume discount.



Power Steering Pump Cap

Quality replacement power steering pump cap.

ADR-077	1967-81 All	8.95 ea.
---------	-------------------	----------

OE Power Steering Pump Cap

OE style reproduction metal cap.

APC-42	Metal Cap	19.95 ea.
--------	-----------------	-----------

Power Steering OEM High Pressure Hose

New correctly bent OEM high pressure hoses with correct fittings.

OEM



CPX-6616	1967-68 All V8	26.95 ea.
----------	----------------------	-----------



CPX-6602	1969 All V8	26.95 ea.
----------	-------------------	-----------



CPX-6618	1970-72 Big Block	26.95 ea.
----------	-------------------------	-----------



CPX-263	1970-72 SB (All V8 73-76)	26.95 ea.
CPX-277	1977-79 All V8	26.95 ea.



CPX-634	1980-81 All V8	26.95 ea.
---------	----------------------	-----------

BUY'N SAVE WITH KITS



ARK-678F



Power Steering Hose Kits

This kit comes with OEM high pressure hose, low pressure return tube, hose and correct clamps

ARK-678F	1967-68 All V8	38.17 kit
ARK-69F	1969 All V8	39.96 kit
ARK-70F	1970-72 V8	39.96 kit

No Volume Discount



NPX-16

Power Steering Return Hose

Complete with correct pre bent flared tube, OEM hose and correct clamps.

NPX-16	1967-76 All V8	17.95 kit
CPS-038	OEM Return Hose	2.95 per ft
CPN-512	OEM Clamps Screw Type	1.95 ea.



AFP-513

Power Steering Pump Fitting

OE style reproduction of the very difficult to find power steering pump fitting which is usually missing on remanufactured pumps.

AFP-513	1969 All	34.95 ea.
---------	----------------	-----------



ASC-128

Power Steering Hose Retaining Clip

Correct clip for retaining hose to steering box.

ASC-128	All V8	12.95 ea.
---------	--------------	-----------



AB-31F

Power Steering Hose Retainer

This often missing retainer secures the two steering hoses to the frame.

AB-31F	1967-69 All V8	20.95 ea.
--------	----------------------	-----------



ADP-61

1967-68 396 Driver Pulley

OE style reproduction of the 1967-68 SS396 only power steering driver pulley.

ADP-61 1967-68 BB Driver44.95 ea.



ASP-509



23-28

Power Steering Pump Pulleys

OE style reproduction power steering pulleys.

ASP-3847 1967-69 1 Groove Deep Cast 302, 396/375, 427155.95 ea.
 ASP-509 1967-81 1 Groove36.95 ea.
 ASP-107 1969-81 2 Groove w/ AC44.99 ea.
 ASP-1395 1969-81 1 Groove SHP49.99 ea.
 23-28 Pulley Nut3.95 ea.

Power Steering Brackets

Original style reproduction and original GM brackets



ASB-366

ASB-366 1967-68 SB Cradle49.95 ea.
 For use with short water pump.



ASB-383

ASB-383 1967-68 Z/28 / SS35039.95 kit
 For use with short water pump.



ASB-184

ASB-184 1967-68 SS396 Cradle64.99 ea.
 For use with short water pump.



ASB-186

ASB-186 1967-68 396 Adjuster39.99 ea.
 For use with short water pump.



AQW-1418

AQW-1418 1969 All BB (3 piece)64.99 kit
 Works with original long water pump & P/S pump.



ASB-3941

ASB-3941 1969-76 All SB Cradle25.95 ea.
 For use with long water pump.



ASB-874

ASB-874 1969-72 SB Rear Support35.95 ea.
 For use with long water pump.



AAB-2610

AAB-2610 1969-76 SB Adjuster35.95 ea.
 For use with long water pump.



ASB-422

ASB-422 1970-72 All BB Cradle32.95 ea.
 For use with long water pump.



ASB-931

ASB-931 1970-81 All BB (adjuster)24.95 ea.
 For use with long water pump.



BSB-671

Power Steering Hardware Kits

Our kits feature all correct hardware to attach power steering brackets to engine. A MUST!

G-4804 1967 SB 302,35015.99 kit
 G-4805 1967 BB 39615.99 kit
 G-4917 1968 SB 302,35015.99 kit
 G-4918 1968 BB 39615.99 kit
 G-4805 1967 BB 39615.99 kit
 BSB-69SB 1969-74 SB All11.99 kit
 BSB-1969 1969 All BB17.99 kit
 BSB-1970 1970+ All BB12.95 kit



ASB-7KIT

1969-81 Big Block

Power Steering Bracket Kit

Complete kit with cradle, adjustment brackets and hardware.

ASB-7KIT 1969-81 All BB63.77 kit
 Will work on most BB engines with 1969 and up style long pump. May need some modification.



ASB-9KIT

1969-72 Small Block

Power Steering Bracket Kit

Complete kit with all three brackets.

ASB-9KIT 1969-72 SB88.07 kit
 Will work on most SB engines with 1969 and up style long pump. May need some modification.

BUY 'N SAVE
 WITH KITS